

# Secure eResearch Platform to support research during COVID-19

Mr. Mat Ishac, Mr. Jerico Revote, Ms. Komathy Padmanabhan, Prof. Belinda Gabbe, Mr. Chris Mac Manus, Ms Anitha Kannan  
eResearch Australasia Conference 2020

## SUMMARY

Monash SeRP is a secure research platform that enables the storage, analysis and sharing of research data, in a well governed environment.

## MONASH SERP

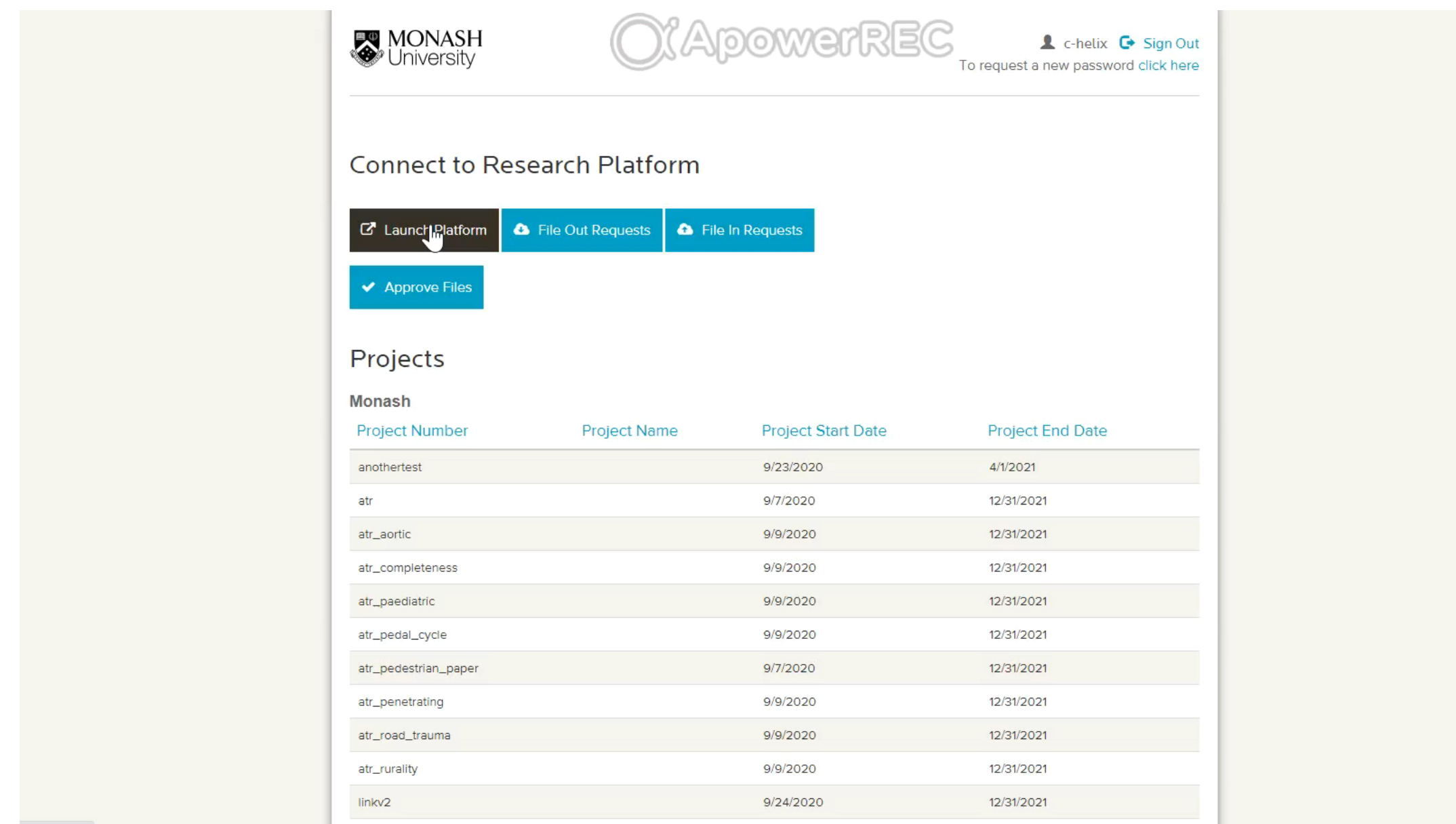
The Secure eResearch Platform (SeRP) has been developed by Swansea University and is the gold standard for managing, sharing and collaborating over sensitive data. Monash has collaborated with Swansea University to adapt SeRP for the Australian context and this is being operated as Monash SeRP.

Prof Belinda Gabbe has been an early adopter of Monash SeRP through three key research projects; the NHMRC funded VIBES-Junior study, population linkage of state-based trauma datasets, and an international benchmarking study of trauma outcomes. Each of these projects has had critical reporting deadlines to key funders and stakeholders.

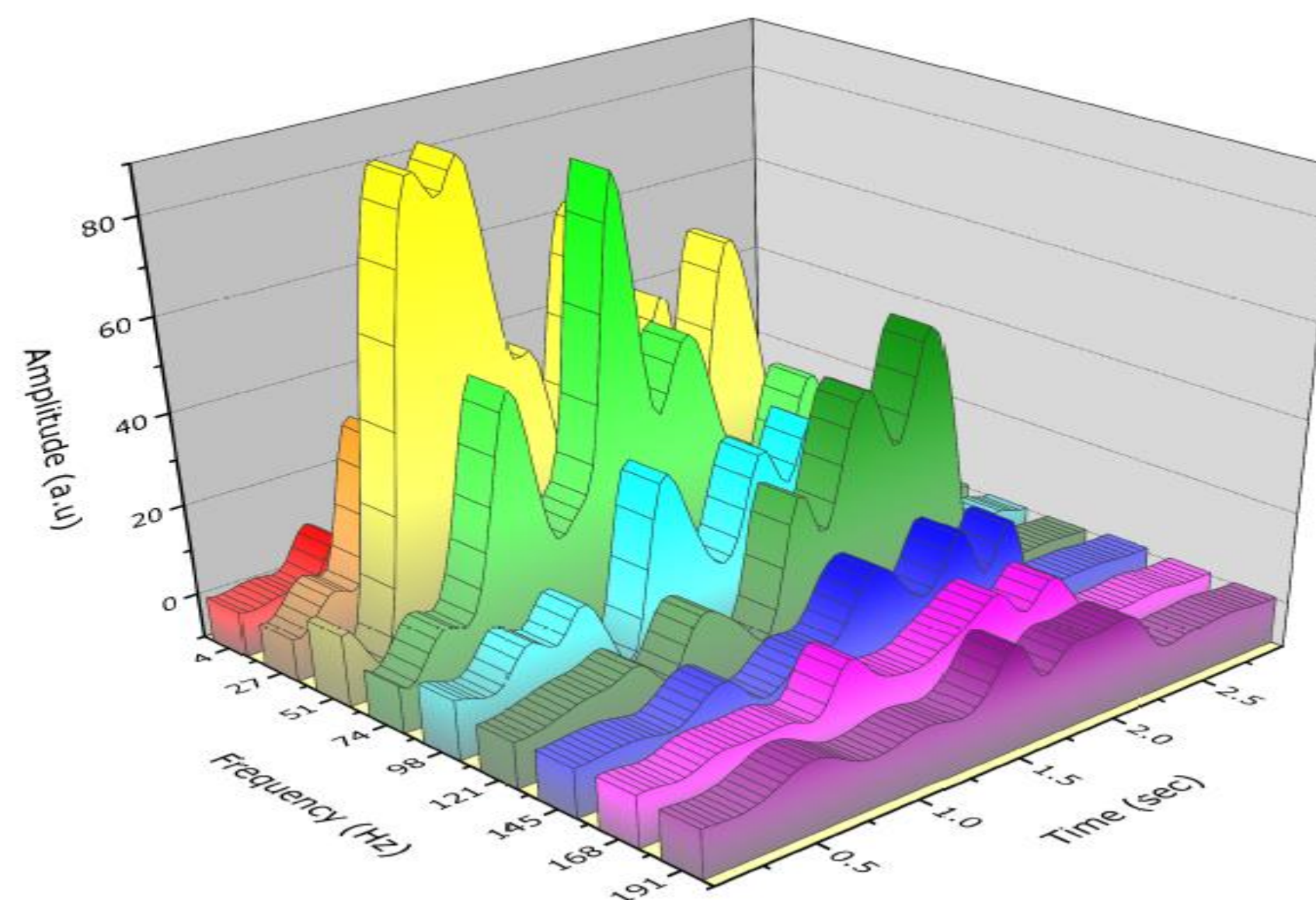
The availability of Monash SeRP and other remote tools for collaboration have ensured research continuity during the COVID-19 pandemic. The availability of this platform has provided access to high capacity computing for complex analytics by multiple analysts in Australia and internationally, with exceptional security and data custodian controls. Monash SeRP has accelerated analysis of complex data, and collaboration between analysts in a timeframe that would not otherwise have been possible.

Monash SeRP has been approved for hosting de-identified data and certification for hosting identified and re-identifiable data is in progress. It is envisaged that Monash SeRP will support a significant proportion of research at Monash University that requires secure collaboration environments for sensitive data-based research.

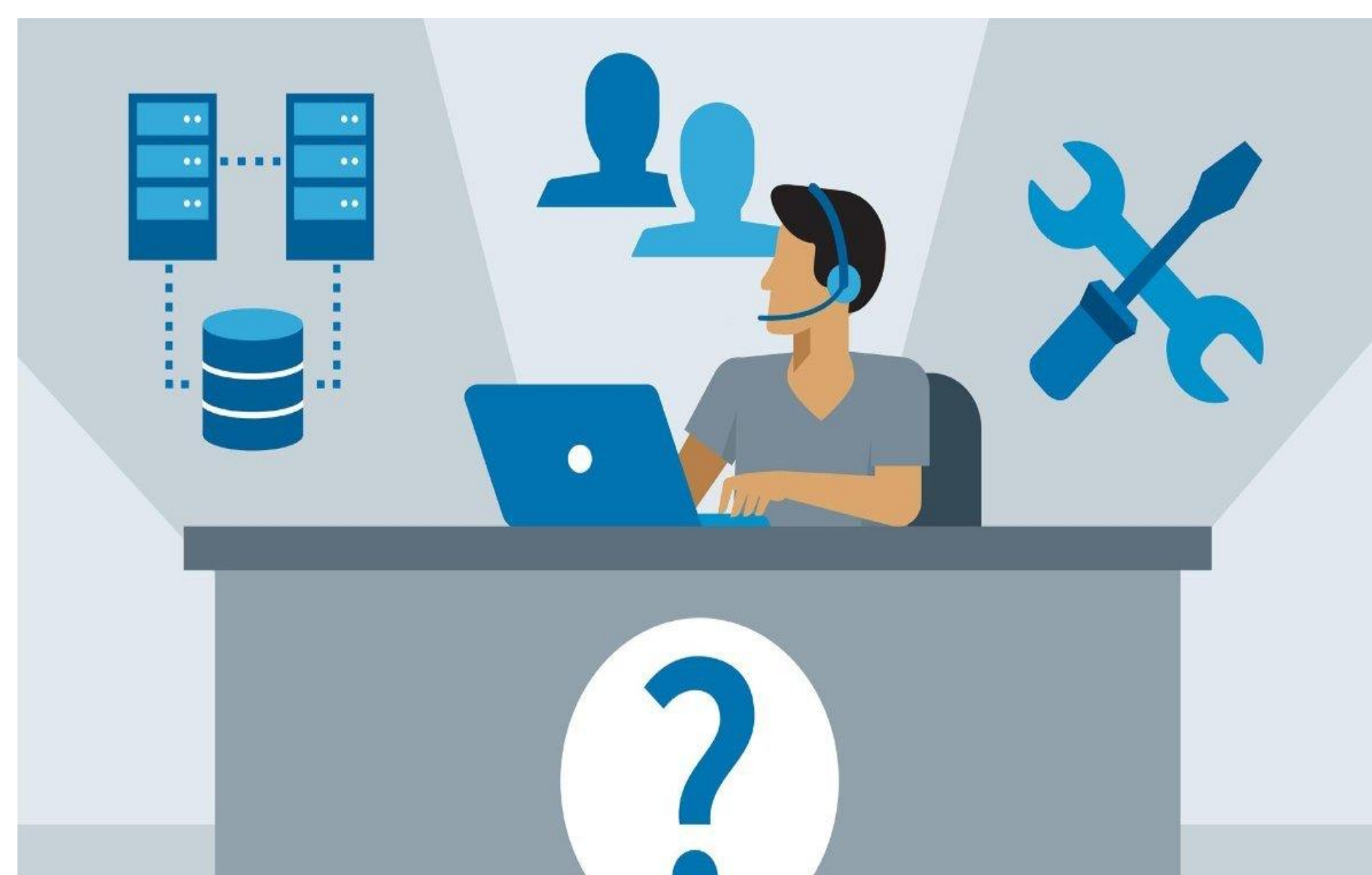
## Simple user interface to manage projects and users



## Large-scale, high performance computing



## Full suite of analytical tools



## Help Desk Portal Knowledge Base User Guides Frequently Asked Questions

For safe use of controlled data, Monash SeRP uses the 'Five Safes' framework



Current version is suitable for secure sharing of de-identified data

Secure remote access anywhere in the world



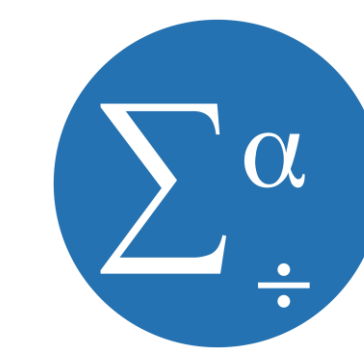
400+ users across 25 projects



Data Custodian access and permission control



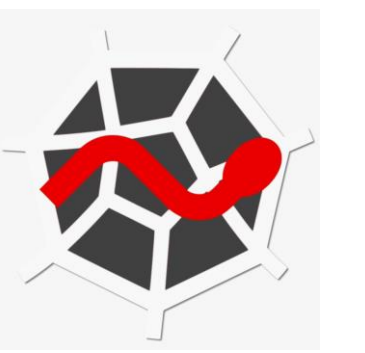
## AVAILABLE APPLICATIONS



SPSS



STATA



SPYDER



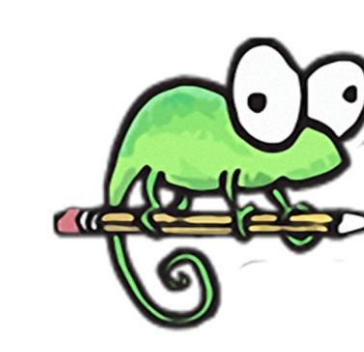
R STUDIO



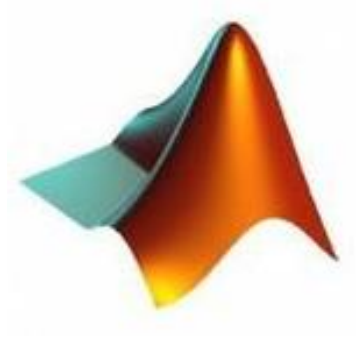
SAS



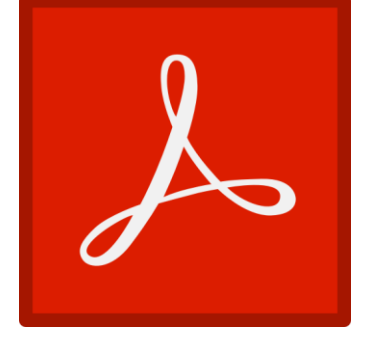
ANACONDA



NOTEPAD++



MATLAB



ADOBE READER



WORD



EXCEL



POWERPOINT



MONASH University