

CILogon 2.0

An Integrated Identity and Access Management Platform
for Science

Scott Koranda

skoranda@sphericalcowgroup.com

eResearch Oct 2018



Identity and Access Management Built on Federated Identity

Higher Education and Research Community has been building a scalable, robust, and ubiquitous federated identity infrastructure to support research and scholarship for close to 20 years.





Collaboration management platform built for federated identity

Provides:

- enrollment flows
- group/role management
- expiration policies
- self service permissions
- provisioning
- user lifecycle management
- attribute management
- identifier management
- token management
- authorization




Collaboration management platform built for federated identity

- ❑ OpenSource
- ❑ Internet2/InCommon
- ❑ PHP
- ❑ Version 3.1.1
- ❑ 20+ deployments managing more than 50K federated identities

CManage

☰ About CManage 🔍 0 🔔 ▾ Scott Koranda 👤 ▾

Medium Energy Synchrotron



- 👤 People <
- 👥 Groups <
- 📅 Departments
- ✉ Email Lists
- 📅 Jobs
- 🔧 Configuration
- ⚙ Platform <
- 👤 Collaborations

Home > Medium Energy Synchrotron > My Population

Medium Energy Synchrotron People

Toggle All: [Open](#) [Closed](#) Sort By: ▲ [Name](#) [Status](#) [Created](#) [Modified](#)

🔍 Filter ▾

a b c d e f g h i j k l m n o p q r s t u v w x y z 🔍

▶ Ernst Karl Abbe (eka@uofjena.edu)	Active	Edit
▶ Antonio Abetti (antonio.abetti@myvo.org)	Active	Edit
▶ John Couch Adams (john.adams@myvo.org)	Active	Edit
▶ Robert Grant Aitken (robert.aitken@myvo.org)	Active	Edit
▶ Samual King Alison (samual.alison@myvo.org)	Active	Edit
▶ Jean Sylvain Bailly (bailey@something.edu)	Active	Edit
▶ Chistophorus Buys Ballot	Active	Edit

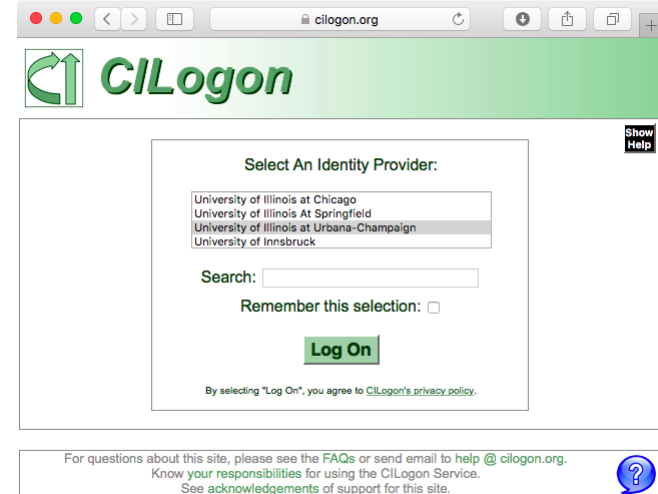
Great.

But it's still IAM infrastructure.

What if I don't want to run IAM
infrastructure?

CILogon - Launched Sep 2010

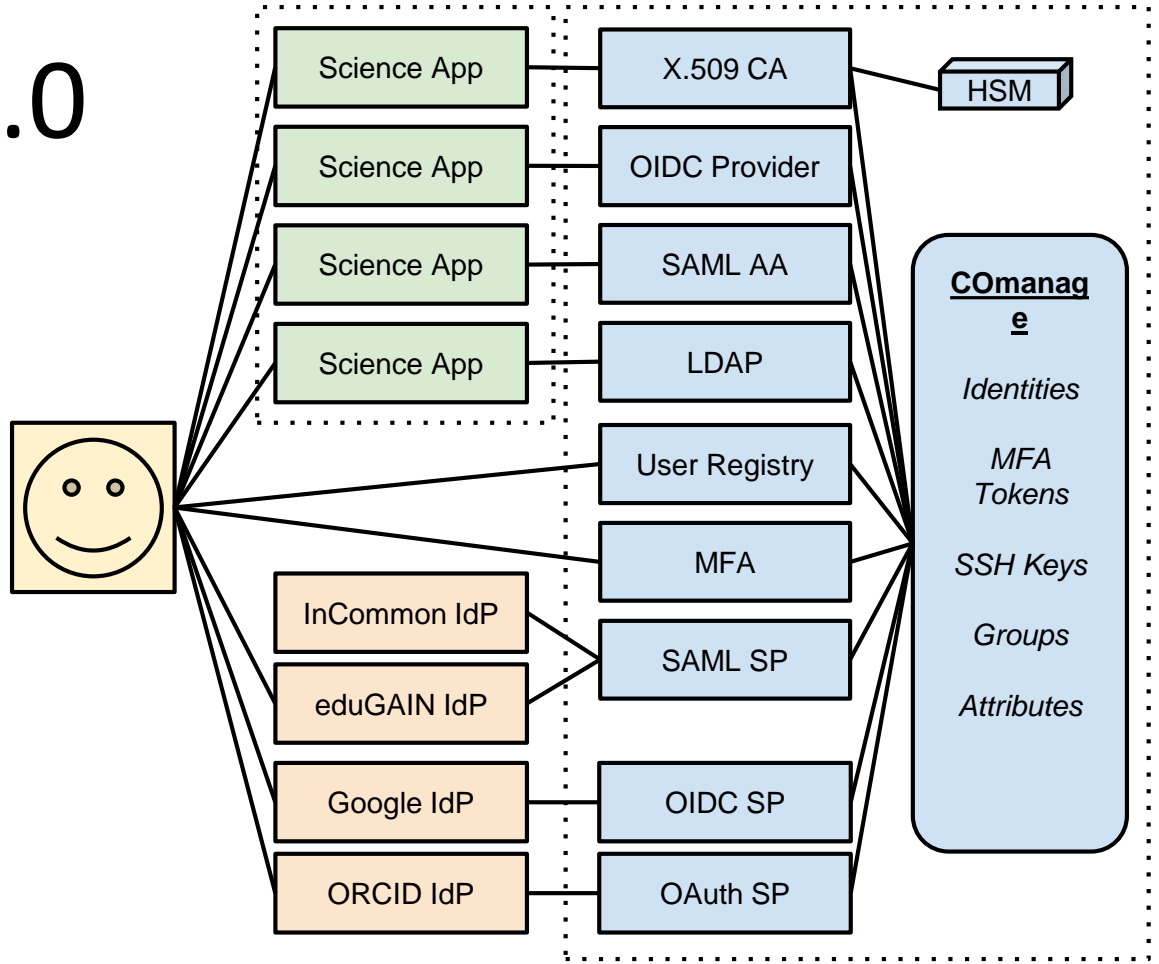
- ❑ Use federated identities to access services
- ❑ Translates across federations and protocols
 - ❑ Initially x509
 - ❑ Today OpenID Connect
- ❑ Hosted/Cloud service



CILogon 2.0

CILogon:
federated identity
management

COmanage:
collaborative
organization
management



Support for International IdPs



Show Help

Select An Identity Provider:

CTI "Diophantus"
CTI - Centro de Tecnologia da Informacao Renato Arche
CUNY Graduate Center
Curtin University

Search:

Remember this selection:

Log On

By selecting "Log On", you agree to [CILogon's privacy policy](#).

For questions about this site, please see the [FAQs](#) or send email to help@cilogon.org.
Know your responsibilities for using the CILogon Service.
See acknowledgements of support for this site.



CILogon Sustainability

- **Non-profit** subscription model administered by University of Illinois and NCSA
 - Supports long-term sustainability
 - Provides contracted SLAs
- CILogon remains **open source** and focused on **research & scholarship** needs

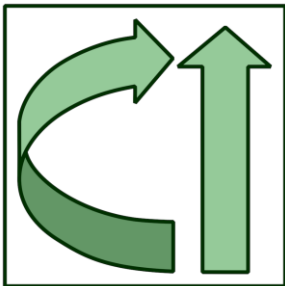


CILogon Subscription Model

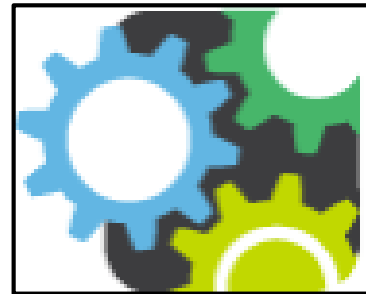
Service Tier	Service Rate
Basic Authentication Services	No charge
Basic Multi-tenant Collaboration Management Services	\$1,200 per year
Full Service Production	\$20,000 per year
Custom Support	Contact us

contact info@cilogon.org

visit www.cilogon.org/subscribe



Thanks!



Interested in using CILogon?

Contact: info@cilogon.org

