



# Turning research data management projects into business as usual for improved data management across the enterprise: the La Trobe experience

Eva Fisch, Manager Research, Library  
Rachel Salby, Acting Senior Coordinator Research Data  
Andrew Williams, Manager Research Data, University of Adelaide

Thursday 18<sup>th</sup> October 2018

# The Enterprise Research Data Management System (ERDMS) Project


- enable La Trobe University researchers to better manage research data
- Improve the management and tracking of research, enable easier collaboration, reduce use of insecure and inappropriate systems and provide a more managed environment
- a comprehensive discovery phase identifying researchers' requirements
- Trial of niche systems like EMu, HubZero, Degust

# ERDMS Project continued....

- Implementation of
  - a Research Data Management Planning Tool
  - Figshare, [researchdata.latrobe](https://researchdata.latrobe.edu.au)
  - LabArchives – an online research notebook



# Research data management planning tool



## Research Data Management Planning Tool

DMP Portal Home

[La Trobe Home](#) > [DMP Portal Dashboard](#)

### Data management plan

Introduction

[Overview](#)

[Personnel](#)

[Data Overview](#)

[Data Storage](#)

[Sensitive Data](#)

[Post Project](#)

[Uploads](#)

[Admin](#)

[Review](#)

## Research Data Management Plan

This tool will guide you through the creation of a Research Data Management Plan. It will prompt you to think about how you will manage data generated and used in your research project, both during the project and afterwards.

The tool aims to introduce researchers to good data management practice, in line with La Trobe's Research Data Management Policy and Procedure.

On completion, you can generate a PDF document that you can use in grant applications or ethics submissions.

As you use the tool:

- click on [?] for more information
- \* indicates a mandatory field

Information gathered from the research data management planning tool will be used to support ongoing review of La Trobe's research data management policy and procedure, and planning for data management support services.

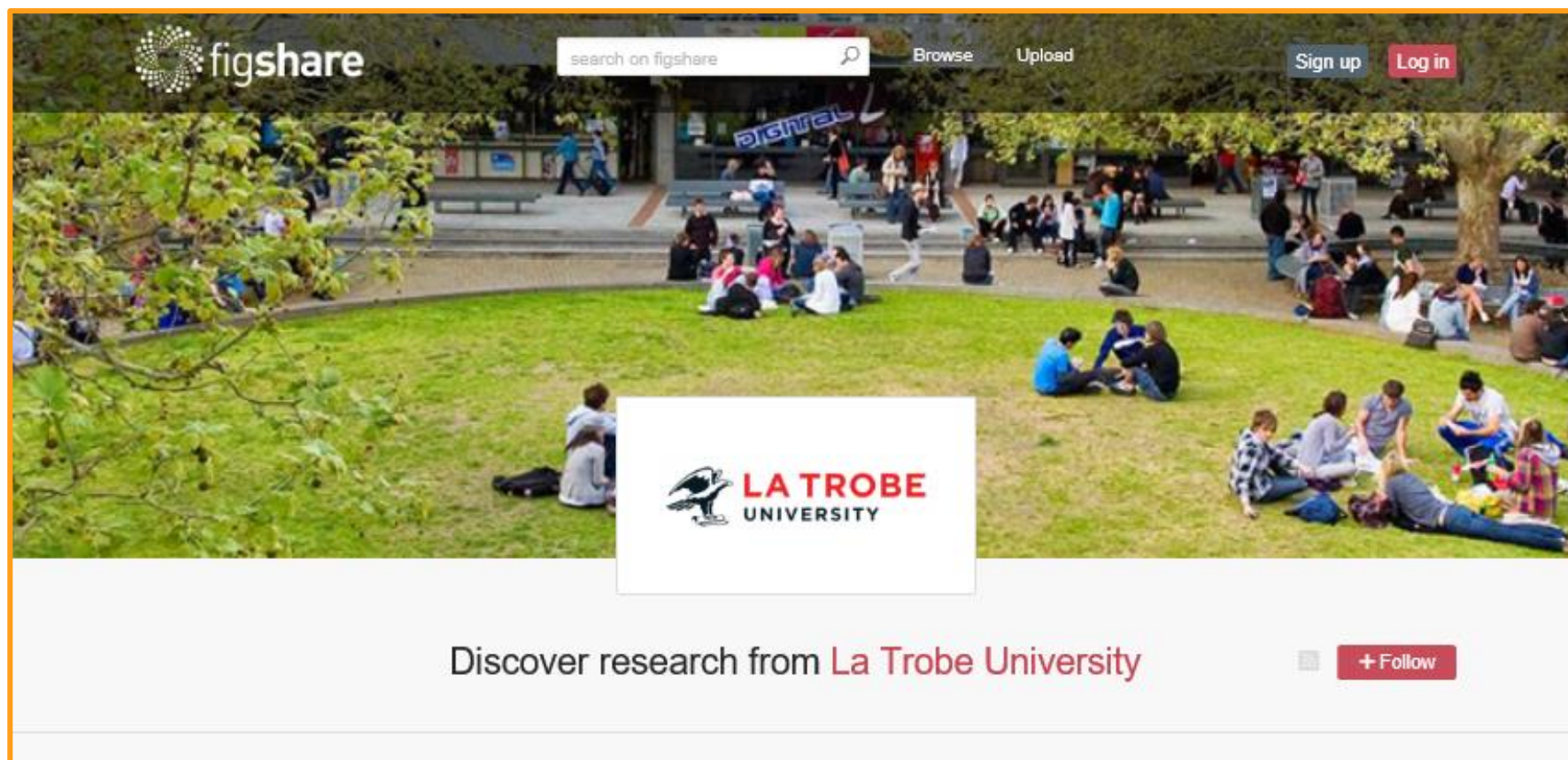
Please note that a research data management plan does not replace the following institutional requirements for ethics and other legal compliance:

- Human ethics
- Animal ethics
- Biosafety
- Defence export control

For further information regarding research integrity, biosafety and ethics approvals, please refer to [Ethics, Biosafety and Integrity](#).

For further queries or assistance please contact [libraryresearchsupport@latrobe.edu.au](mailto:libraryresearchsupport@latrobe.edu.au).

# Figshare (*researchdata.latrobe*)




figshare

search on figshare

Browse Upload

Sign up Log in

 **LA TROBE**  
UNIVERSITY

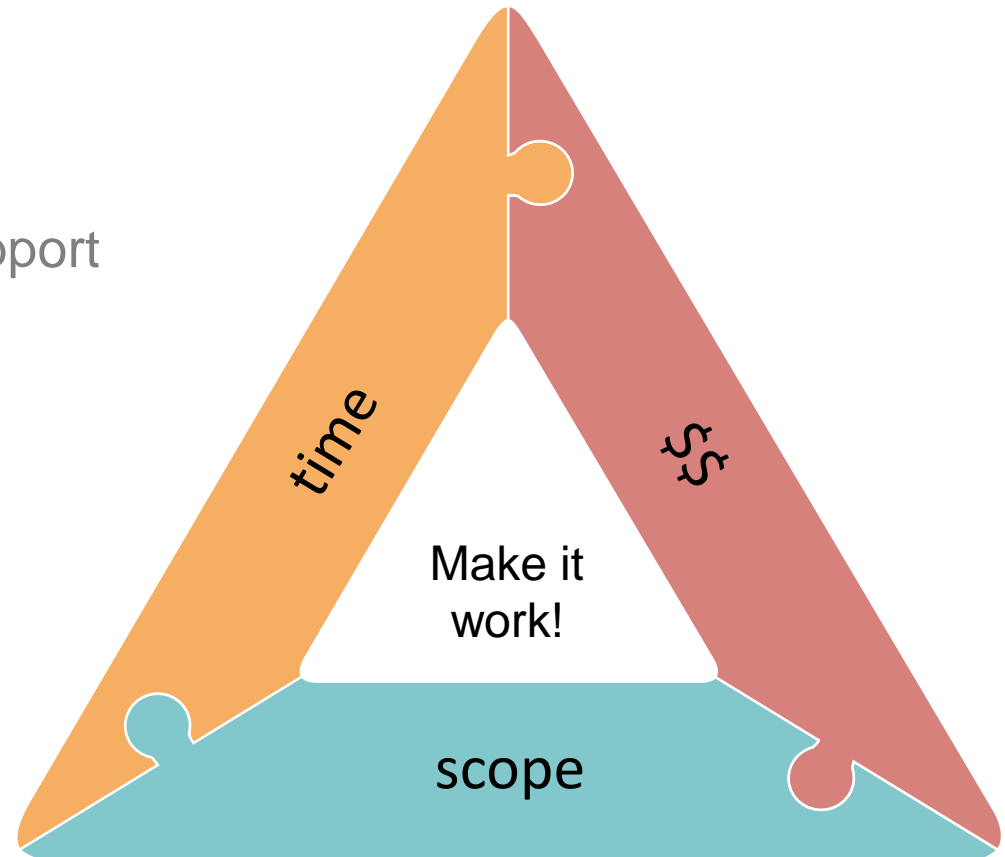
Discover research from **La Trobe University** [+ Follow](#)

# ...online research notebook

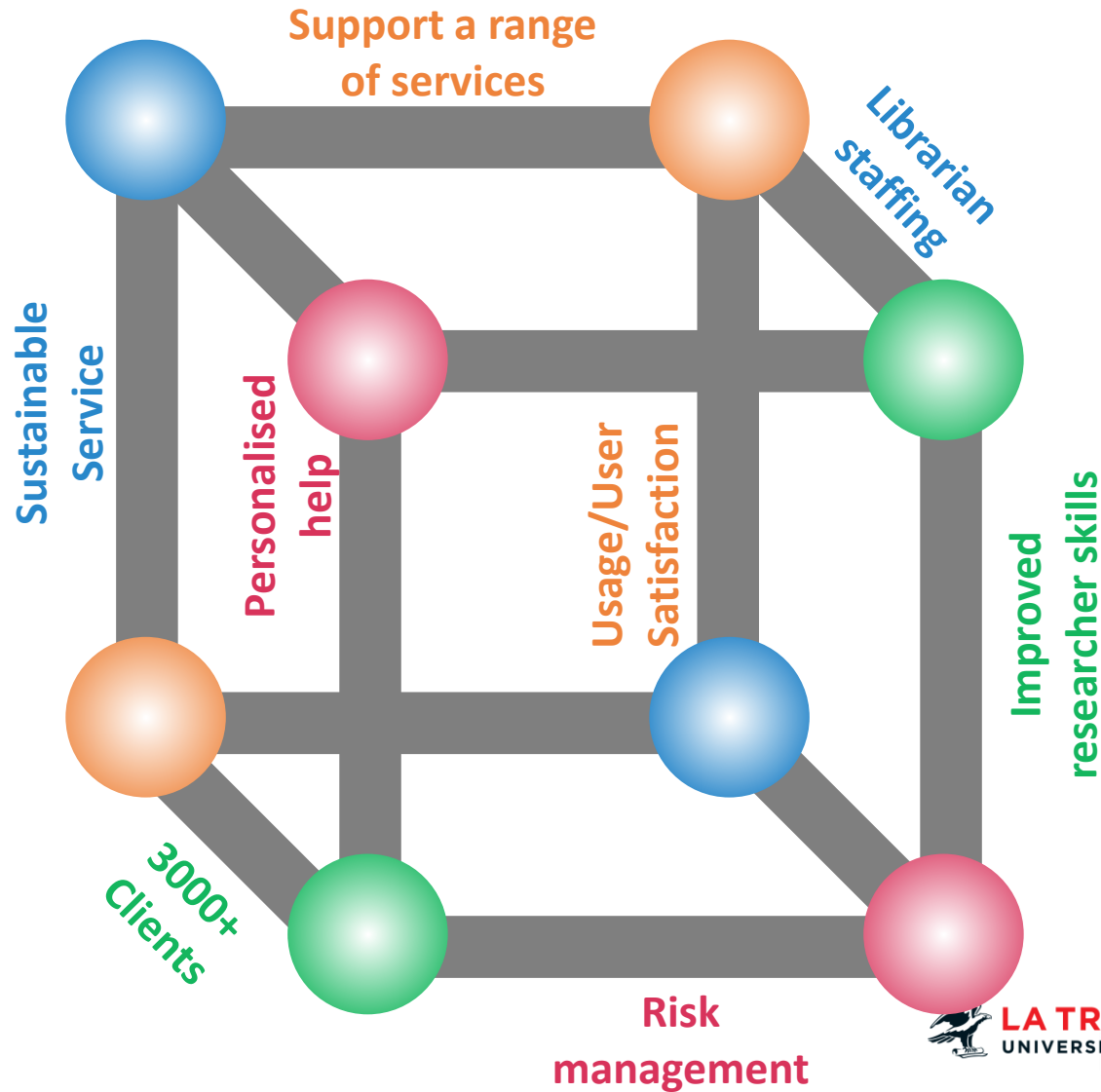


# Project: “Big Bang!”

- Handover plan
- Skills & knowledge of support team
- Ongoing communication, support & training
- Adoption by end users

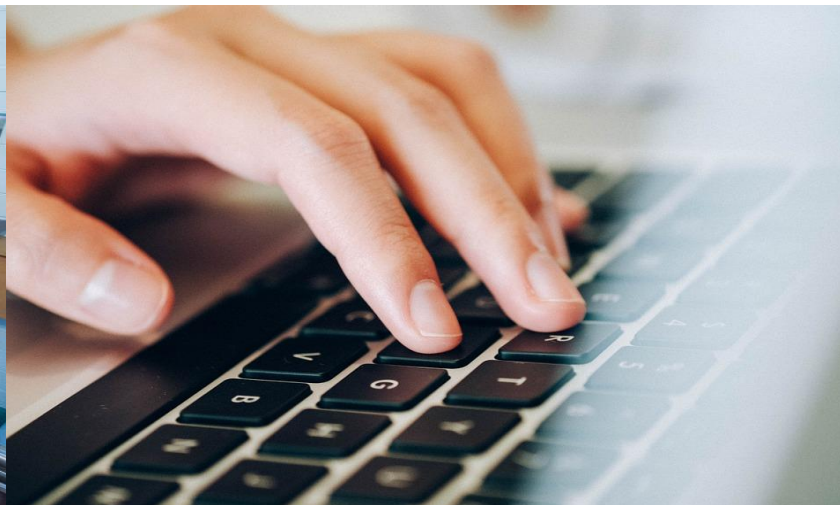
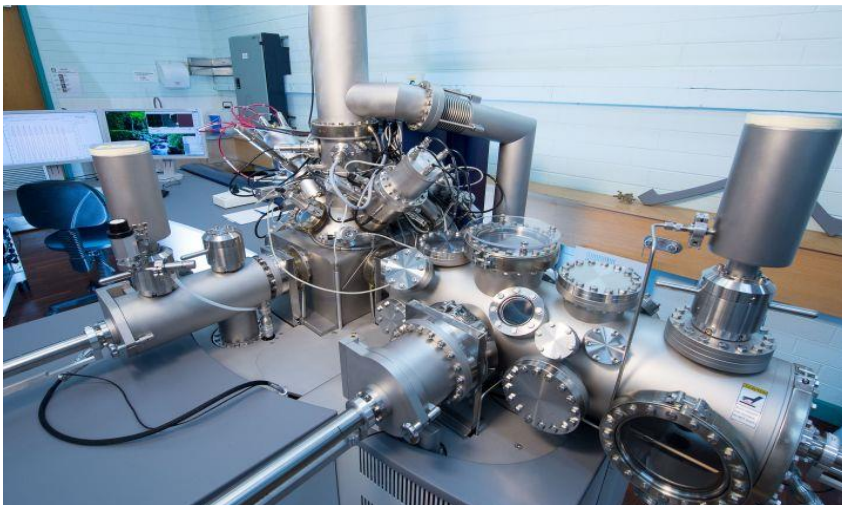


# Business as usual support model





# What we did



# Great returns

- Over 300 La Trobe researchers on Figshare
- Over 1500 Figshare downloads
- Over 50 RDM plans a month
- Over 95% of human ethics applications have a RDM plan

# Great returns

*“I feel I can talk the talk. I would feel comfortable recommending Figshare to researchers if appropriate”*

*“I learned a lot about sensitive data and the risks/ challenges of that. It’s not a black and white area but a complex area with lots of grey which requires dealing with ambiguity and complexity”*

*“It was good to go out on consultations with someone from the research data team to see the demo and hear them talk about it”*

*“I know now that every research project and discipline area has different needs. A one size fits all approach doesn’t always work and sometimes actively alienates certain groups of researchers”*

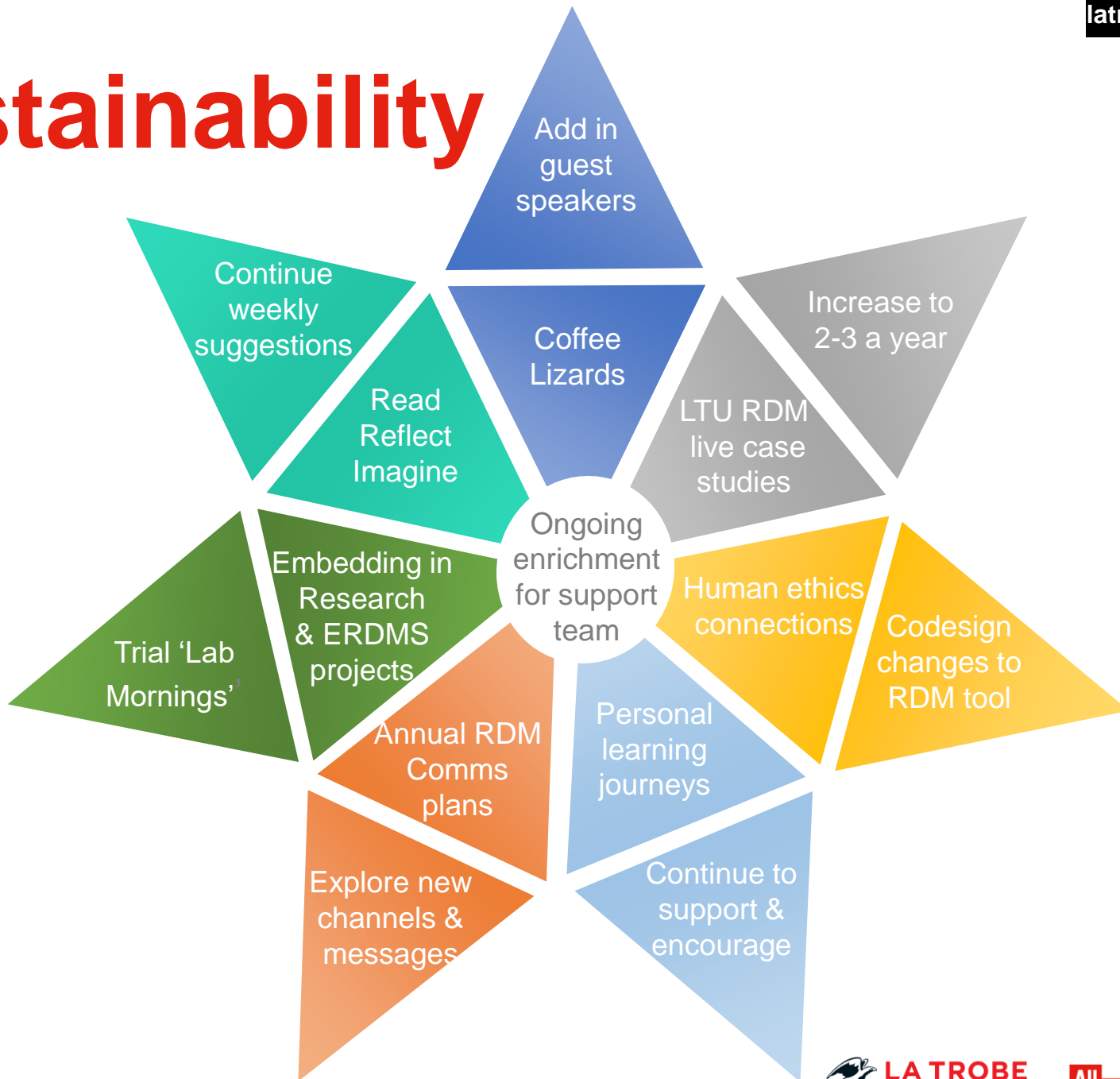
*“This provided me with fantastic opportunities to work and build relationships with key stakeholders including scientists, departmental project managers and key data specialists”*

# Obstacles

- Conceptualising data lifecycle
- Connection
- Time



# Sustainability



# Key takeaways

- Explicit AND tacit knowledge exchange
- Involve operational staff from the start
- Show how project supports BAU roles
- Encourage a learning culture from the top



# Credits

- **Slide 3 ERDMS Project continued....**
- *Money jar with green shoots*, [\[From Pixabay\]](#), Used under [CC0](#) licence.
- **Slide 9 What we did**
- *CMSS Lab*, La Trobe University, Used with La Trobe University permission
- *Human hands typing on a laptop*, [\[From Pixabay\]](#), Used under [CC0](#) licence.
- **Slide 10 Obstacles**
- *Jonathon Hagan on S.Makanally*, [\[From Wikimedia\]](#), Used under [CCBY](#) licence.
- **Slide 13 Sustainability**
- *Sustainability star*, Katie Smith, , Used with La Trobe University permission
- **Slide 14 Key takeaways**
- *Bunch of keys*, [\[From Pixabay\]](#), Used under [CC0](#) licence.



**Thank you**

[latrobe.edu.au](http://latrobe.edu.au)