

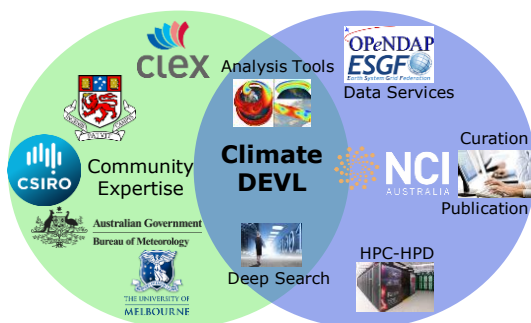
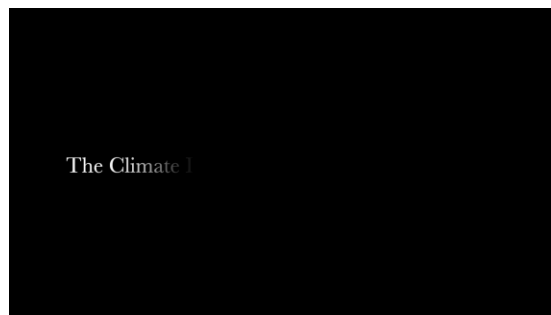
Enhancing climate research capabilities in Australia

The Coupled Model Intercomparison Project phase 6 (CMIP6) is an internationally coordinated endeavour designed to improve our understanding of climate change, with potential to provide improved capabilities to inform policy makers and industries on the consequences of future climate.

Challenges

CMIP6 will be the biggest climate dataset to date, requiring close collaboration between HPC facilities, climate modelling groups, and climate scientists.

<p>Findable</p> <p>Order 10⁶ datasets, >100 models and 287 experiments.</p> <p>Discoverability, search capabilities, metadata standards and PIDs for citation.</p>	<p>Accessible</p> <p>Largest climate data collection to date, expect ~18PB.</p> <p>Australian and international replica priority variables need to be accessible.</p>	<p>Interoperable</p> <p>A diverse range of communities and scientific areas.</p> <p>Coordinated standardisation and documentation enforced and managed.</p>	<p>Reusable</p> <p>netCDF4 format, CF-conventions, diverse user-base.</p> <p>Tools to work with the data that are customisable and high performance.</p>
---	--	--	---



The Climate DEVL is a collaboration that brings together the capabilities of NCI, international federations and Australian climate data experts to provide the complex software and data management needed for Australian CMIP6 research.

International collaboration - World Climate Research Program

International community tools through the Earth System Grid Federation (ESGF)

- ES-DOC (model documentation)
- ESGF web node (data publishing)
- ESGF web search/database (data finding)
- ERRATA service (provenance)
- PrePARE (data QC for publication)
- Synda (data replication)



*SYN*chronise your *DATA*

- Host authoritative copies of high use data • ↑ ↓ • High capacity links to other data nodes
- Publish Australian data products • ↑ ↓ • Data download and DRS conformance
- NCI ESGF node • ↑ ↓ • ESGF software

eResearch platform - NCI

- metadata search capabilities
- publishing software
- managed data replication
- QC checks for data publishing
- analysis & visualisation environment



- Community priorities on data/tools • ↑ ↓ • Install + support tools
- Specialised tools (e.g., CleF) • ↑ ↓ • Deep search capabilities
- Australian CMIP data contributions • ↑ ↓ • Provide data curation/management service

Image Source: <http://www.bom.gov.au/climate/>

Community partnerships - CLEX, BoM, CSIRO

- representation of climate community
- support Australian CMIP6 climate models
- development of specialised tools:
 - CleF climate data finder to search and request data
 - CWSlab and pipeline: user focused flexible workflows
 - model post-processing and evaluation tools

