

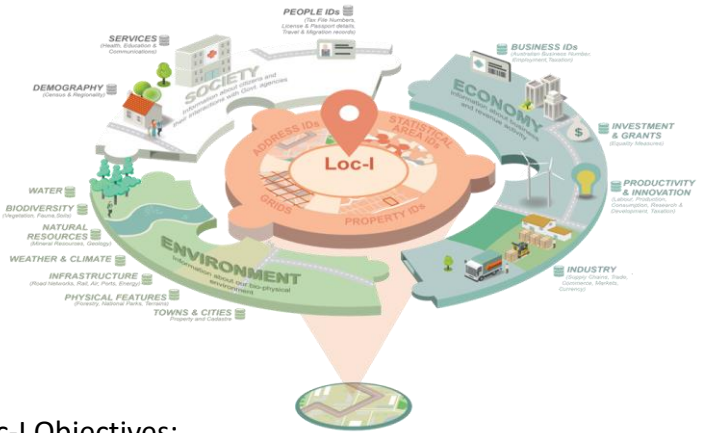
Building New Capabilities for Integrating Data on Earth, Space and Environment - Location Index Project



Everything happens at a place or location

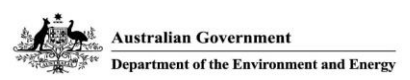
In 2018, the Location Index (LOC-I) project was initiated as part of the Data Integration Partnership for Australia (DIPA) program aiming to build a framework that:

- supports critical government decision making;
- contributes significantly to economic, social and environmental sustainability
- integrates data on people, business, and the environment



The Loc-I Objectives:

- stable, persistent and repeatable access to data
- standardised governance and transparency in data management
- increased interoperability
- enhanced information sharing
- reduced complexity and improve efficiency
- governed and managed federated supply chains

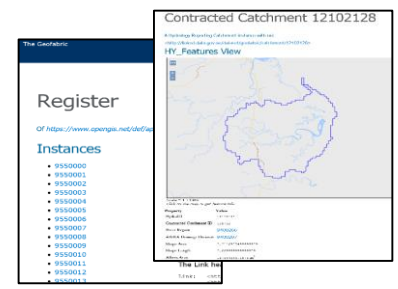


Irina Bastrakova 1, Shane Crossman 2
 1 Geoscience Australia, Canberra, Australia, Irina.Bastrakova@ga.gov.au
 2 Geoscience Australia, Canberra, Australia, Shane.Crossman@ga.gov.au

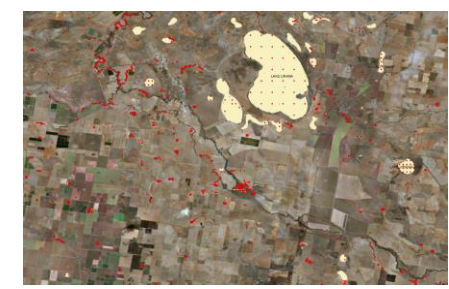
Building GIS without GIS

Semantic Integration of Linked Data

This GIS without GIS framework brings together modern technological approaches of Linked Data and Discrete Global Grid Systems (DGGs). The project also addresses important aspects of Social Architecture to ensure relevance, transparency, openness and accessibility of multidisciplinary data for the Australian Government and non-government users.



Individual Dataset Registries



Calculated indexes of linked datasets



Ontologies for each dataset

UID	area	DGGsAusPID	AusPID/DGGs	Lati	Longi	NeoFID	Basin	HydroID	RiverName	Hierarchy	Perennial	GF3_source	GF3rcFTyp
r74nydp	149400.00...	R7558110447	R7558110447	-26.98814857	149.4032922	r74nydp	Murray-Darling Basin	43566388	YULEBA CREEK	Major	Non Perennial	DEMDerivedStr...	Waterbody Cor
r764qh48	21250.00...	R75554018653	R7555401865	-26.29999484	149.3311487	r764qh48	Murray-Darling Basin	43562532	YULEBA CREEK	Major	Non Perennial	DEMDerivedStr...	Watercourse
r74qb1cx	29370.00...	R75557762110	R7555776211	-26.92810321	149.4165015	r74qb1cx	Murray-Darling Basin	43567286	YULEBA CREEK	Major	Non Perennial	DEMDerivedStr...	Watercourse
r4zp1h5q	70630.00...	R7571161244	R7571161244	-28.27572127	144.8902606	r4zp1h5q	Murray-Darling Basin	43448322	YOWAH CREEK	Major	Non Perennial	DEMDerivedStr...	Watercourse

Earth Observations

Capability to query across datasets

Surface Water