



THE UNIVERSITY OF  
MELBOURNE

# Research Data Allocation Register (RADAR)

Informing strategic infrastructure decisions.

---

**Scott Lewis**

Data Solutions Team -  
Research Computing Services





# In the beginning...

# In the beginning...

(2013)



# In the beginning...

(2013)



???

# In the beginning...

(2013)



# In the beginning...

(2013)



# In the beginning...

(2013)



(2015)







# Planning



# Planning

Research  
Computing  
Services

Legal & Risk

Digital  
Scholarship

Records  
Services

Archives

Ethics

# Planning

Research  
Computing  
Services

Legal & Risk

Digital  
Scholarship

Records  
Services

Archives

Ethics

"What is the **MINIMUM** amount of data that we need to collect...

that enables other people to make decisions about this data?"



# Build



# Build





# Build

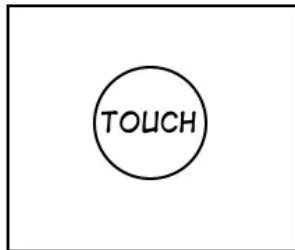


(easy)

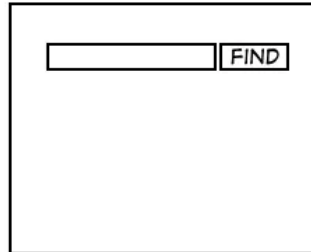
# Build



### TYPICAL APPLE PRODUCT...



### A GOOGLE PRODUCT...



### YOUR COMPANY'S APP...

FIRST NAME: <input type="text"/>	TYPE CD: <input type="text"/>	4 - K				
LAST NAME: <input type="text"/>	TQP STAT: <input type="checkbox"/>	AA2-				
SSN: <input type="text"/>	FT/PT: <input type="checkbox"/>	DK9B				
ID: <input type="text"/>	CAT CD: <input type="text"/>	KKA?				
PHONE 1: <input type="text"/>	CITY: <input type="text"/>	CN3				
PHONE 2: <input type="text"/>	STATE: <input type="text"/>	AA-9				
ADDR 1: <input type="text"/>	ZIP: <input type="text"/>	NEW				
ACCT #: <input type="text"/>	ORD #: <input type="text"/>	DEL				
OKAY	APPLY	SAVE	UNDO	HELP	DELETE	EDIT
SELECT	BROWSE	ERRORS				

STUFFTHATHAPPENS.COM BY ERIC BURKE



# Changes in process



# Changes in process

The five stages of process changes:



# Changes in process

The five stages of process changes:

**Denial**

**Anger**

**Bargaining**

**Depression**

**Acceptance**



# **RADAR for researchers:**



# RADAR for researchers:

- View all research projects

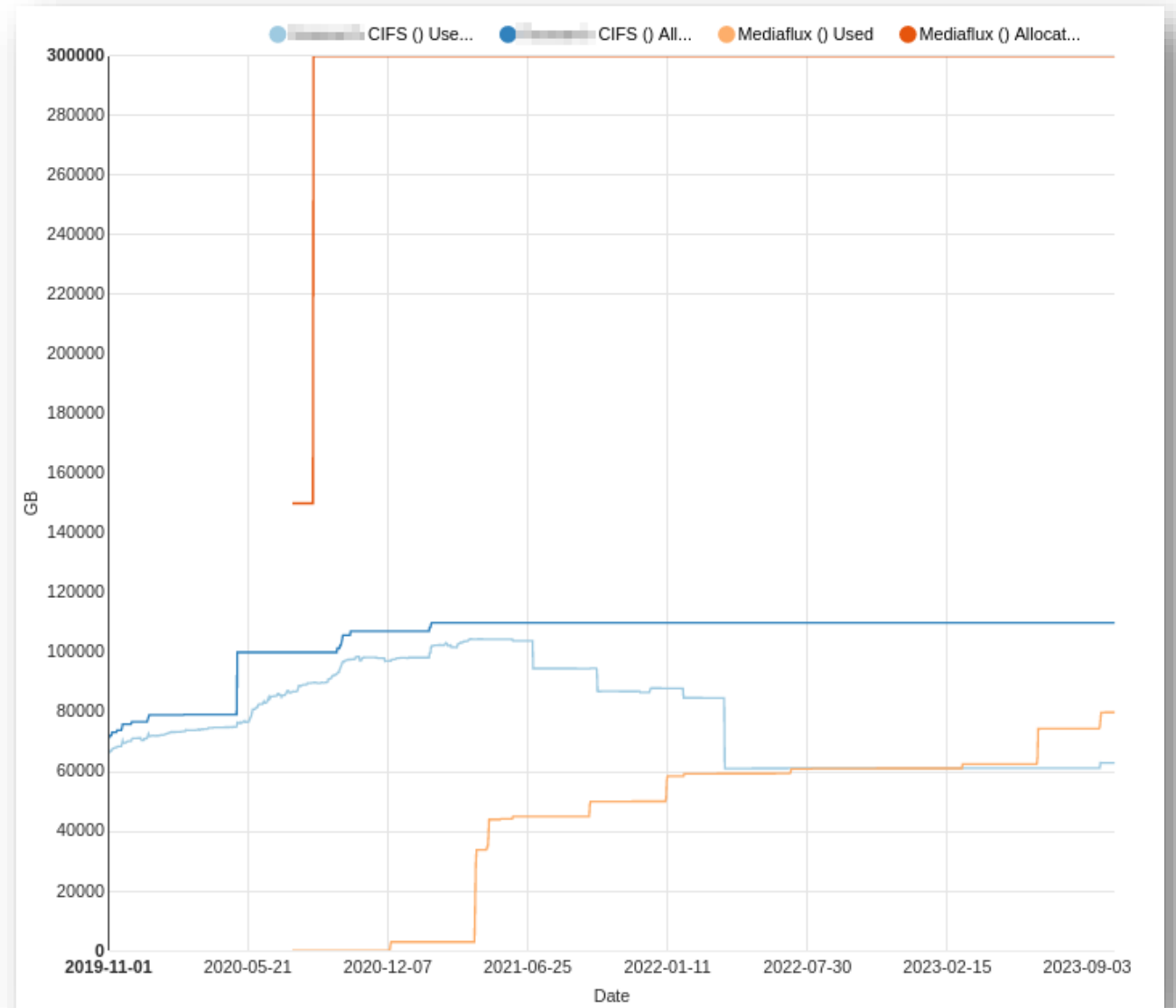
COLLECTIONS		TOOLS
Collections		
Created ↓	Code ↓	Name ↓
2020-07-02	[blurred]	[blurred] <a href="#">morphometric analysis</a> [blurred]
2016-01-01	[blurred]	[blurred] <a href="#">immuno-genetics</a> [blurred]

2 collections.



# RADAR for researchers:

- - View all research projects
- - Review data use





# RADAR for researchers:

- - View all research projects
- - Review data use
- - Nominate colleagues as delegates

## Authorised Contacts

All Authorised Contacts have the ability to request user access or storage product changes. In addition to contacts listed here, there may be additional users who can access files within each storage product.

Add

Username	Email	Role	Actions
[REDACTED]	[REDACTED]@unimelb.edu.au	Research Computing Activity Owner	<a href="#">Edit</a> / <a href="#">Delete</a>
[REDACTED]	[REDACTED]@unimelb.edu.au	Technical Support	<a href="#">Edit</a> / <a href="#">Delete</a>

Research Computing Activity Owners (RCAOs) bear the responsibility for this project's data, as detailed in the [Terms of Service](#). We require authorisation from the RCAO to grant external users access, permit the destruction of data stored or to initiate the change of RCAO process. Changing RCAO requires a nomination by the current RCAO. The proposed RCAO may then accept the role as detailed in the Terms of Service. To initiate this process, please [contact us](#).



# RADAR for researchers:

- View all research projects
- Review data use
- Nominate colleagues as delegates
- Request quota increases

### Storage Products, Usage and Quotas

Your storage products and their quotas are listed below (click to expand). [Add](#)

Region: **Wellington** ▼

Mount path: **None set** ▼

CIFS ▲

Used:	21360 GB	<a href="#">Usage History</a>
Quota:	20000 GB	<a href="#">Quota History</a>
Status:	Provisioned	
Path:	No path.	<a href="#">Change Path</a>
Custom mount path:	None set.	

NetApp: Usage is the amount of data that you're storing, plus data being protected in snapshots, minus the capacity saved through storage efficiencies such as deduplication and compression.

#### Manage product

New Quota (GB)

Reason

*Optionally specify a reason for this change.*

[Increase Quota](#)

[Decommission](#)



# RADAR for researchers:

- - View all research projects
- - Review data use
- - Nominate colleagues as delegates
- - Request quota increases
- - Edit metadata

Project or activity type: \*

Program of projects (eg Group, Unit, Institutes) ▾

Field of research code 1: \*

390109 Mathematics and numeracy curriculum and pedagogy ▾

Field of research code 2:

----- ▾

Field of research code 3:

----- ▾

Field of research code 4:

----- ▾

Year commenced: \*

2020 ▾

Expected completion year: \*

2028 ▾

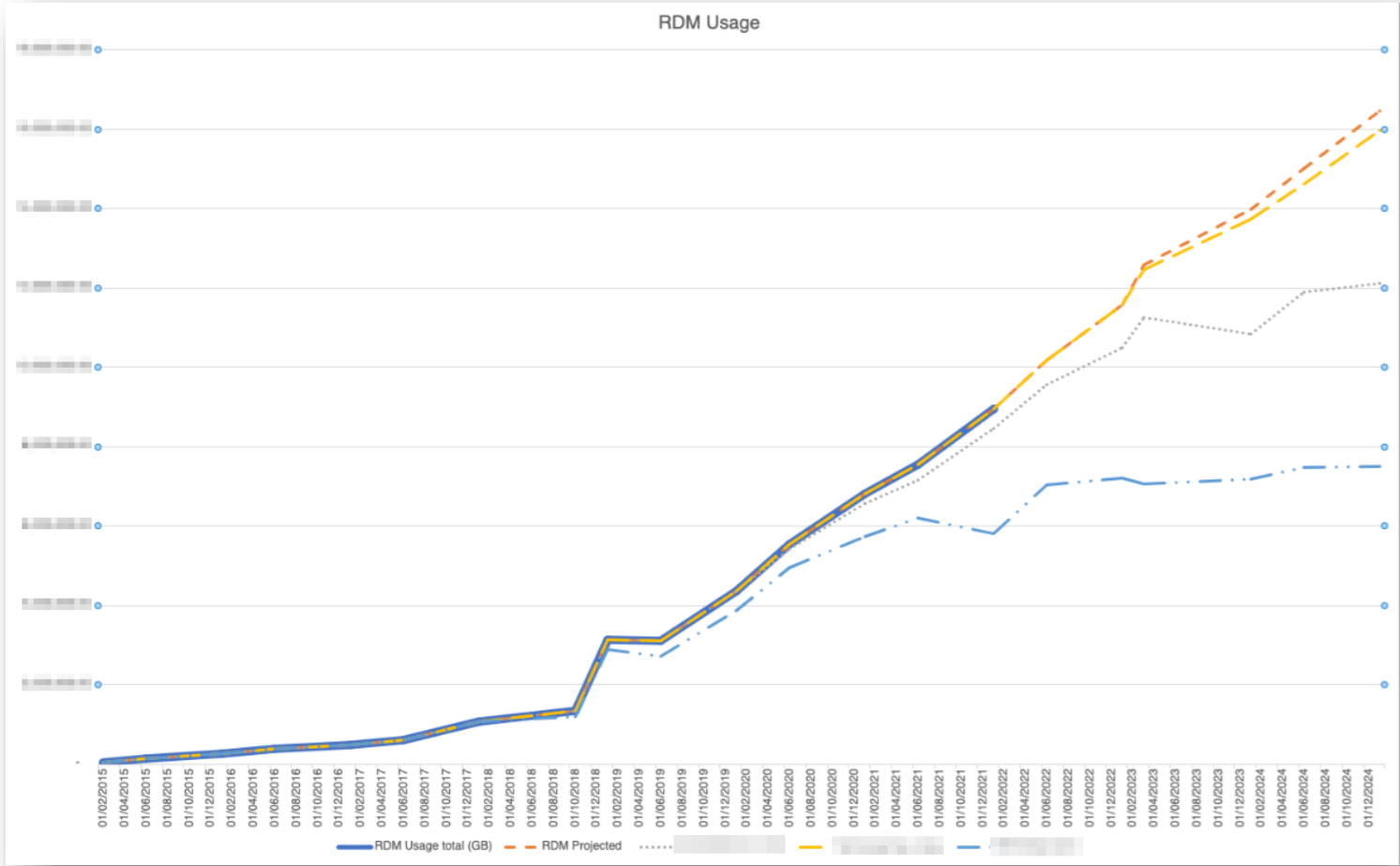
Estimated review year:

2033 ▾



# RADAR for support staff:

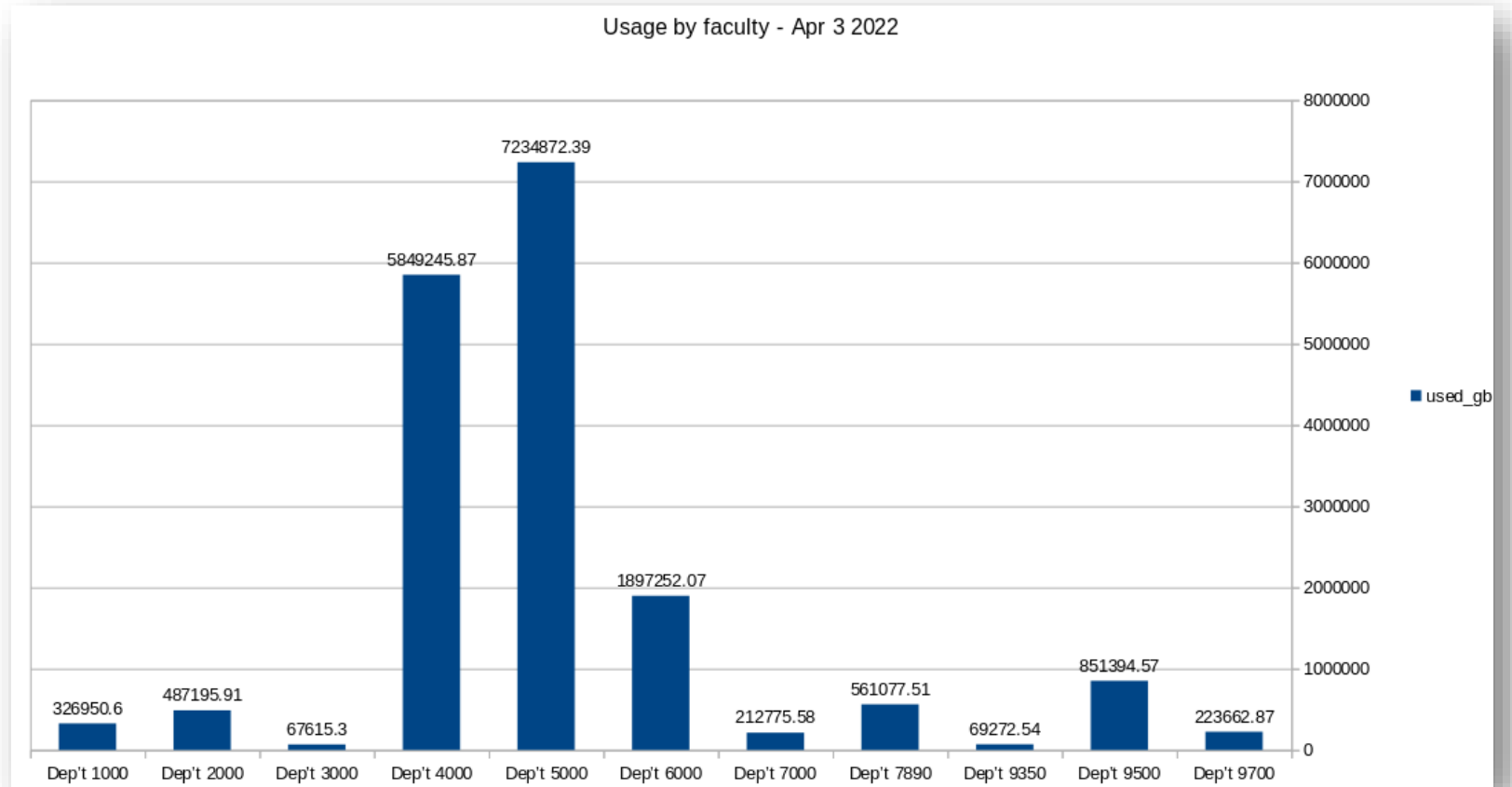
- Track wholistic data growth





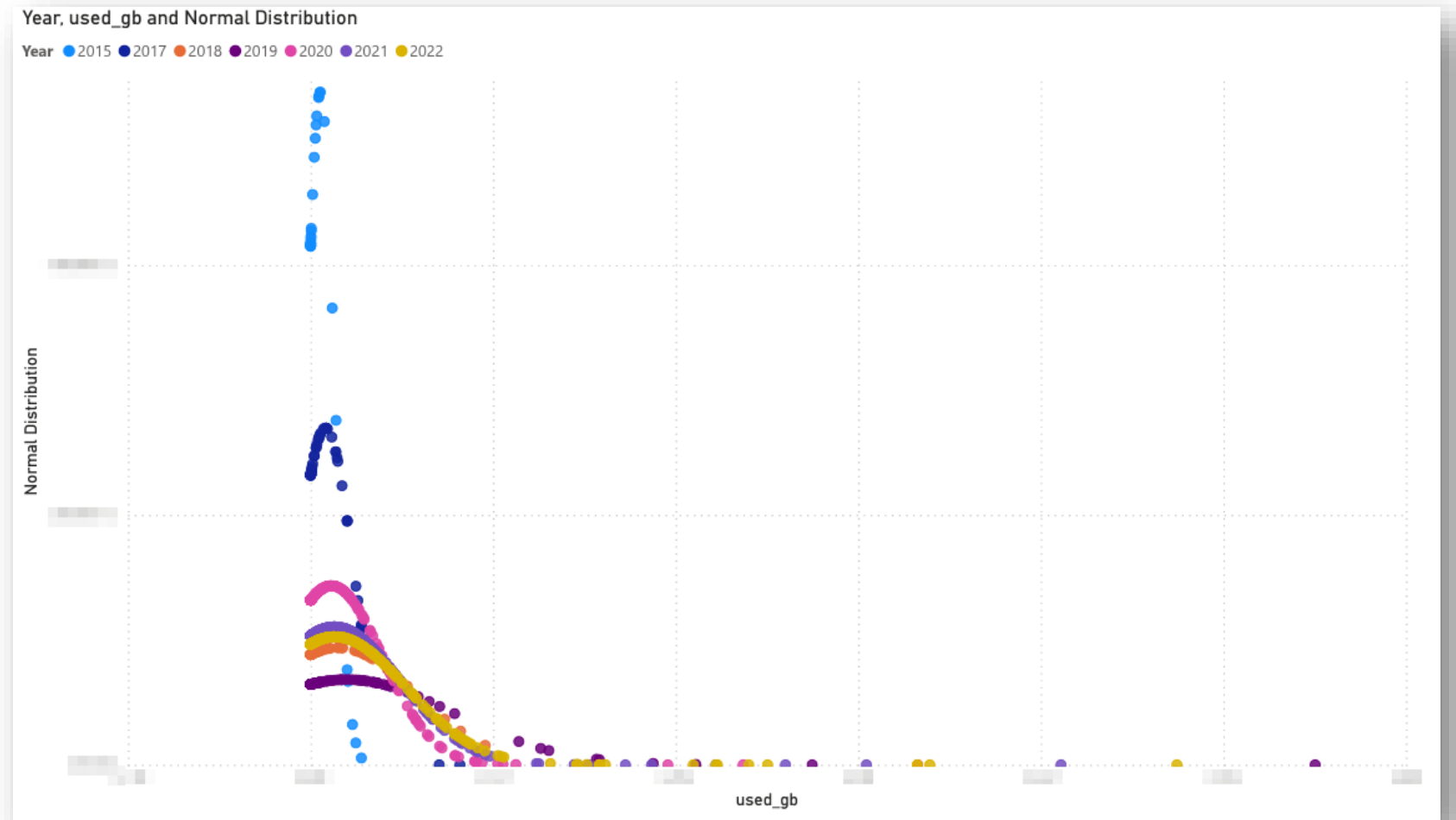
# RADAR for support staff:

- Track wholistic data growth
- Micro-level investigation



# RADAR for support staff:

- Track wholistic data growth
- Micro-level investigation
- Distribution curves





# RADAR for support staff:

- Track wholistic data growth
- Micro-level investigation
- Distribution curves
- Audit history

Details	Changes
Date: 29 Jul 2021 User: [redacted]	[redacted] updated [redacted] to [redacted]
Date: 23 Jul 2021 User: [redacted] Reason: [redacted] has left the University	Contact deleted: [redacted] (Technical Support).
Date: 23 Jul 2021 User: [redacted]	Contact created: [redacted] (Technical Support).
Date: 19 Jul 2021 User: [redacted]	Product provisioned: [redacted] (no path). • quota: 70000 to 85000
Date: 4 Jun 2021 User: [redacted] Reason: Auto approved (user was admin)	Product approved: [redacted] (no path).
Date: 4 Jun 2021 User: [redacted] Reason: In discussion in email with ARO ([redacted]) so that they can still work whilst reduction activities ([redacted]) continue	Product requested [redacted] (no path). • quota_requested: 70000 to 85000
Date: 4 Jul 2019 Reason: Migration 0017_add_product_path_support	Product provisioned: [redacted] (no path). • quota: 0 to 70000

# RADAR for support staff:

- Track wholistic data growth
- Micro-level investigation
- Distribution curves
- Audit history
- Alerts when active researchers leave



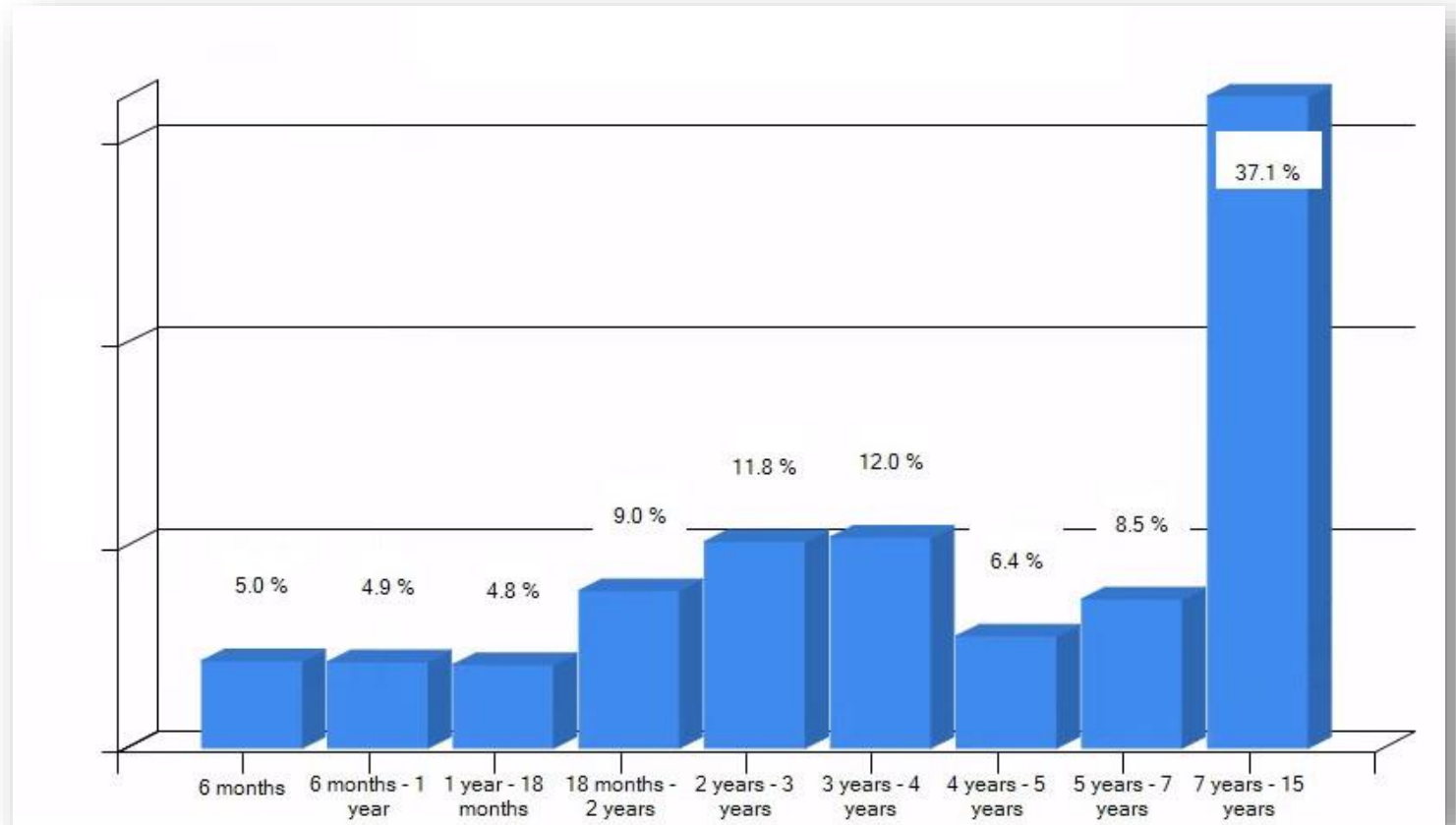
# RADAR for support staff:

- Track wholistic data growth
- Micro-level investigation
- Distribution curves
- Audit history
- Alerts when active researchers leave
- Retention: Obligation Overviews



# RADAR for support staff:

- Track wholistic data growth
- Micro-level investigation
- Distribution curves
- Audit history
- Alerts when active researchers leave
- Retention: Obligation Overviews
- Retention: Insights





# Painting the pictures

# Painting the pictures

## All Queries

Query	Created	CSV	Play	Delete	Run Count
#Donsal down of usage	18/12/2018 by [user]				54
#Donsal down of usage by faculty	18/12/2018 by [user]				101
#Donsal down of usage by storage product and faculty	18/12/2018 by [user]				32
Automated reporting	26/07/2023 by [user]				44
Collection code, name, Custodian & allocation and usage (products summed on a date (exclude old products))	11/02/2020 by [user]				19
Collectors ID's with their first request code	26/10/2018 by [user]				3
Collection information, current usage, with Custodian (ABC)	25/03/2022 by [user]				8
Collection information, usage, all products, with Custodian (ABC)	09/02/2022 by [user]				23
Collection information, usage, product (new model) for a user lab department	12/04/2023 by [user]				19
Collection information users for a product (new model)	28/08/2019 by [user]				10
Collection information users, usage, product (new model)	28/08/2019 by [user]				43
Collectors (new model)	19/07/2019 by [user]				28
Collectors products (new model)	19/07/2019 by [user]				54
Collectors that don't have usage reports	17/05/2021 by [user]				6
Collectors that use a product	20/11/2018 by [user]				8
Collectors that use a product and allocations	20/11/2018 by [user]				5
Collectors that use a product and their allocation summed	15/11/2018 by [user]				9
Collection usage for a product (new model)	20/08/2019 by [user]				45
Collection usage for a product on a date	20/11/2018 by [user]				23
Collection usage for a product on a date (new model)	01/11/2019 by [user]				30
Collection usage for a product on a date with contact details	24/01/2019 by [user]				27
Collection usage, units, per product with custodian UID	12/12/2022 by [user]				5
Contacts, their role and associated project	25/03/2019 by [user]				10

# Painting the pictures

All Queries

Query	Created	CSV	Play	Delete	Run Count
#Bonds down of usage	18/12/2018 by [user]	📄	▶	🗑️	54
#Bonds down of usage by facility	18/12/2018 by [user]	📄	▶	🗑️	101
#Bonds down of usage by storage product and facility	18/12/2018 by [user]	📄	▶	🗑️	32
Automated reporting	26/07/2023 by [user]	📄	▶	🗑️	44
Collection code, name, Custodian & allocation and usage (products summed on a date exclude old products)	11/02/2020 by [user]	📄	▶	🗑️	19
Collectors ID's with their first request code	26/10/2018 by [user]	📄	▶	🗑️	3
Collection information, current usage, with Custodian (ABC)	25/03/2022 by [user]	📄	▶	🗑️	8
Collection information, usage, all products, with Custodian (ABC)	09/02/2022 by [user]	📄	▶	🗑️	23
Collection information, usage, product (new model) for a certain department	12/04/2023 by [user]	📄	▶	🗑️	19
Collection information users for a product (new model)	28/08/2019 by [user]	📄	▶	🗑️	10
Collection information users, usage, product (new model)	28/08/2019 by [user]	📄	▶	🗑️	43
Collectors (new model)	19/07/2019 by [user]	📄	▶	🗑️	28
Collectors products (new model)	19/07/2019 by [user]	📄	▶	🗑️	54
Collectors that don't have usage reports	17/05/2021 by [user]	📄	▶	🗑️	6
Collectors that use a product	20/11/2018 by [user]	📄	▶	🗑️	8
Collectors that use a product and allocations	20/11/2018 by [user]	📄	▶	🗑️	5
Collectors that use a product and their allocation summed	15/11/2018 by [user]	📄	▶	🗑️	9
Collection usage for a product (new model)	20/08/2019 by [user]	📄	▶	🗑️	45
Collection usage for a product on a date	20/11/2018 by [user]	📄	▶	🗑️	23
Collection usage for a product on a date (new model)	01/11/2019 by [user]	📄	▶	🗑️	30
Collection usage for a product on a date with custom details	24/01/2019 by [user]	📄	▶	🗑️	27
Collection usage, quota, per product with custodian UID	12/12/2022 by [user]	📄	▶	🗑️	5
Contacts, their role and associated project	25/03/2019 by [user]	📄	▶	🗑️	10



All Queries

Query	Created	CSV	Play	Delete	Run Count
#Bonds down of usage	18/12/2018 by [user]	📄	▶	🗑️	54
#Bonds down of usage by facility	18/12/2018 by [user]	📄	▶	🗑️	101
#Bonds down of usage by storage product and facility	18/12/2018 by [user]	📄	▶	🗑️	32
Automated reporting	26/07/2023 by [user]	📄	▶	🗑️	44
Collection code, name, Custodian & allocation and usage (products summed on a date exclude old products)	11/02/2020 by [user]	📄	▶	🗑️	19
Collectors ID's with their first request code	26/10/2018 by [user]	📄	▶	🗑️	3
Collection information, current usage, with Custodian (ABC)	25/03/2022 by [user]	📄	▶	🗑️	8
Collection information, usage, all products, with Custodian (ABC)	09/02/2022 by [user]	📄	▶	🗑️	23
Collection information, usage, product (new model) for a certain department	12/04/2023 by [user]	📄	▶	🗑️	19
Collection information users for a product (new model)	28/08/2019 by [user]	📄	▶	🗑️	10
Collection information users, usage, product (new model)	28/08/2019 by [user]	📄	▶	🗑️	43
Collectors (new model)	19/07/2019 by [user]	📄	▶	🗑️	28
Collectors products (new model)	19/07/2019 by [user]	📄	▶	🗑️	54
Collectors that don't have usage reports	17/05/2021 by [user]	📄	▶	🗑️	6
Collectors that use a product	20/11/2018 by [user]	📄	▶	🗑️	8
Collectors that use a product and allocations	20/11/2018 by [user]	📄	▶	🗑️	5
Collectors that use a product and their allocation summed	15/11/2018 by [user]	📄	▶	🗑️	9
Collection usage for a product (new model)	20/08/2019 by [user]	📄	▶	🗑️	45
Collection usage for a product on a date	20/11/2018 by [user]	📄	▶	🗑️	23
Collection usage for a product on a date (new model)	01/11/2019 by [user]	📄	▶	🗑️	30
Collection usage for a product on a date with custom details	24/01/2019 by [user]	📄	▶	🗑️	27
Collection usage, quota, per product with custodian UID	12/12/2022 by [user]	📄	▶	🗑️	5
Contacts, their role and associated project	25/03/2019 by [user]	📄	▶	🗑️	10



# The roadmap

# The roadmap



(Prototype UI for modelling)

# The roadmap



(Prototype UI for modelling)



(Automation)

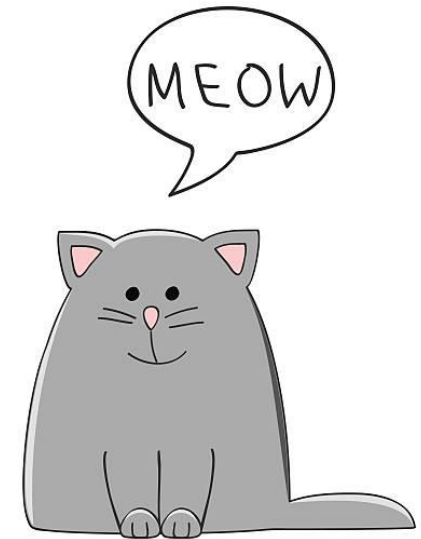
# The roadmap



(Prototype UI for modelling)



(Automation)



(Promotion)



# In conclusion:



# In conclusion:



cautious  
planning

# In conclusion:



cautious  
planning



simplistic  
development

# In conclusion:



cautious  
planning



simplistic  
development



a friendly front  
end

# In conclusion:



cautious  
planning



simplistic  
development



a friendly front  
end



a world of  
insights

# In conclusion:



cautious  
planning



simplistic  
development



a friendly front  
end



a world of  
insights



Focus on  
retention

# In conclusion:



cautious  
planning



simplistic  
development



a friendly front  
end



a world of  
insights



Focus on  
retention



room for  
enhancement



THE UNIVERSITY OF  
MELBOURNE

# Thank you

Questions?

---