

Driving community engagement with National Research Infrastructures

Birds of a Feather - eResearch Australasia 2023



Acknowledgement of Country

We acknowledge the Turrbal and Jagera/Yuggera people as Traditional Owners and custodians of the lands on which we meet today and pay our respects to their Ancestors and their descendants.



Welcome and introductions

- **Who is here:** Communication, training and engagement professionals from across the e-research infrastructure sector who engage with researchers/industry/government

Research infrastructures support researchers, communities, decision makers and other users by providing access to tools, data, software, technology, facilities and technical expertise.

- **Session goals:**
 1. Share engagement and training efforts/strategies
 2. Identify areas for collaboration
 3. Identify challenges/barriers and brainstorm potential solutions

- **Definition of “community/communities” and “engagement”**
(including training, communications, etc)

Driving community engagement with National Research Infrastructures

eResearch Australasia 2023

[BoF Abstract](#)

[Slides](#)

Who's here today (include your email address if you're happy to be contacted)

Melissa Burke, Australian BioCommons (melissa@biocommons.org.au)

....

Community notes

tinyurl.com/RI-community

Lightning talks



Australian Access Federation (AAF)

Kerry Mora



Trust & Identity for National Research Infrastructure

KERRY MORA AND SARAH THOMAS
eResearch Australasia 2023

NCRIS
National Research
Infrastructure for Australia
An Australian Government Initiative



AUSTRALIAN
ACCESS FEDERATION

Experts in
Trust & Identity

Australian Access Federation



AUSTRALIAN
ACCESS FEDERATION

Experts in
Trust & Identity



103

Organisations
connected to the AAF



300+

Australian service
connections



370+

International service
connections



4M

Sessions for all
services

What is Trust & Identity for NRI?

We're connecting national research infrastructure through a shared understanding of a user's identity

We're partnering with national research infrastructures (NRI) to build a system-wide approach to identity and access management, which will improve connectivity across the NRI ecosystem. Researchers will be able to login once, have their identity verified and seamlessly access resources across organisational boundaries to collaborate.



Experts in
Trust & Identity



Benefits for NRIs



Experts in
Trust & Identity



Easier access to national research infrastructure through seamless services

Creating a more researcher-centric NRI ecosystem that reduces the time and complexity for researchers to access multiple services.



Better access to international research infrastructure

Working in step with global best practice developments in interoperability and collaboration.



A connected NRI ecosystem for better industry collaboration

Partnering with industry and global identity providers to build and implement the next generation of T&I solutions.



A safer and more secure NRI ecosystem

Ensuring the safety and security of our national assets by protecting them against cyber security risks.



Transformation across research themes

Opening up data and opportunities for collaboration across research themes such as environmental science, space, health sciences and more.

Our approach to engagement, collaboration and community



Experts in
Trust & Identity



Co-design with the community

An analysis of the NRI ecosystem to gain an understanding of the current landscape.



Needs based

Through a series of meetings and conversations identify and understand the organisations needs and how we can collaborate and partner with them to implement Trust & Identity.



Communication

Segmented communication targeted to the different audience groups dependent on their needs.



Collaboration

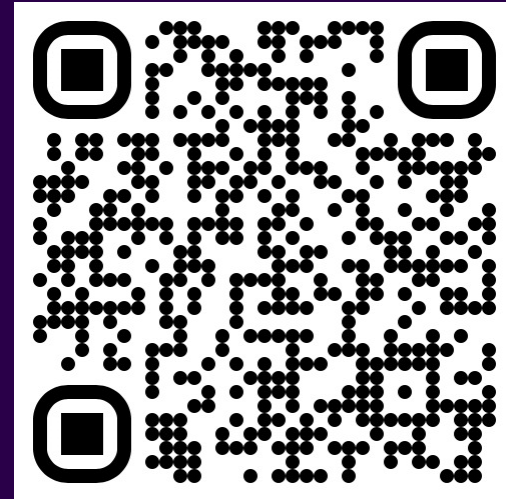
Through Policy Working Groups, Incubators, Information Sessions and digital resources, we are building a collaborative approach to the implementation of Trust & Identity across the NRI ecosystem.

Thank you



Experts in
Trust & Identity

**Fill in our Survey
and you can go
into the draw to
WIN 1 of 3
\$50 Gift Cards***



*Terms and conditions apply please visit aaf.edu.au. Competition closes 31 October 2023.

ACCESS-NRI

Aidan Heerdegen

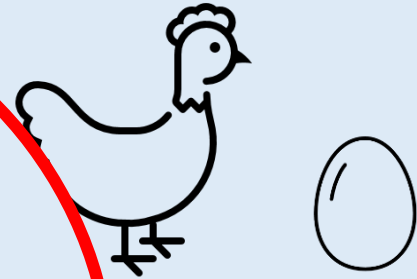


Value proposition

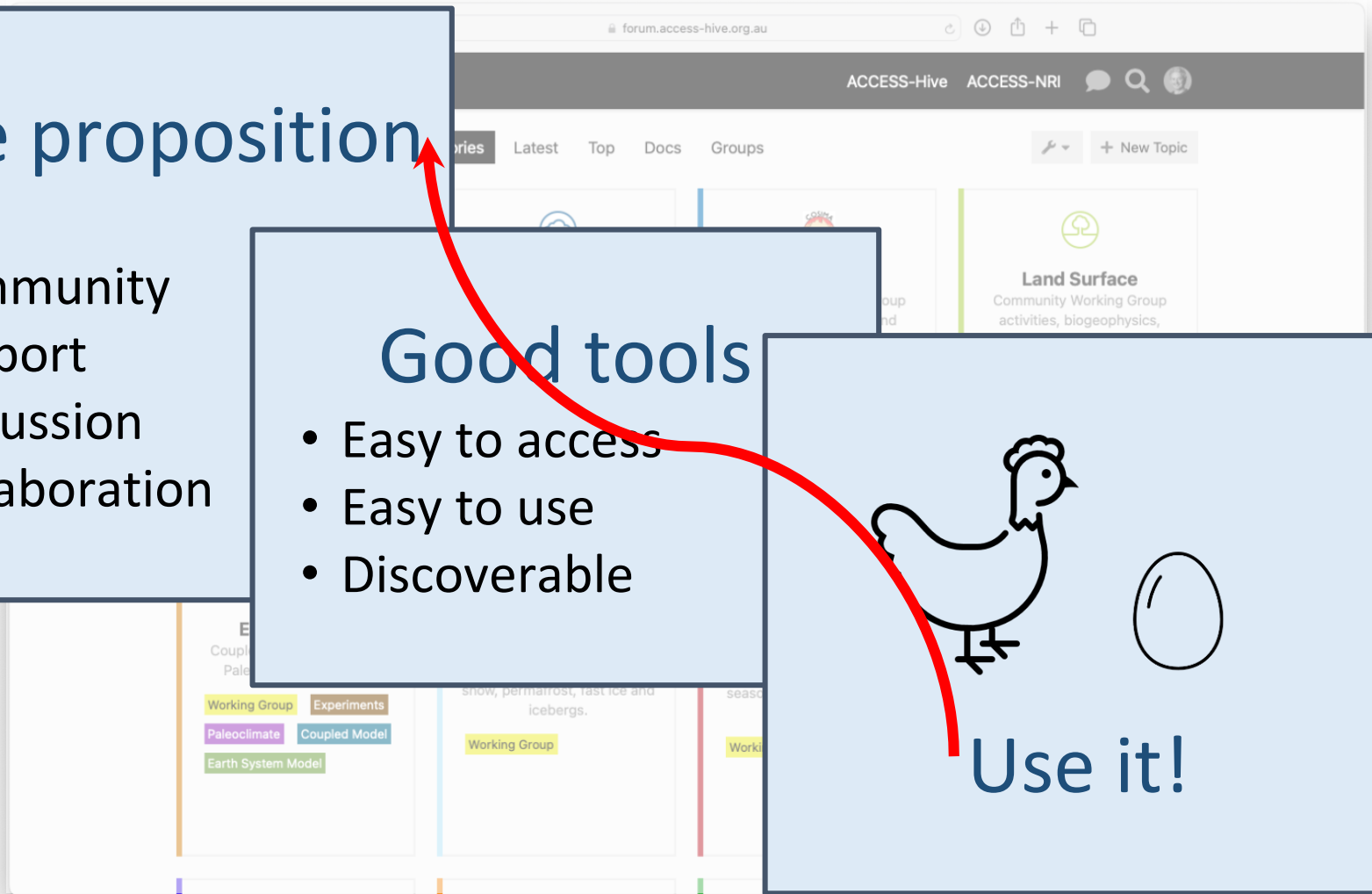
- Community
- Support
- Discussion
- Collaboration

Good tools

- Easy to access
- Easy to use
- Discoverable



Use it!



Australian BioCommons

Melissa Burke





Australian **BioCommons**

Actively supporting Australian life sciences research through
bioinformatics and bioscience data infrastructure

biocommons.org.au

Follow us on:   

Engaging with our community through training



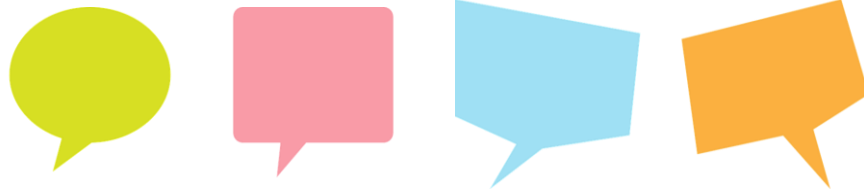
We support volunteer trainers to deliver events nationally

Find out more

About the training program biocommons.org.au/biocommons-training

Our engagement model biocommons.org.au/get-involved

Talk to me this week or email melissa@biocommons.org.au



ARDC

Kathryn Unsworth





Australian Research Data Commons

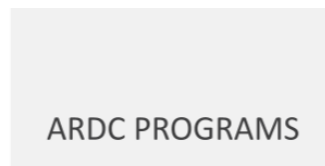
The ARDC believes in the value of research data assets:

To maximise research quality and impact

To accelerate Australian research and innovation

How?

By driving excellence in the creation, analysis and retention of high-quality data assets.



About the ARDC



Skills Network

- What is it?
- Value proposition



Where to From Here?



Contact us: contact@ardc.edu.au

INTERNATIONAL DATA WEEK 2025

*Trusted research data driving
innovation and a better world*



Australian Research Data Commons



NCRIS
National Research
Infrastructure for Australia
An Australian Government Initiative

The ARDC
is enabled
by NCRIS



COMMITTEE ON DATA
CODATA
INTERNATIONAL
SCIENCE COUNCIL



RDA
RESEARCH DATA ALLIANCE



**WORLD
DATA SYSTEM**




See you in
Brisbane
Australia

13 - 16 OCTOBER 2025

AURIN

Emma Joughin





AURIN delivers critical and hard-to-get data to government and researchers across Australia, supporting innovative research and policy decisions to address key national and global challenges on Australian cities and regions.

AURIN provides digital Infrastructure and expert e-Research support for urban, regional, and social science researchers in academia, government, and industry.

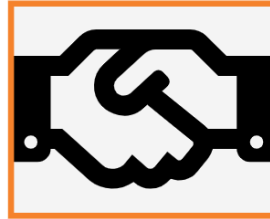
AURIN has served over 24,000 users, providing access to over 5,000 datasets focusing on urban systems and regional centres.



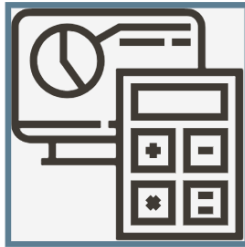
Clean



Negotiate Access



Spatially Enable



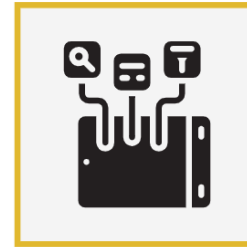
Generate & Harmonise



Preserve



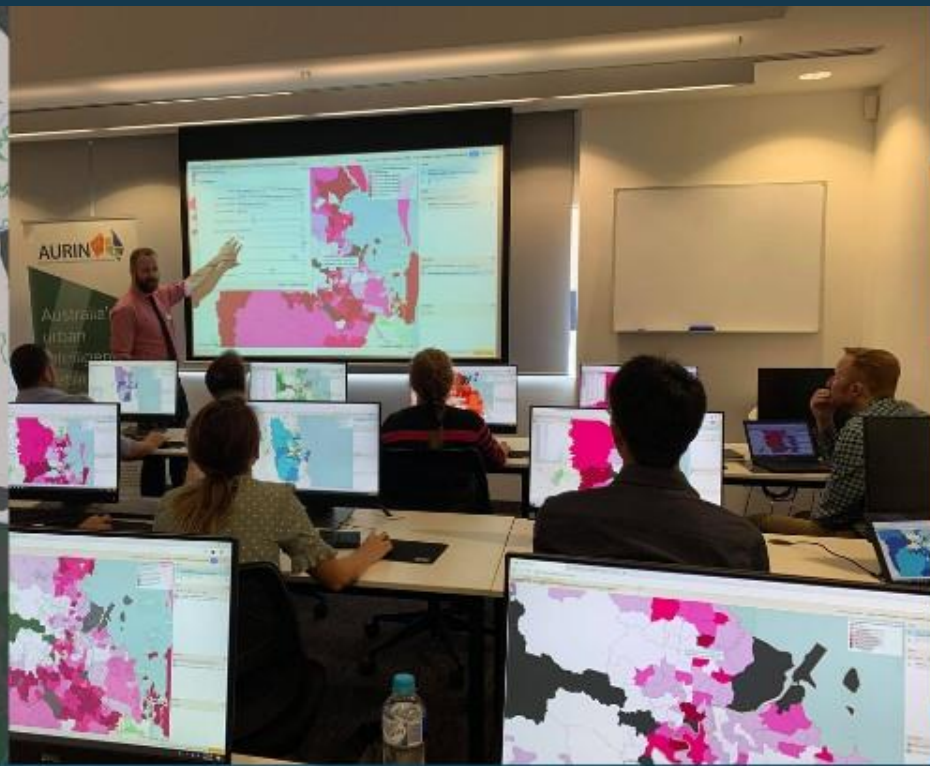
Purchase



Curate

miro





LEARN TO ACCESS, ANALYSE & VISUALISE SPATIAL DATA
TO SUPPORT YOUR GEOGRAPHIC RESEARCH



Ideas wall



Thinking of your community and how you engage with them...

What works well?

Miro board - <https://shorturl.at/gMPS6>



Thinking of your community and how you engage with them...

What do you wish you could do?

Miro board - <https://shorturl.at/gMPS6>



Thinking of your community and how you engage with them...

Hints and tips/resources you've found useful

Miro board - <https://shorturl.at/gMPS6>



Summary and wrap up

