

The real infrastructure is the friends we make along the way

Evelyn Ansell

Queensland Cyber Infrastructure Foundation

eve.ansell@qcif.edu.au

Sam Hames

*Language Data Commons of Australia
The University of Queensland*

s.hames@uq.edu.au



What is 'team-expertise'?



What is 'team-expertise'?

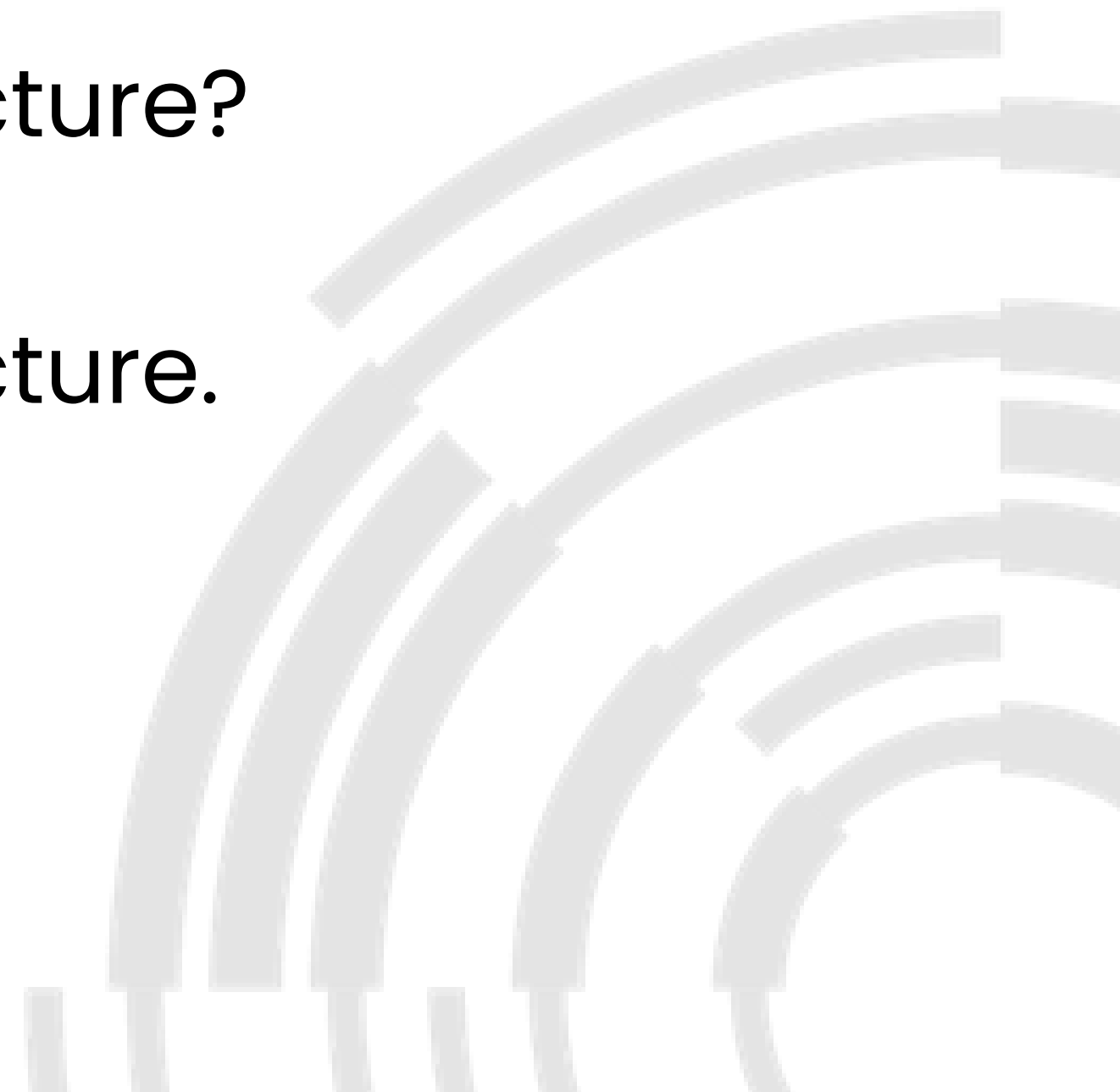
Team-expertise as infrastructure?

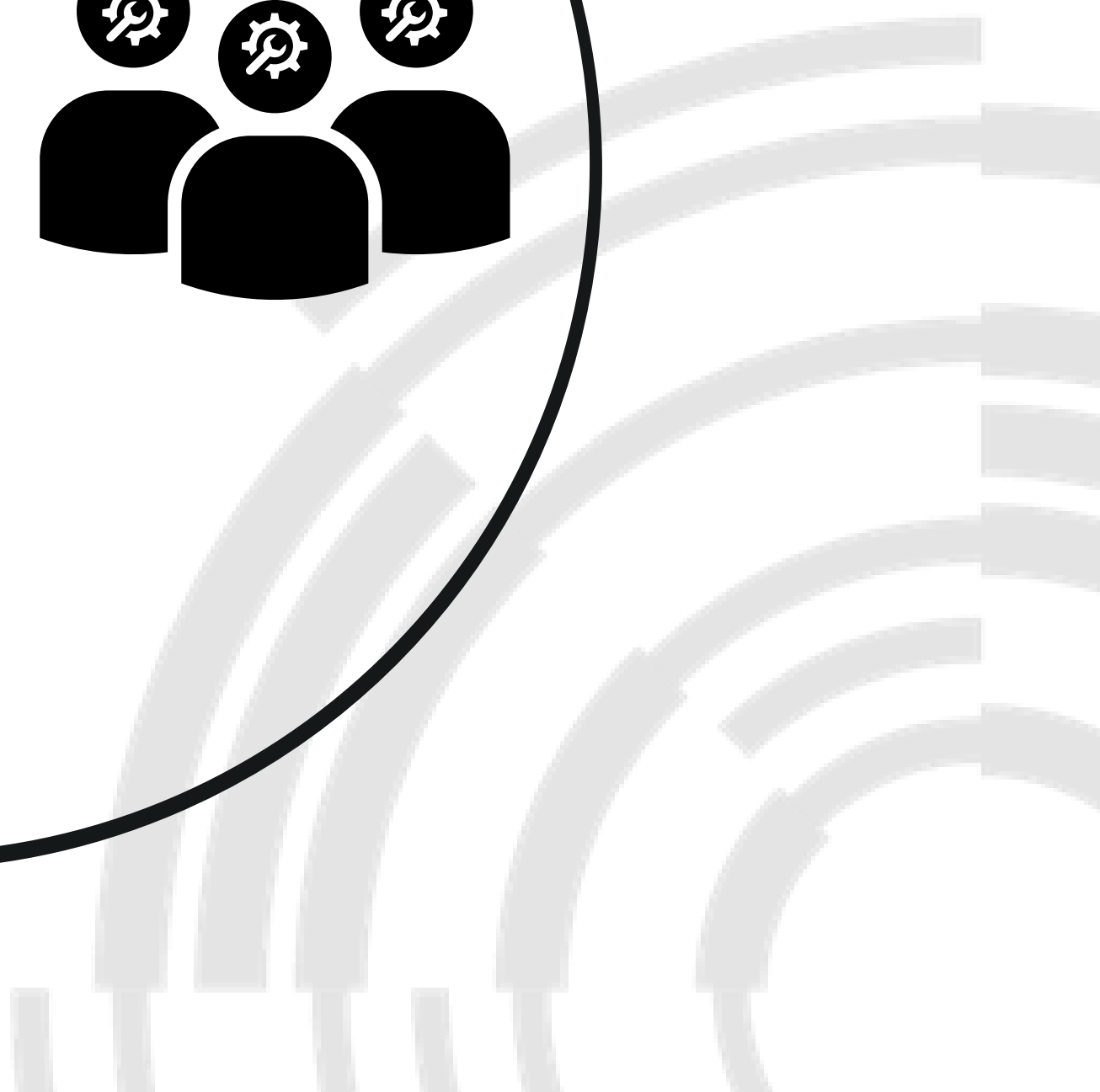
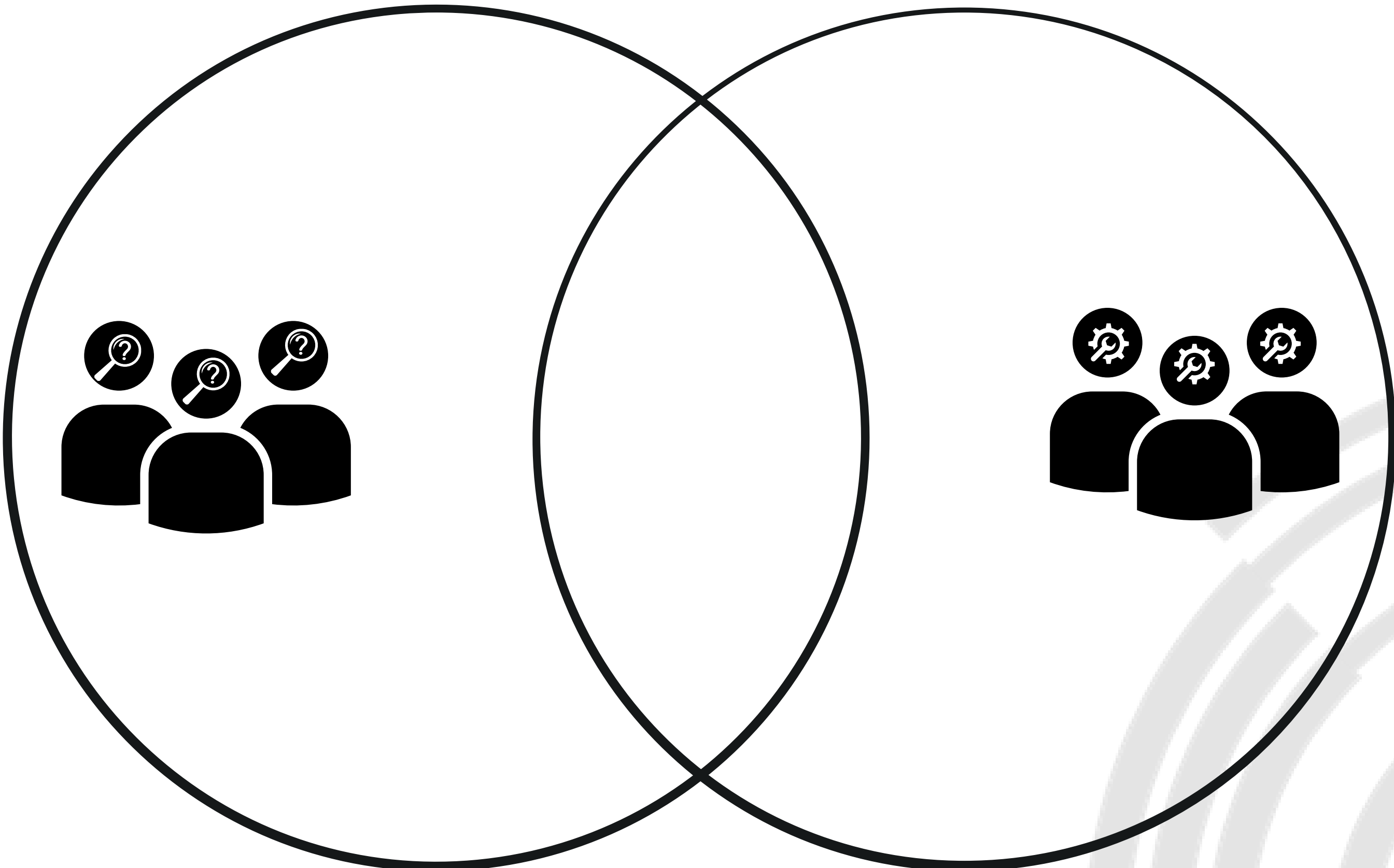


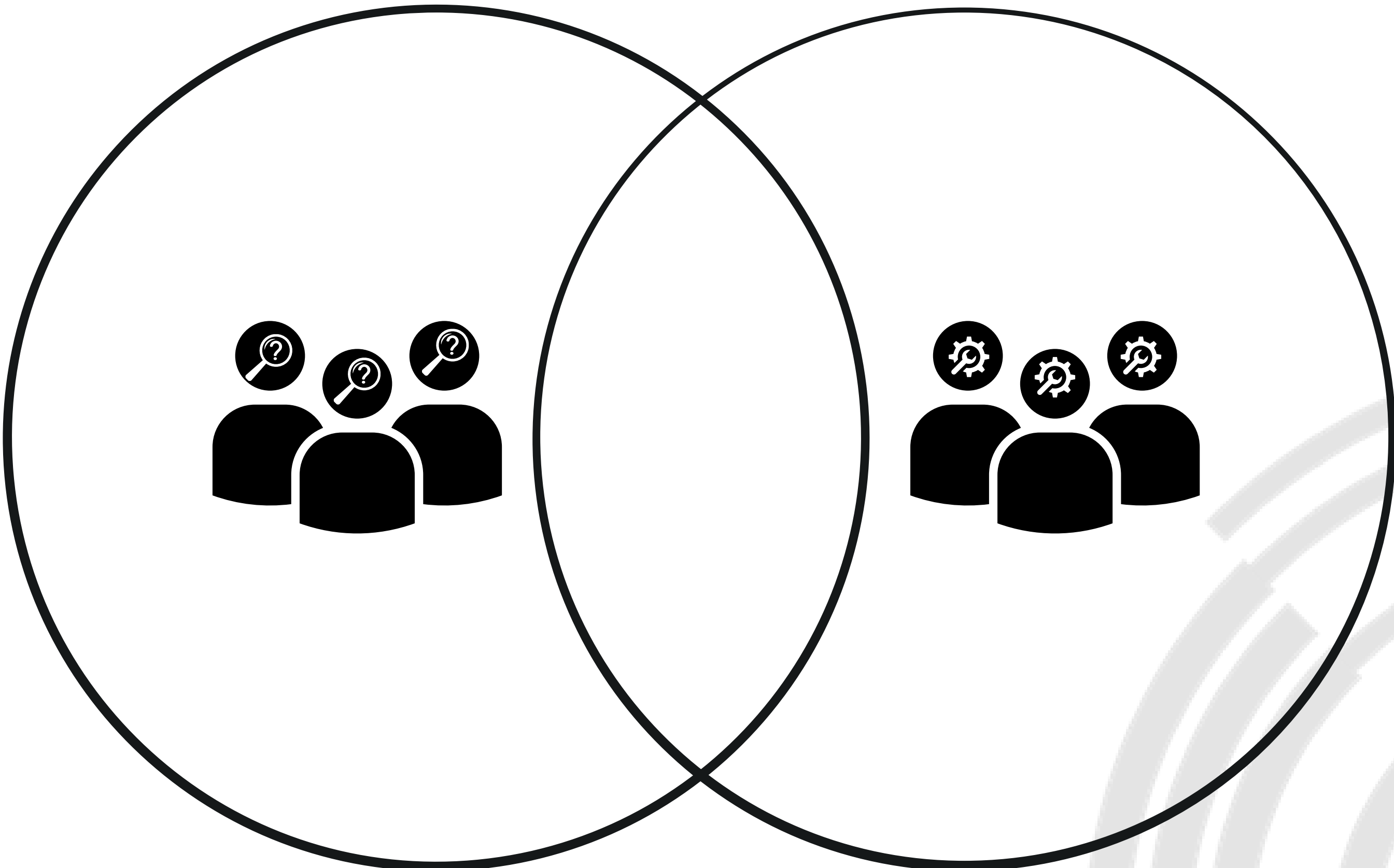
What is 'team-expertise'?

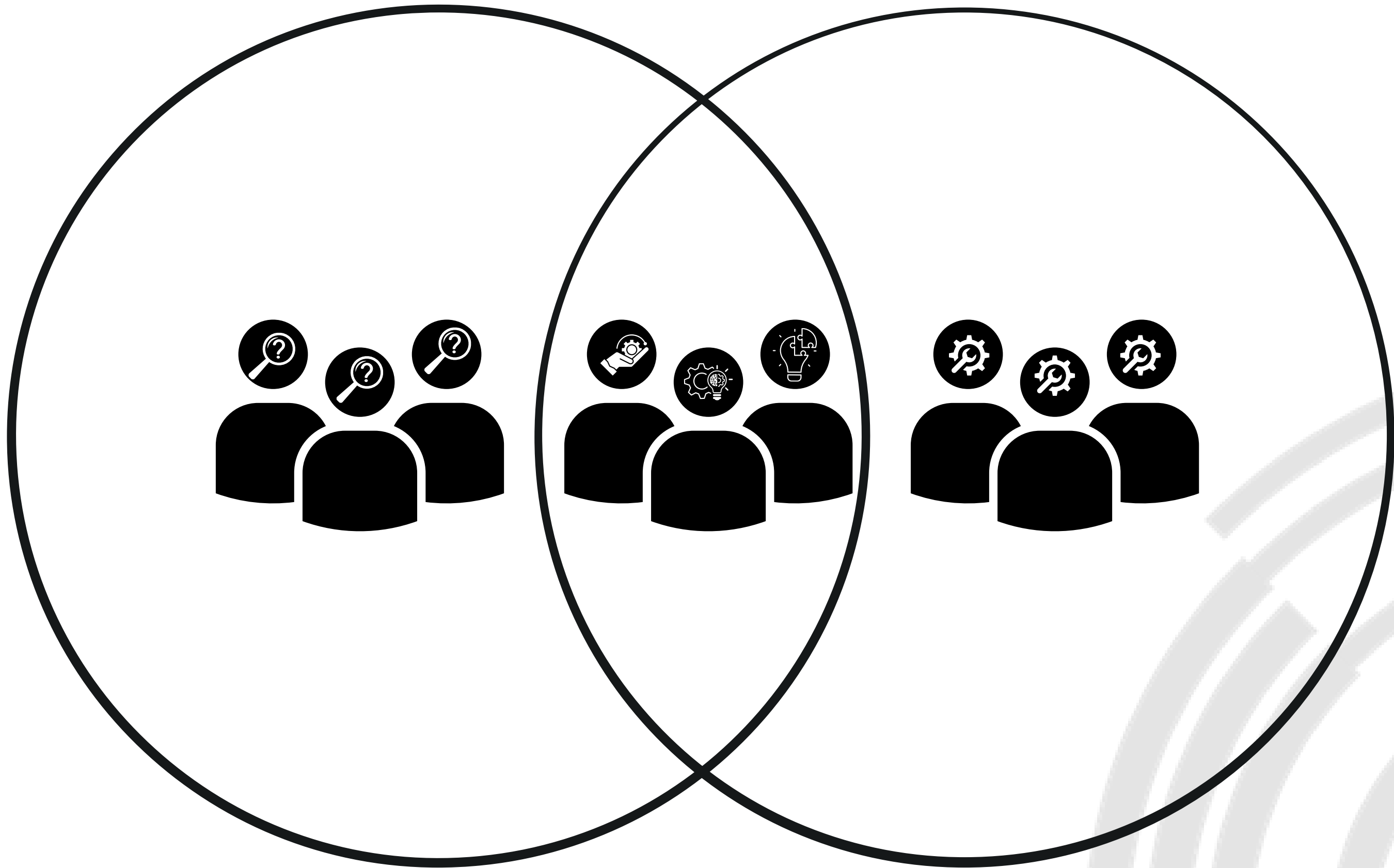
Team-expertise as infrastructure?

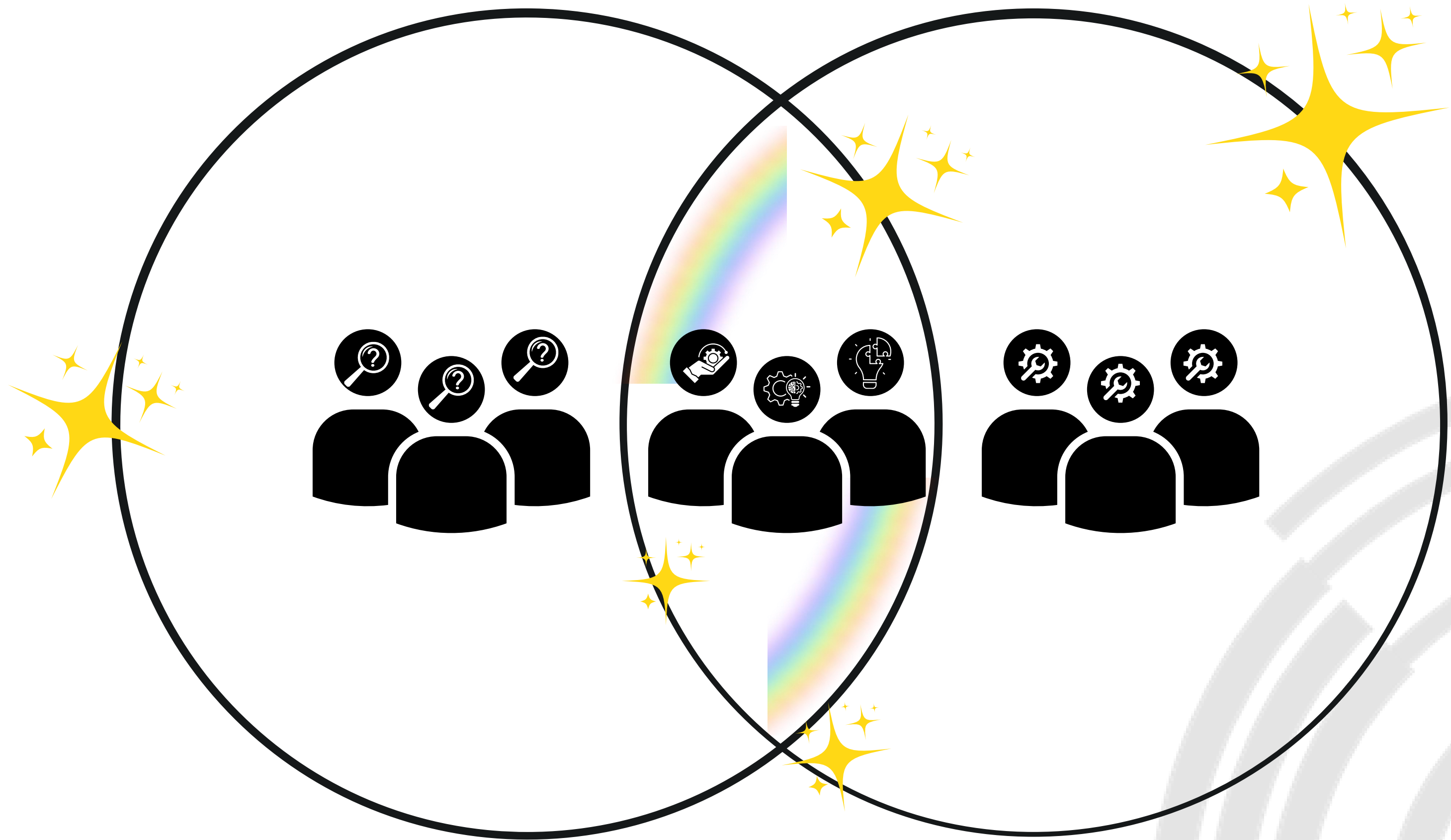
Team-expertise as infrastructure.

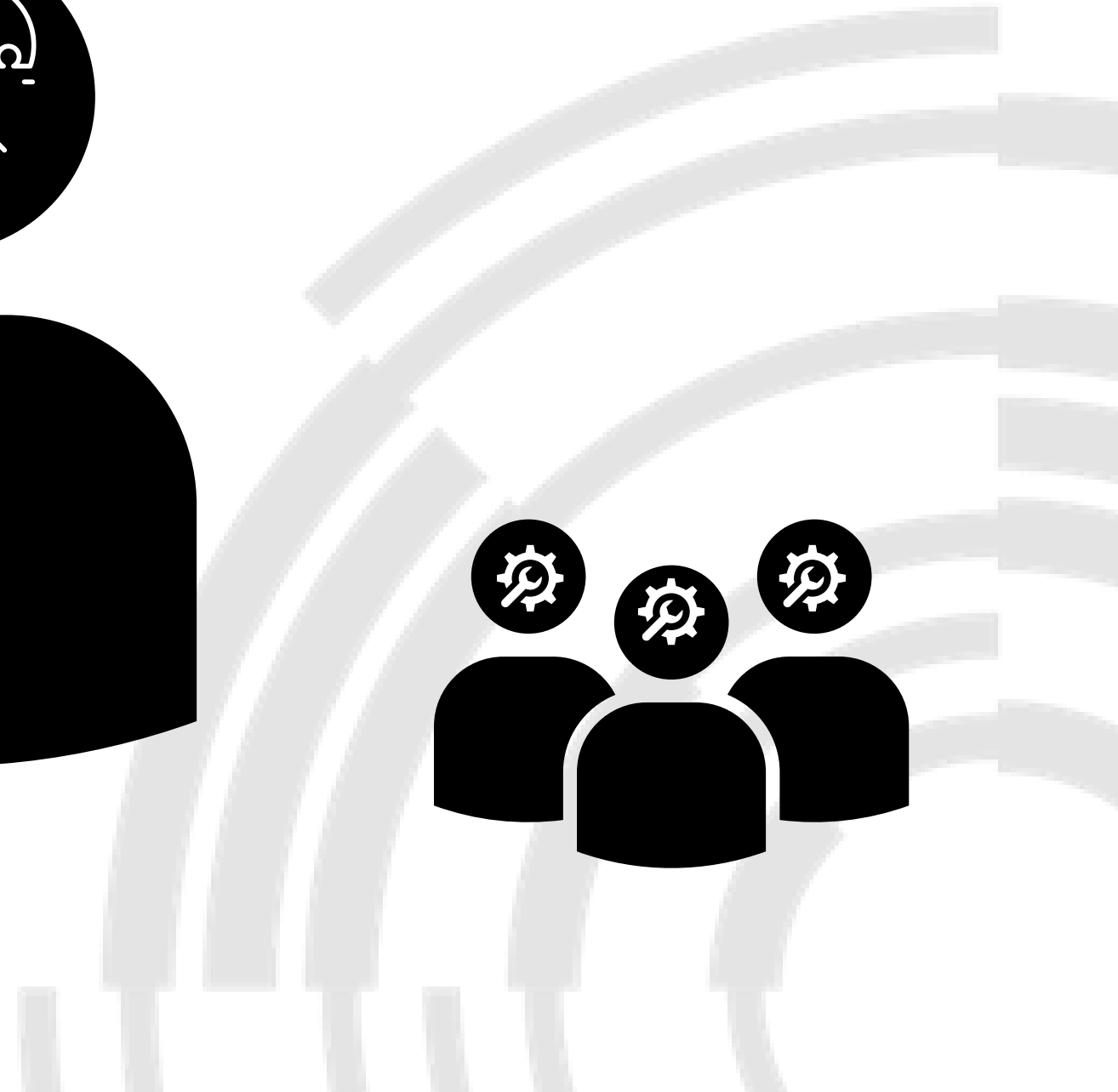
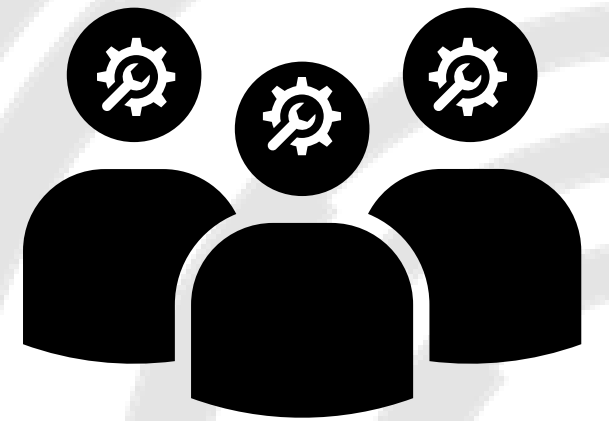
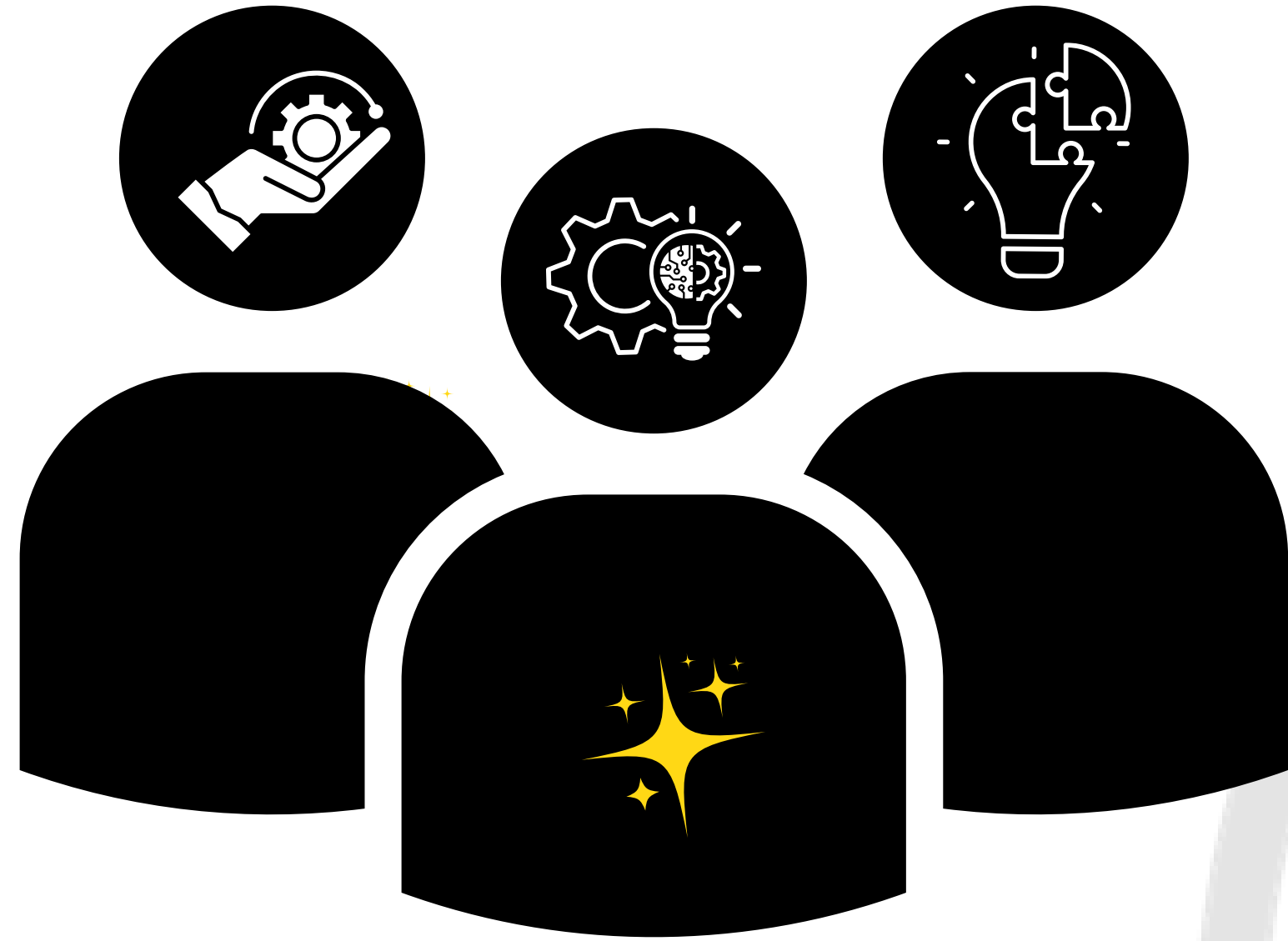
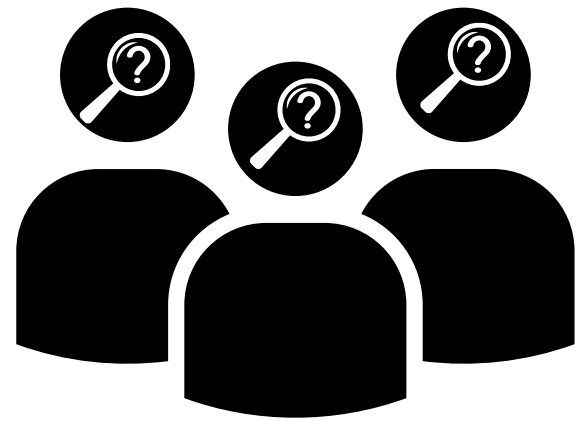








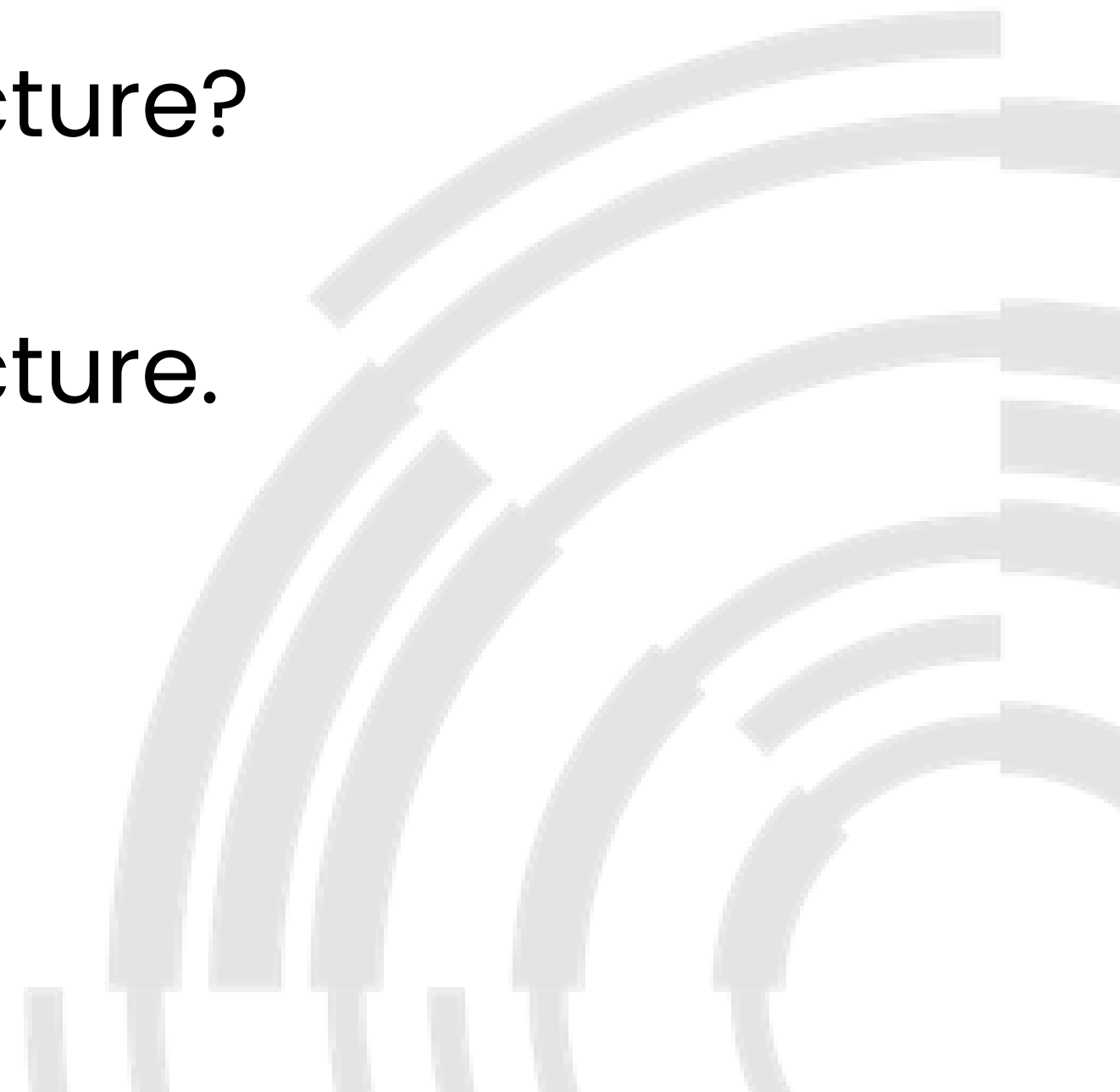




What is 'team-expertise'?

Team-expertise as infrastructure?

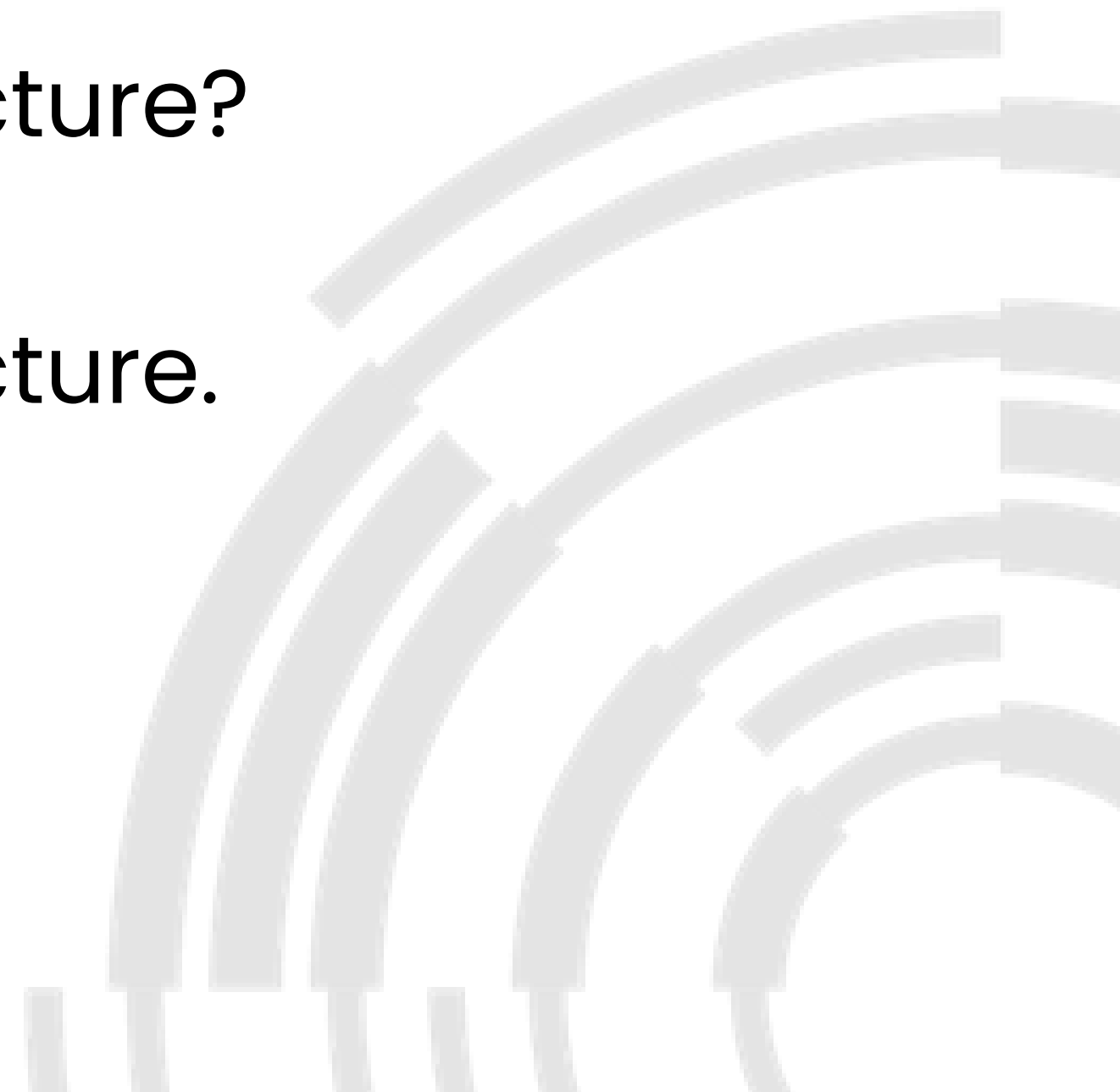
Team-expertise as infrastructure.



What is 'team-expertise'? = people

Team-expertise as infrastructure?

Team-expertise as infrastructure.



Star, S. L. (1999). The ethnography of infrastructure. *American behavioral scientist*, 43(3), 377-391.

Embeddedness

Reach or Scope

Built on an installed base

Becomes visible upon breakdown

Is fixed in modular increments, not all at once or globally

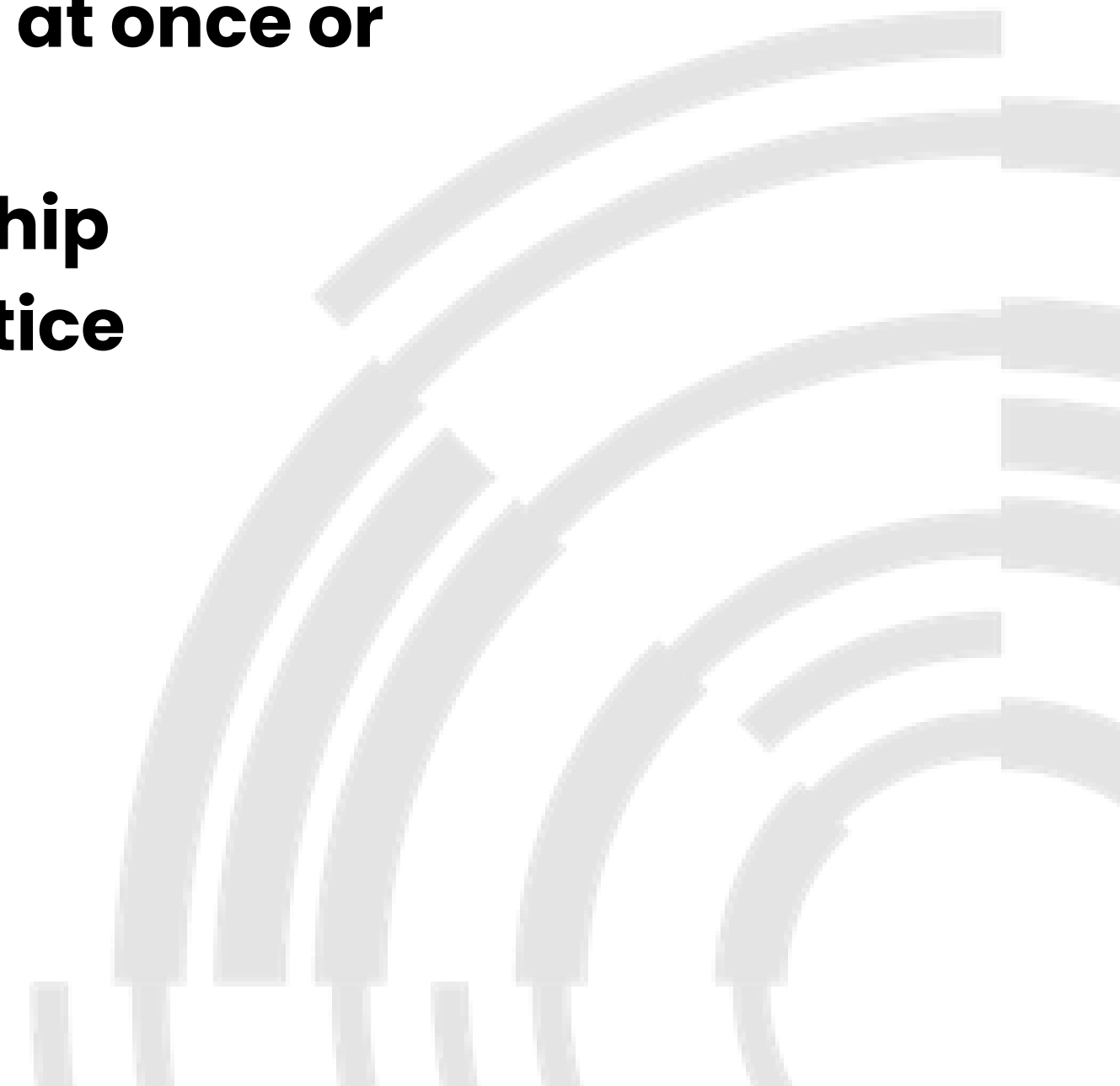
Learned as part of a membership

Links with conventions of practice

Embodiment of standards

Transparency

Star, S. L. (1999, pp. 381-382)



“[A breakdown is] the basis for a much more detailed understanding of the relational nature.”

Becomes visible upon breakdown

Is fixed in modular increments, not all at once or globally

Learned as part of a membership

Links with conventions of practice

Embodiment of standards

Transparency



“Changes take time and negotiation[...] simply no magic wand to be waved over the development effort.”

Becomes visible upon breakdown

Is fixed in modular increments, not all at once or globally

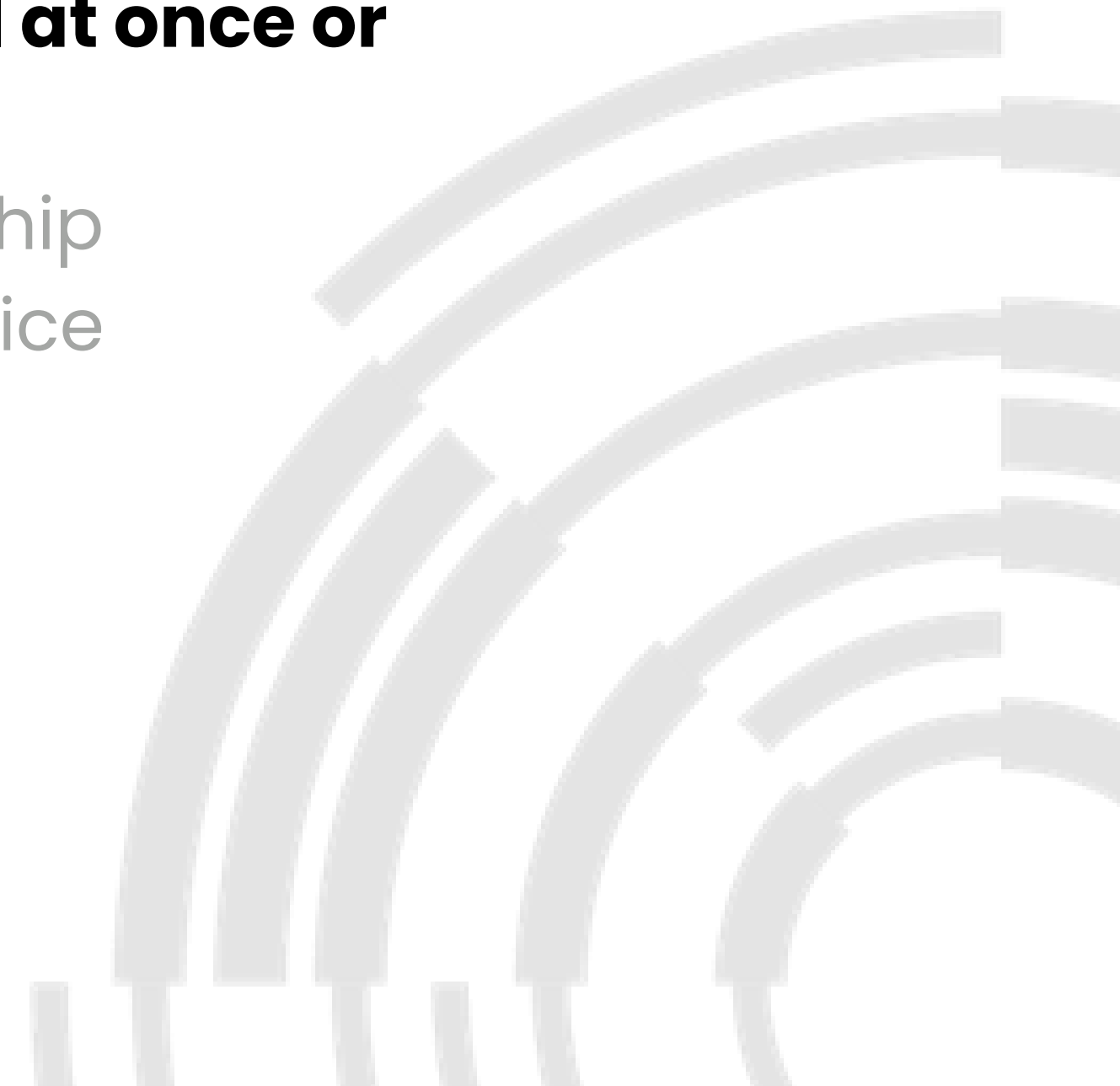
Learned as part of a membership

Links with conventions of practice

Embodiment of standards

Transparency

Star, S. L. (1999, pp. 381-382)



“[...]strangers and outsiders encounter infrastructure as a target object to be learned about.”

Becomes visible upon breakdown

Is fixed in modular increments, not all at once or globally

Learned as part of a membership
Links with conventions of practice

Embodiment of standards

Transparency

Star, S. L. (1999, pp. 381-382)



“Modified by scope and often by conflicting conventions[...]”

Becomes visible upon breakdown

Is fixed in modular increments, not all at once or globally

Learned as part of a membership

Links with conventions of practice

Embodiment of standards

Transparency

Star, S. L. (1999, pp. 381-382)



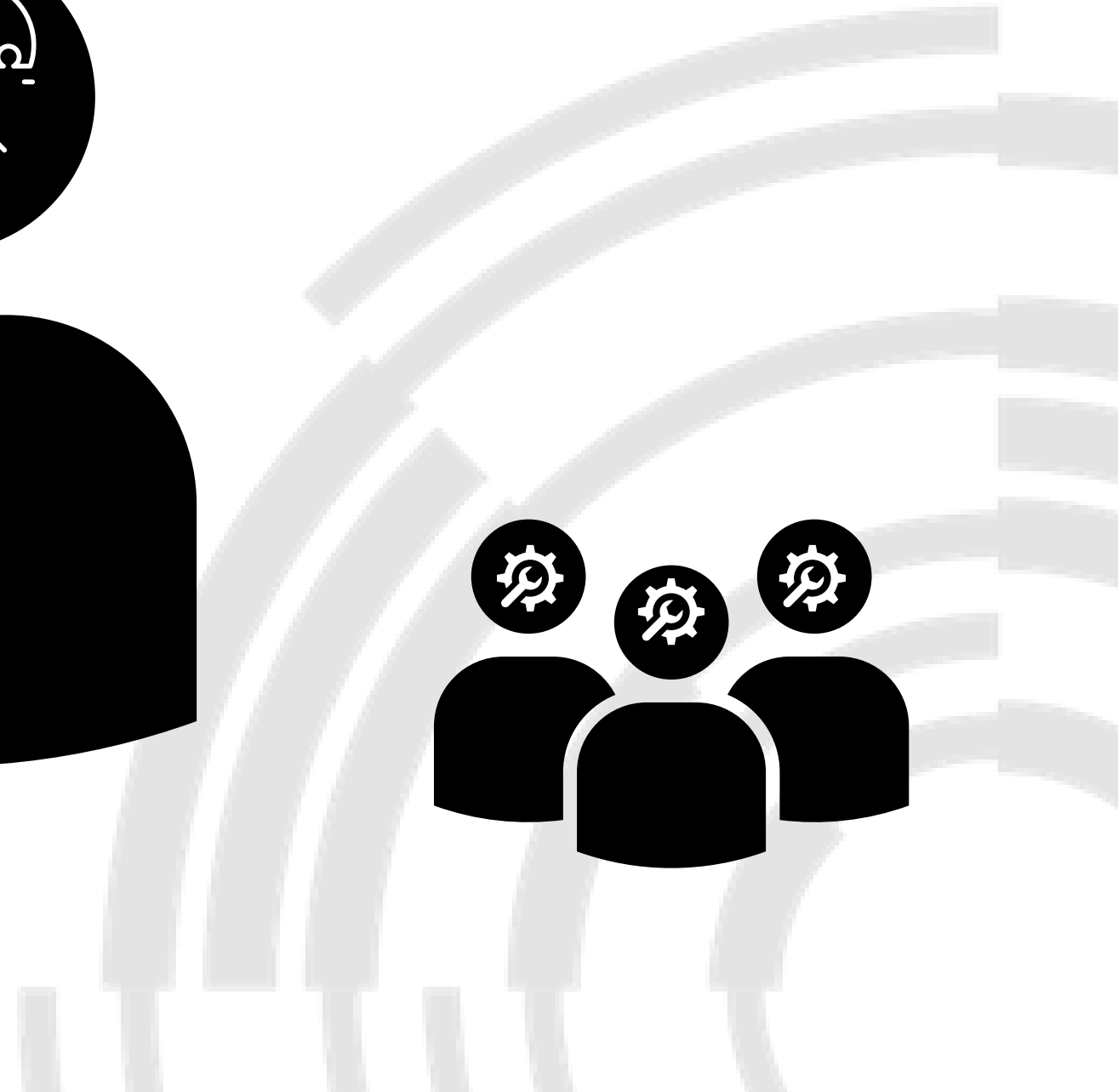
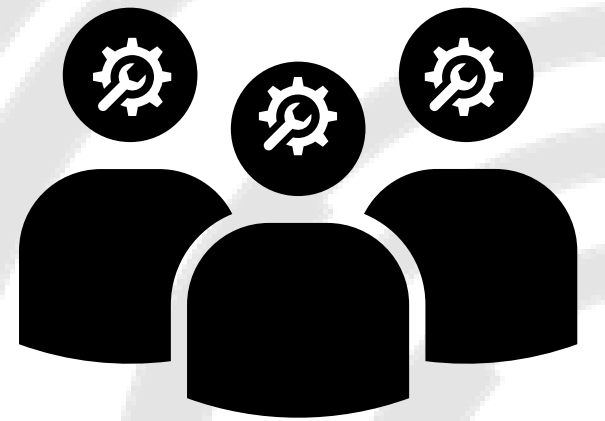
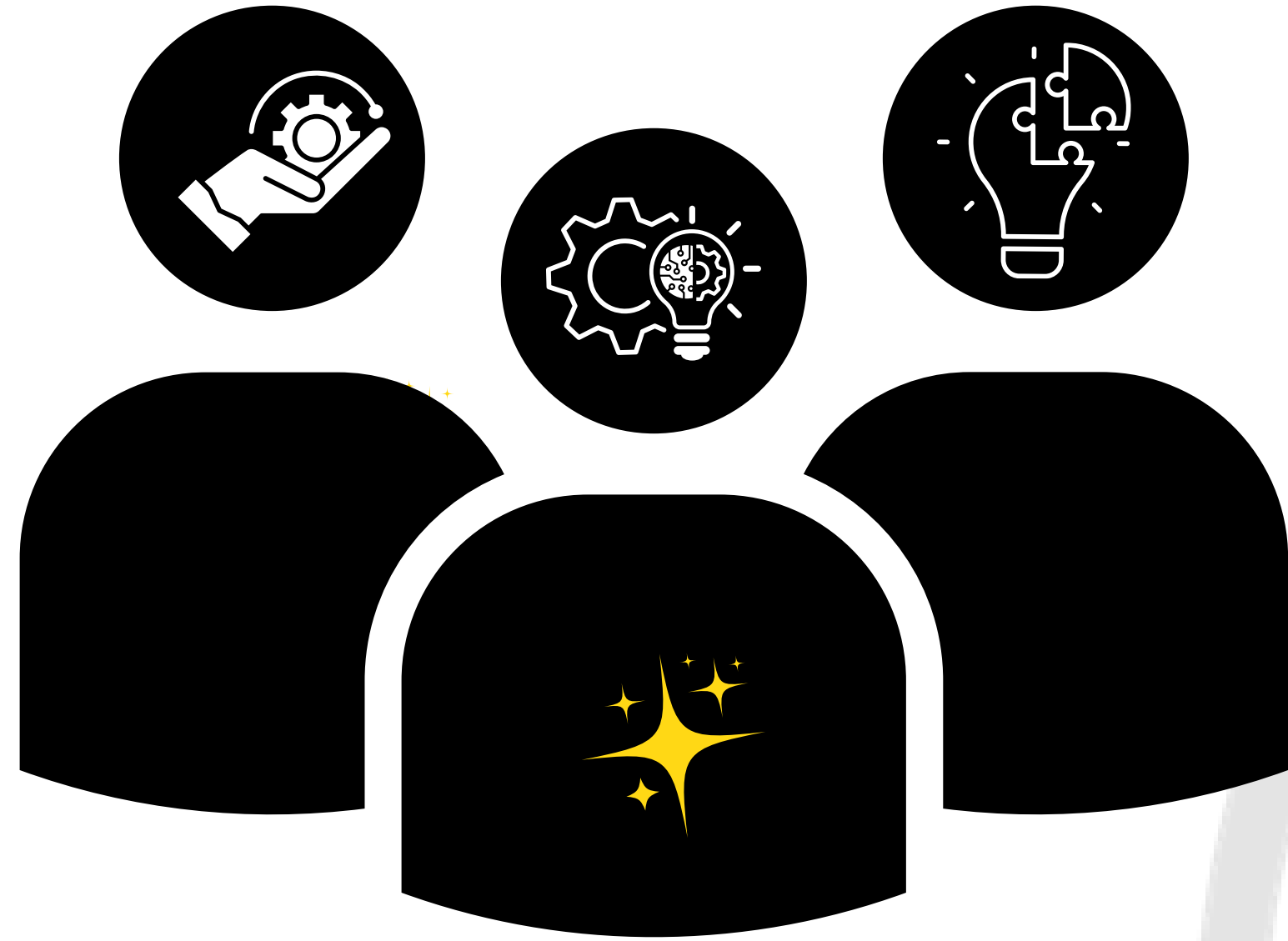
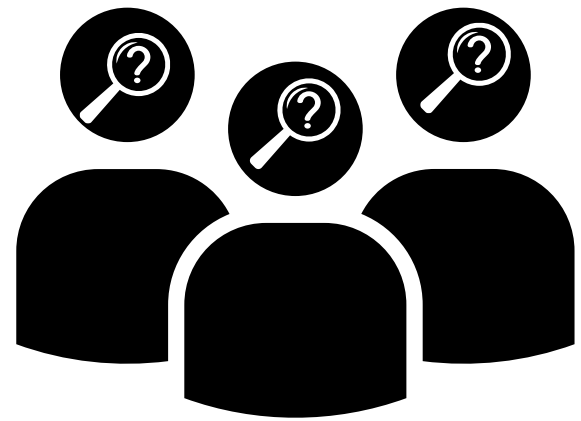
“[...]does not have to have to be reinvented each time or assembled for each task[...].”

Becomes visible upon breakdown
Is fixed in modular increments, not all at once or globally
Learned as part of a membership
Links with conventions of practice
Embodiment of standards

Transparency

Star, S. L. (1999, pp. 381-382)

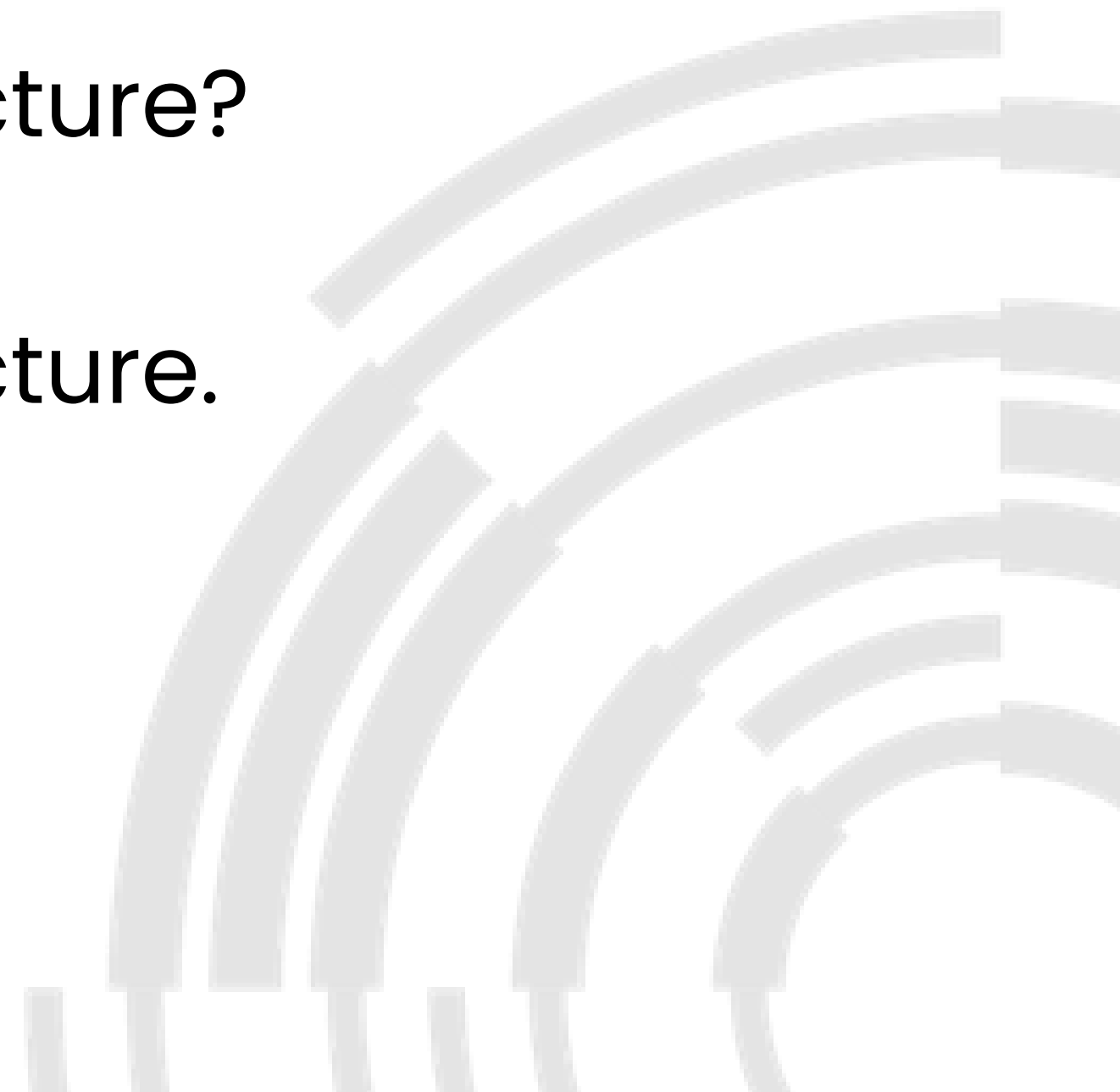




What is 'team-expertise'? = people

Team-expertise as infrastructure?

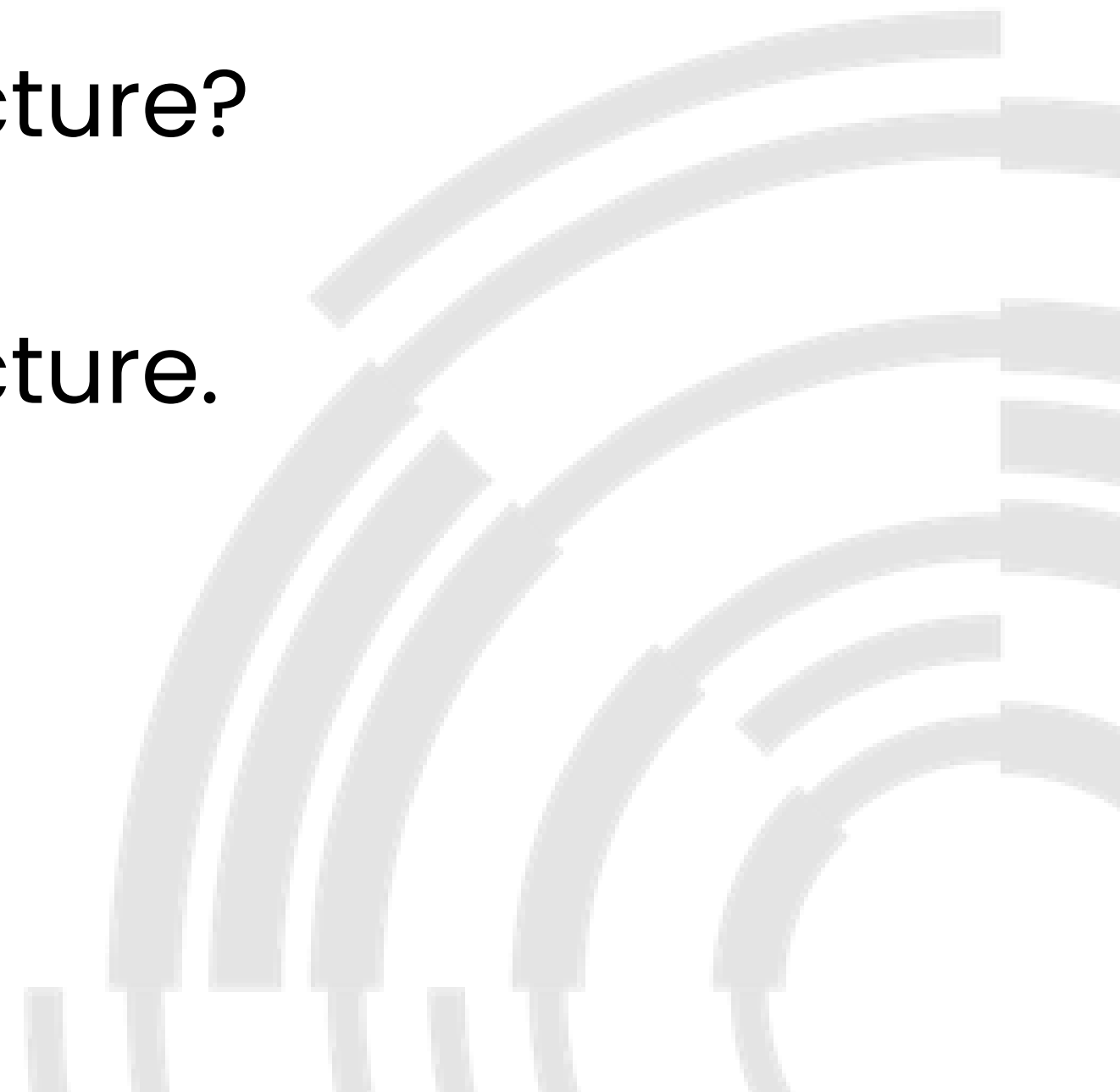
Team-expertise as infrastructure.



What is 'team-expertise'? = people

~~Team-expertise~~ as infrastructure?

Team-expertise as infrastructure.

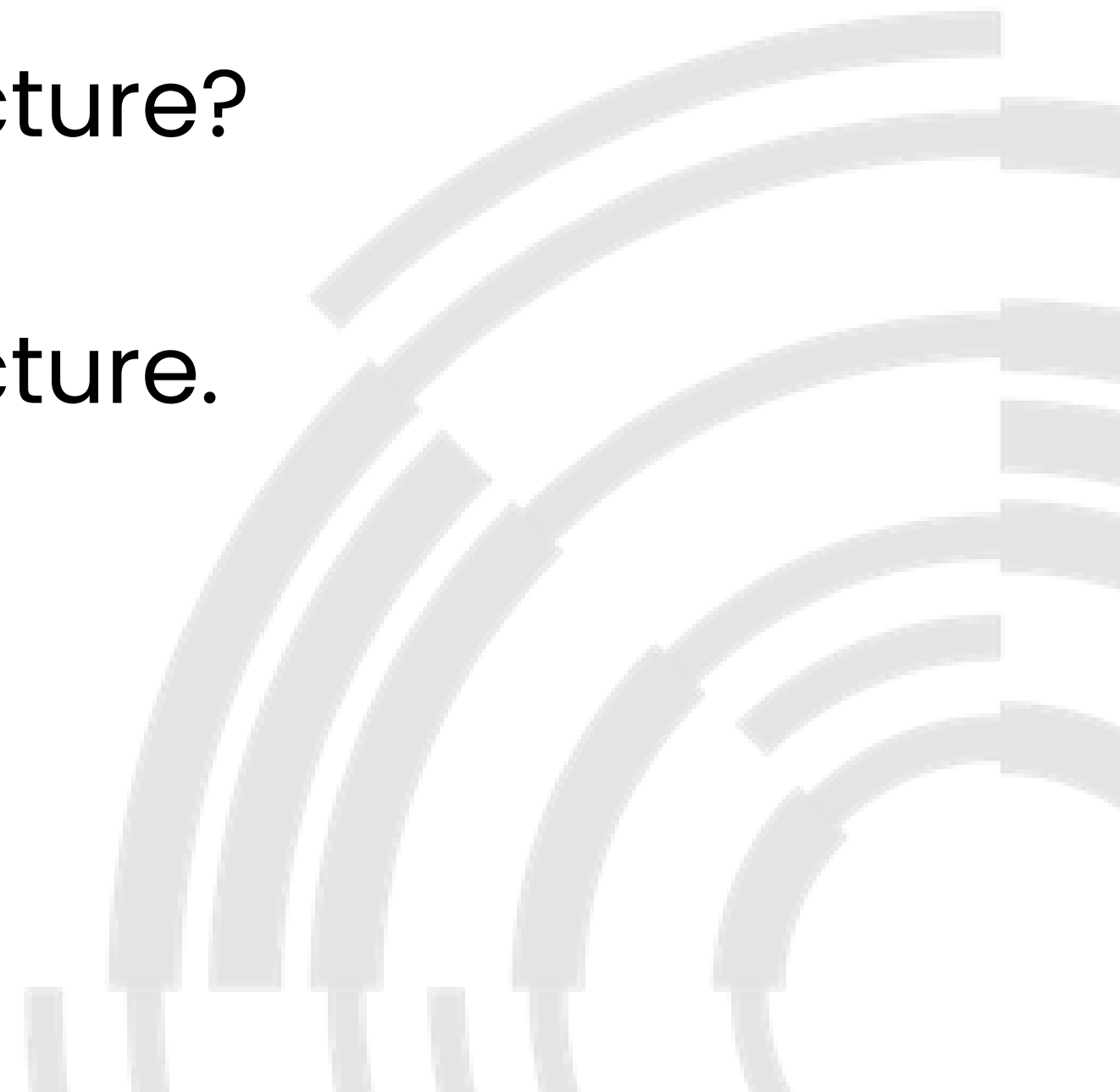


People

What is 'team-expertise'? = people

~~Team-expertise~~ as infrastructure?

Team-expertise as infrastructure.

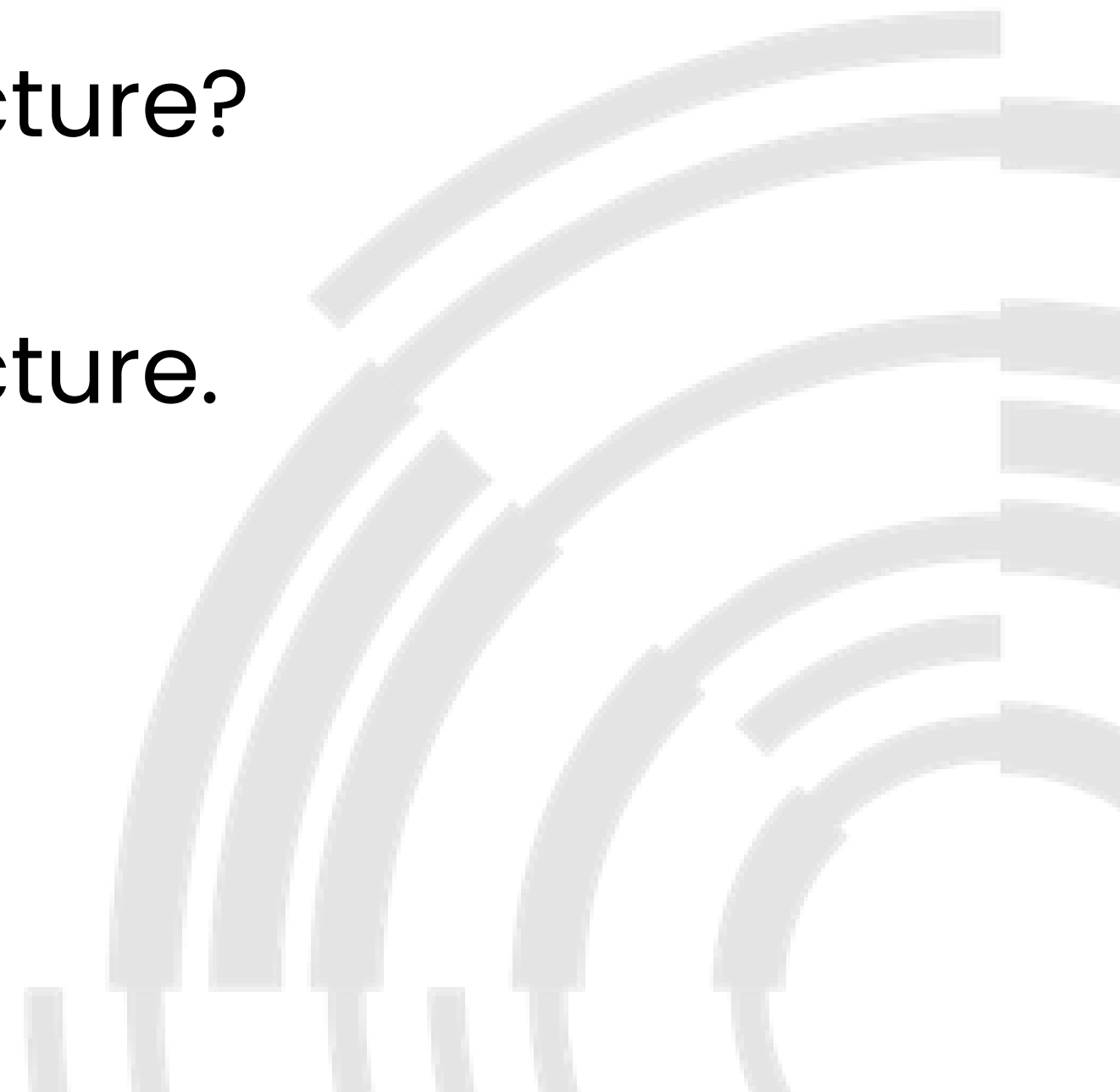


People

What is 'team-expertise'? = people

~~Team-expertise as infrastructure?~~

~~Team-expertise as infrastructure.~~



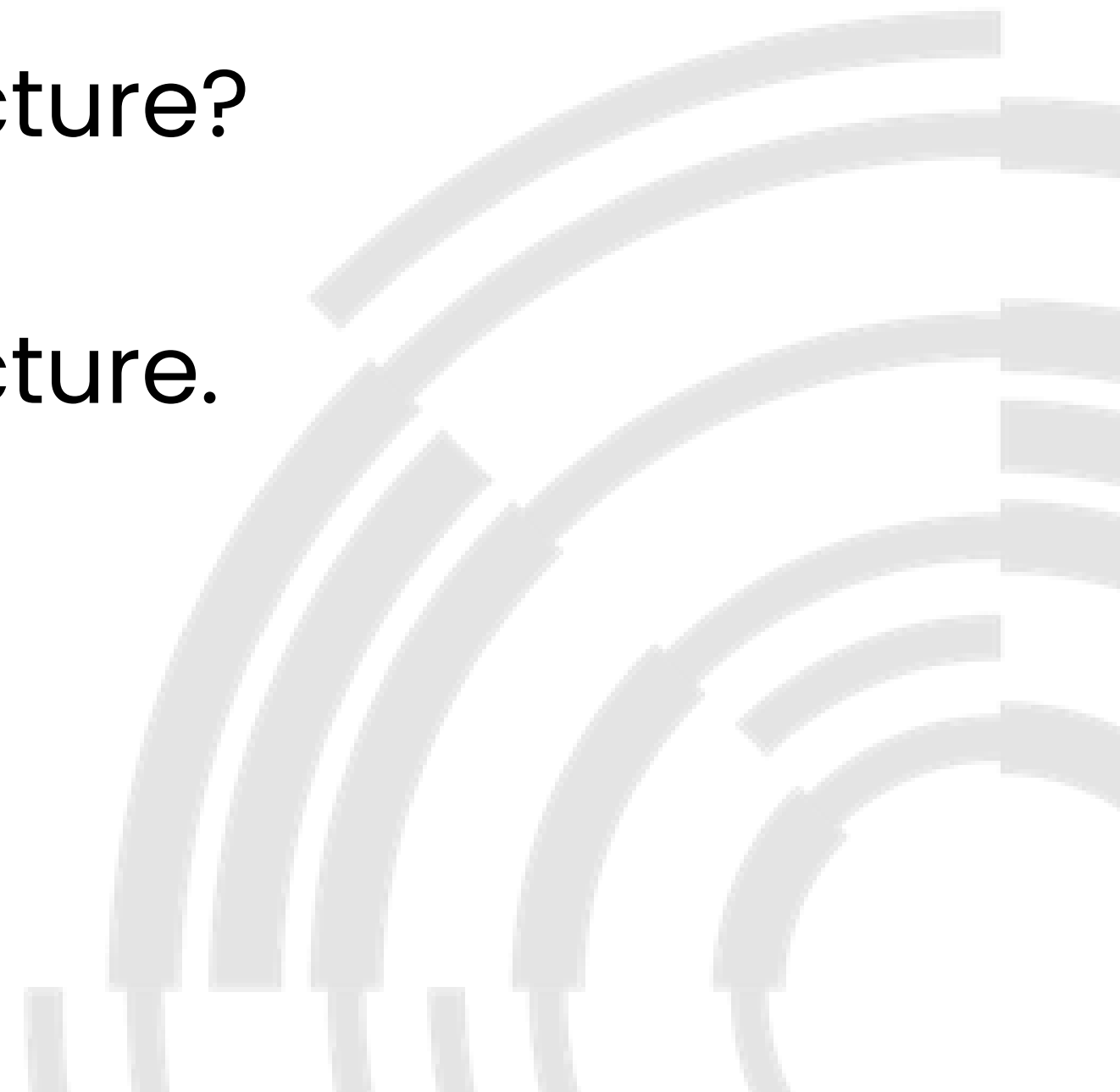
What is 'team-expertise'? = people

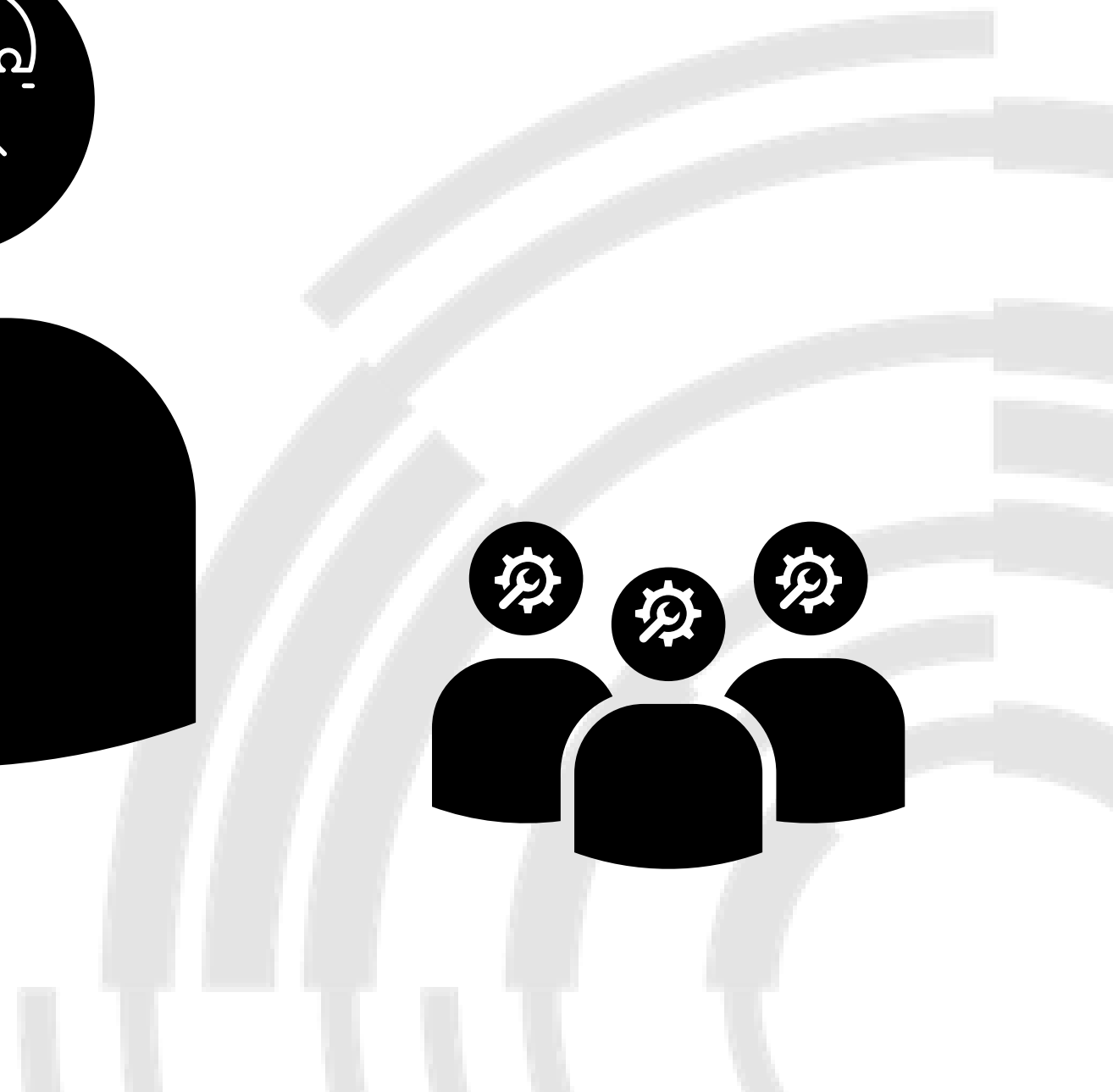
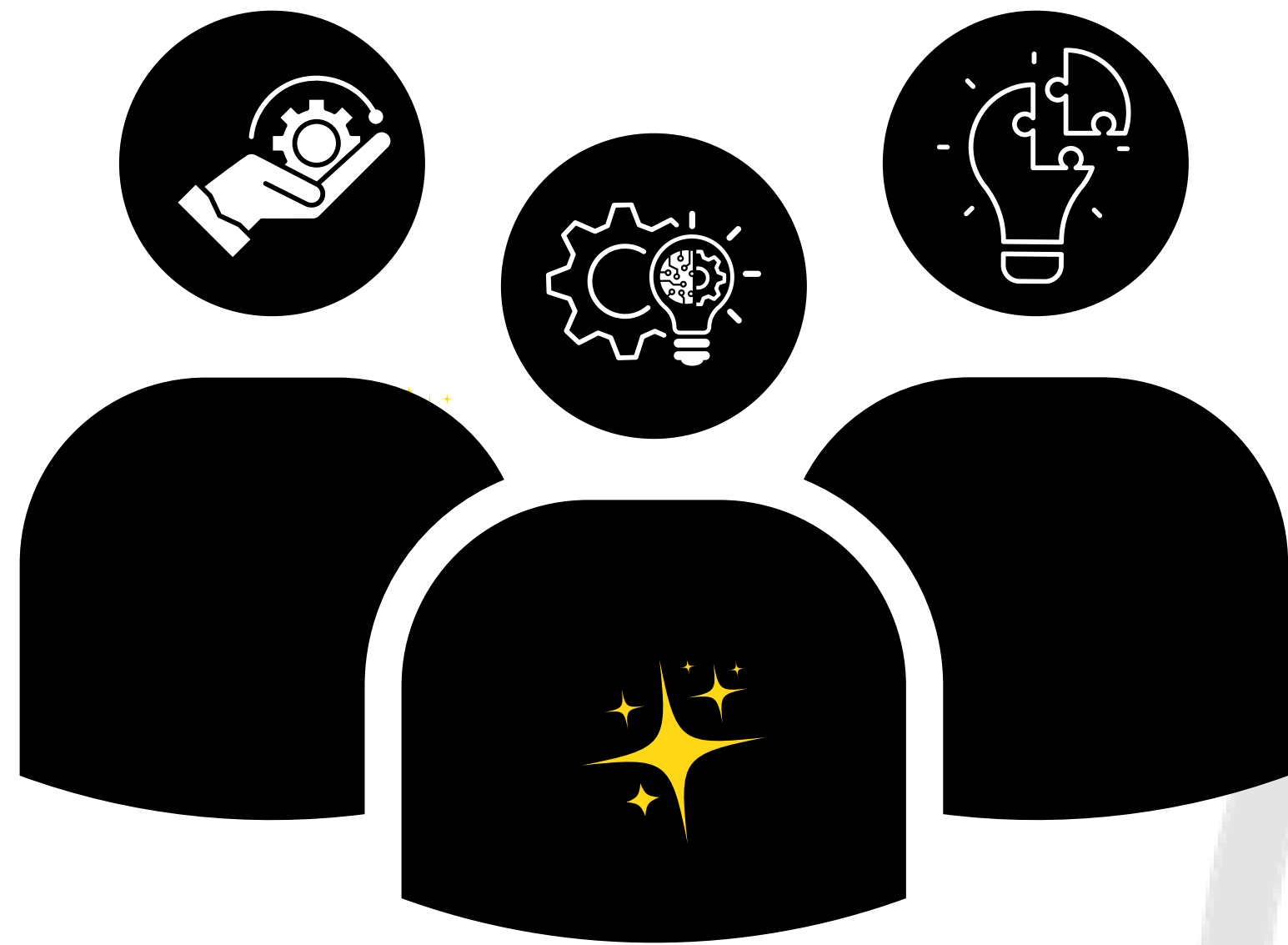
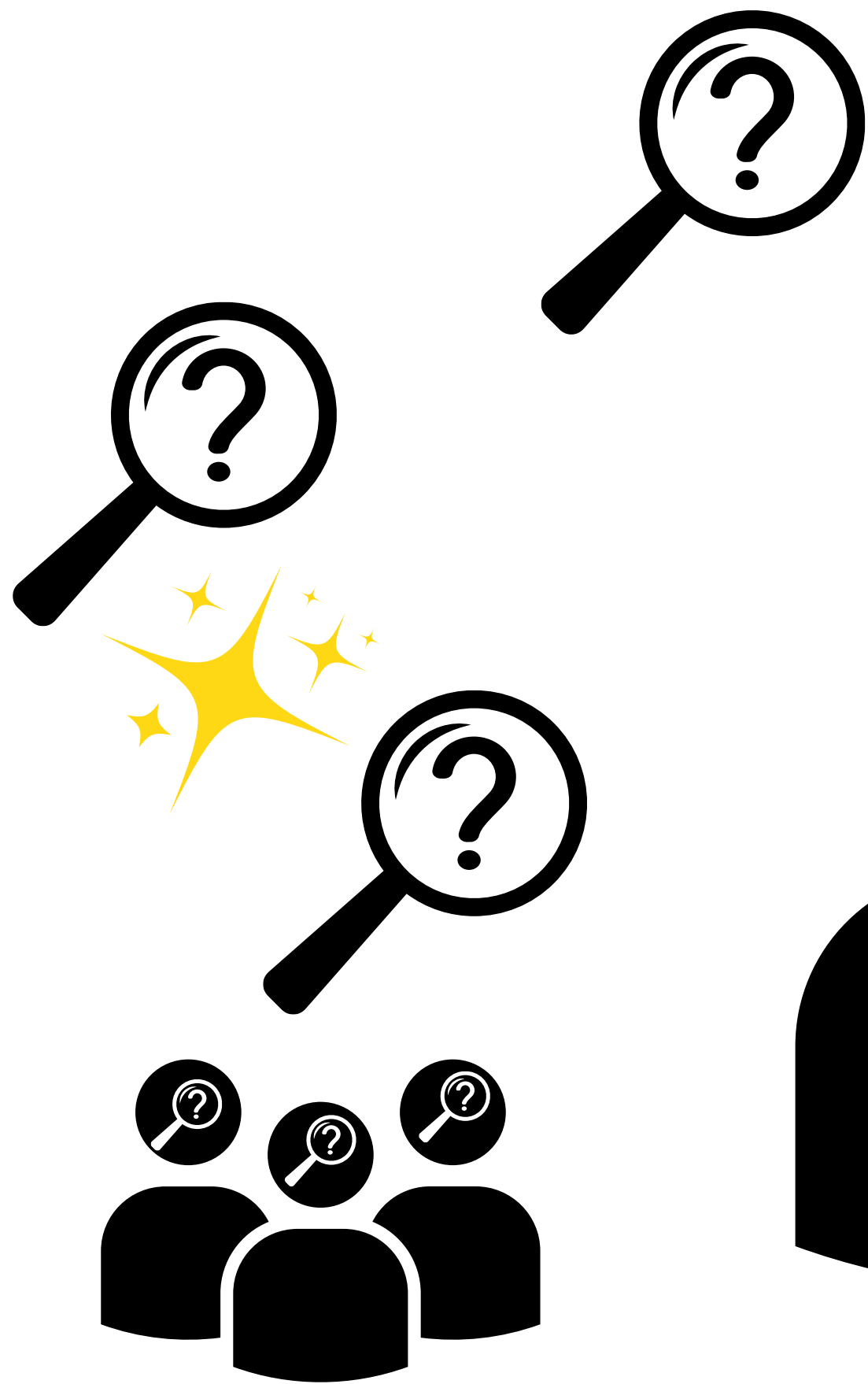
People

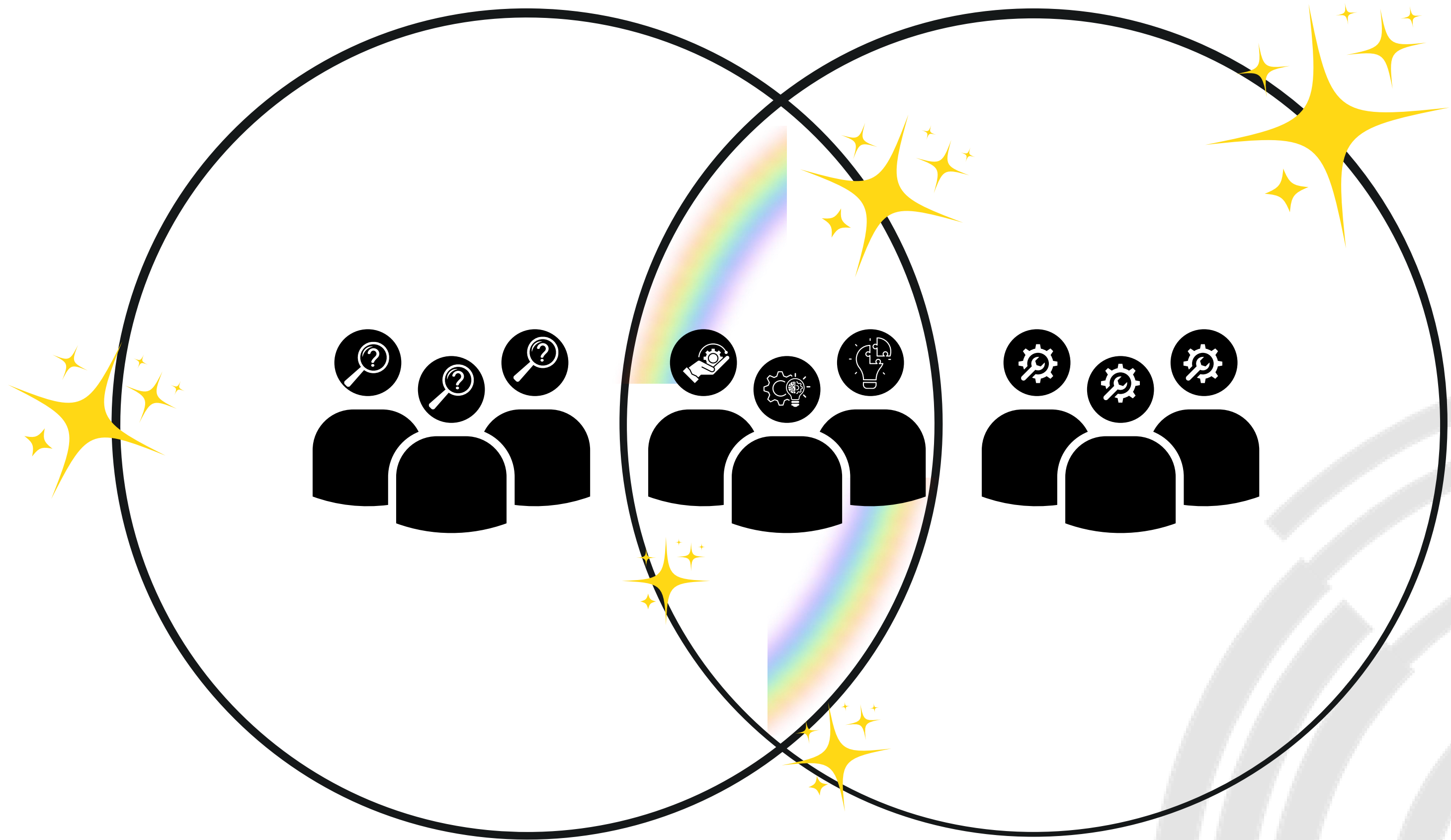
~~Team-expertise as infrastructure?~~

People

~~Team-expertise as infrastructure.~~







Thank you

Evelyn Ansell

Sam Hames

Queensland Cyber Infrastructure Foundation

Language Data Commons of Australia

The University of Queensland

eve.ansell@qcif.edu.au

s.hames@uq.edu.au

