

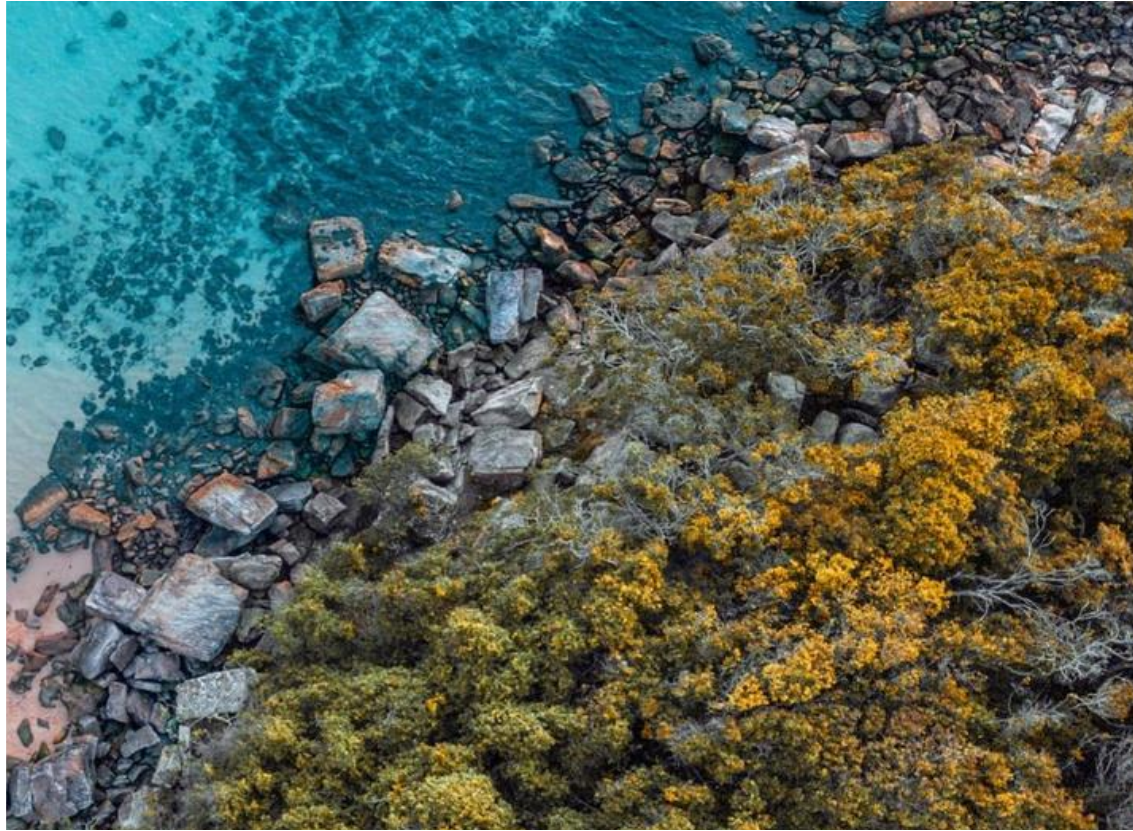
Research Link Australia: Connecting Research, Industry and Government Through Information

Lyle Winton, Jo Dalvean, Frankie Stevens, Ivan Silva-Feraud, Mingfang Wu



ACKNOWLEDGEMENT OF COUNTRY

We acknowledge and celebrate the First Australians on whose traditional lands we meet, and we pay our respect to their elders past, present and emerging.



The RLA team



Lyle Winton



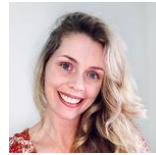
Liz Woods



Vikas Chinchansur



Enming Zhang



Darcelle Malby



Leo Monus



Nima Kazi



Gnana Bharathy



Mingfang Wu



Frankie Stevens



Jo Dalvean



Amir Aryani

Linking research, government and industry



Industry: How can I find?

- Innovative ideas and solutions R&D capability and
- research relevant to my business Researchers as
- potential collaborators Specialist facilities or skills
-

Research: How can I find?

- Business sponsor for my future research
- Industry user of my commercial ready research
- Business partners for application research under various funding schemas Partner for
- industrial placement

Research Link Australia Project Approach

Nov
2022

Consultation

- 48 formal consultations and interviews Research sector,
- Government, Facilitators
- Collected 70+ use cases
- Derived 4 user stories

May
2023

Co-design Strategy development

- 4 workshops to design a fit for purpose service
- ~40 people across 10 externals on advisory committee

Aug
2023

Platform dev & ops Information roadmap Partnering

- Prototype -> MVP, an ARDC service
- Industry engagement consult 15 user experience sessions Test-project partners, 26 concept briefs from 19 partners, inc 40 organisations Resulting in 5 projects with 13 partners (now)

May
2024

Research Link Australia: A new addition to ARDC Services



ARDC Nectar Research Cloud

Your national research cloud – start your 6-month trial today

Explore >



ARDC Research Data Australia

Find, access, reuse and attribute data from Australian research organisations.

Explore >



ARDC Research Vocabularies Australia

Share and combine your data with confidence using Research Vocabularies Australia.

Explore >



ARDC Research Link Australia

Bridging the information gap between research, industry, business and government for impactful innovation

Explore >



Health Data Australia

Find and share health data for research.

Explore >



ARDC Community Data Lab

Digital tools and guides for researchers accessing and using data from libraries, archives, museums and...

Explore >



ARDC Identifier Services

We provide a range of services for research organisations to create and manage persistent identifiers...

Explore >



ARDC Advisory Services

Supporting your data and digital research challenges

Explore >

<https://ardc.edu.au/services/>

What is Research Link Australia



Research capability discovery portal

The RLA portal enables the discovery of R&D capability and collaboration capability.



Data reuse demonstrator

An application that demonstrates data that are collected once, can be reused and linked to give a big picture of research and research collaboration landscape.



Driver to improve research info. management capability

Data/information management capability is lifted through contributing data to RLA.

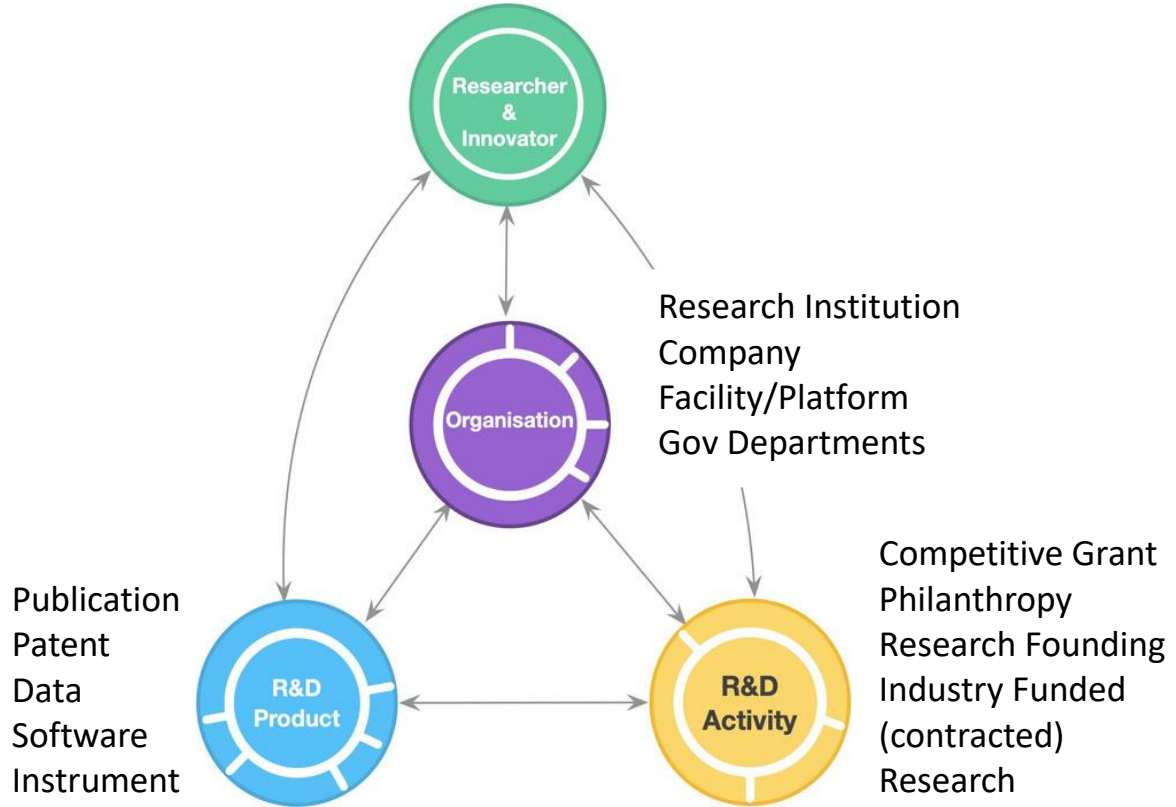


National information infrastructure

RLA is a national information infrastructure, aiming to uplift the entire ecosystem and to boost the success and capacity of other programs and services that facilitate research-industry collaboration.

Research capability & collaboration discovery portal

Current product (MVP) focuses on **research capability**, esp. **capability & desire to collaborate**, information that serves as a bridge between academic research and industry applications



Research capability discovery portal

The screenshot displays the Research Link Australia portal interface. At the top, there are navigation links for 'Home', 'About', and 'Feedback', along with a newsletter subscription and contact options. A search bar is prominently featured with the text 'Researcher - artificial intelligence' and a search button. Below the search bar, there are filters for 'Current Selection', 'Researchers (8048)', 'Funded Activities (1565)', and 'Organisations (1913)'. The main content area shows a list of researchers, with the first three being Tim Miller, Enrico Coliera, and Karin Verspoor. Each researcher profile includes their name, affiliation, ORCID profile link, number of publications, grants awarded, and top research topics. For example, Tim Miller is from the University of Queensland and has 15 publications and 4 grants awarded. Enrico Coliera is from Macquarie University and has 277 publications and 6 grants awarded. Karin Verspoor is from RMIT University and has 168 publications and 7 grants awarded. The interface also includes a 'Filter by Field of Research' section with various scientific fields and a 'Filter by Socio-Economic Objective' section with various research objectives.



As an application developer of an agri-business facilitator/intermediary, I would like to know who are the top five researchers from my state in this research area of internet of things, who can help to optimise our network to monitor soil, water, crops, pastures and animals, etc; so that we can make better decisions.

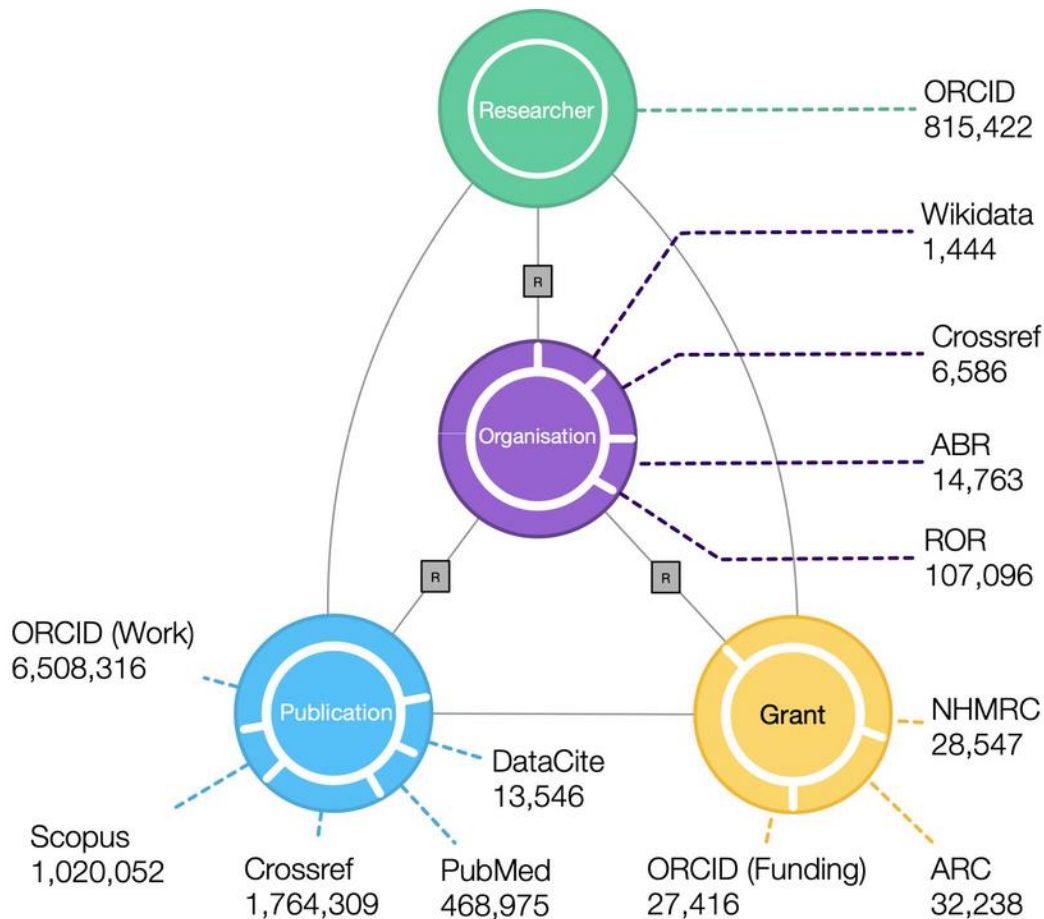


As a research group, we have researched this nanodisk, our clinical research shows nanodisk can stick to the surface of a tumor longer than other shaped disks and thus provide efficient transfer to therapeutic drugs to the tumor. I want to find out who are the top five manufacturers in Australia with whom we can discuss future production opportunities.

Research Link Australia: A demonstrator of data reuse

RLA is an application that showcases how data, collected from various sources, can be reused and harmonised to provide a view of research landscape and collaboration networks.

A key component of the data is persistent identifiers (PIDs) such as ORCID. RLA is therefore operating in tandem with the Australian National PID Strategy.



Research Link Australia content roadmap

RLA will incorporate more accurate and comprehensive data to improve the platform's utility and support more use cases.

| RLA Minimum Viable Product (MVP) Service Released in May 2024, the RLA MVP service is offering access to information about the following: | RLA Evolution From June 2024, we'll continuously increase the number of data providers and enhance the diversity of data, data quality, and linkages. New information sources may include: |
|--|--|
| <p>Publications</p> <ul style="list-style-type: none">■ Crossref■ Scholix■ Pubmed■ ORCID <p>Researchers</p> <ul style="list-style-type: none">■ ORCID <p>Organisations</p> <ul style="list-style-type: none">■ ROR■ ABR■ Crossref <p>Grants</p> <ul style="list-style-type: none">■ ARC■ NHMRC■ ORCID | <p>Business profiles and R&D activities</p> <ul style="list-style-type: none">■ GrantConnect and AusTender■ University RMS■ ARC/NHMRC/CRC/RDC■ Publication <p>Intellectual properties</p> <ul style="list-style-type: none">■ Patent: Australia and International <p>Facilities</p> <ul style="list-style-type: none">■ Selected NCRIS facilities■ Selected (State) government innovation centres <p>Instruments</p> <ul style="list-style-type: none">■ NCRIS funded instruments■ University instrument catalogue <p>Grants and projects</p> <ul style="list-style-type: none">■ Philanthropy research funding■ Selected CRCs & RDCs■ Some industry funded research |

Research Link Australia: National information infrastructure

“RLA provides an (pre-competitive) information infrastructure that can be used to underpin the development and operation of other platforms and services that facilitate research-industry collaboration, providing benefits as an information aggregation and dissemination facility.”

- RLA strategic framework

The screenshot displays the Swagger UI for the RLA Portal API. At the top, it shows the Swagger logo and the text 'RLA Portal' with a version indicator 'v0.0.1'. Below this, there are links for 'Research Link Australia - Portal (Development)', 'ARDC - Website', and 'Send email to ARDC'. A 'Servers' dropdown menu is set to 'Development'. The main content area is titled 'search-controller' and lists two endpoints:

- GET /search/{target}/{id}**: Get a record or document by ID and target type.
- GET /search/researchers**: Get all researchers, based on various combinations of search criteria.

A description for the second endpoint states: 'This API returns the list of researchers from elastic search, based on input search criteria.' Below this, a 'Parameters' section is shown with a 'Cancel' button. The parameters table is as follows:

| Name | Description |
|---------------------|---|
| value | Value for the attribute. Defaults to empty string "". |
| string | artificial intelligence |
| filterQuery | filterQuery - must be comma separated (Example: summary.forSubjectCodes:31.summary.aeoSubjectCodes:1006.currentOrganisationName:Australian National University.countryCodes:au.dateCodes:act). Defaults to "" if not provided. And filterQuery only works with attribute: all-fields. |
| string | filterQuery |
| pageNumber | 'Page Number' of Search Results. Starts from 1. Defaults to page number 1 |
| integer (int32) | pageNumber |
| pageSize | 'Page Size' is number of results in one Page. Defaults to page size of 10. Maximum limit is 50 for Swagger-UI requests and 250 for CURL / Other kind of requests. |
| integer (int32) | 50 |
| advancedSearchQuery | Advanced Search Query Options - must be comma separated (Example: research-topic:Biological Sciences.firstName:David.lastName:Edwards.publications.title:geospatial). Defaults to "" if not provided. |
| string | advancedSearchQuery |

At the bottom of the parameters section, there are 'Execute' and 'Clear' buttons.

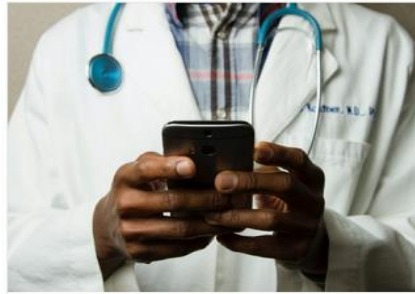
Access and download RLA data through RLA API

Research Link Australia: A driver to improve research information management capability

“Data quality and data latency are essential to the success of RLA.”

“There are crucial data that need to be negotiated and collected from individual data providers.”

Some RLA partner projects start to demonstrate the improvement of their information management capability through contributing data to RLA.



RLA Data Community of Practice Health and Wellbeing

A data-driven approach to enhancing understanding of research-industry collaborations in wellbeing, as part of the...

[Explore >](#)



Sailing the Marine Knowledge Landscape with RLA

To make fishing and aquaculture research and development project details more discoverable, accessible and usable,...

[Explore >](#)



The Lens Global Patent Information for RLA

Connecting patents to researchers and research organisations to drive collaboration and innovation from research to...

[Explore >](#)

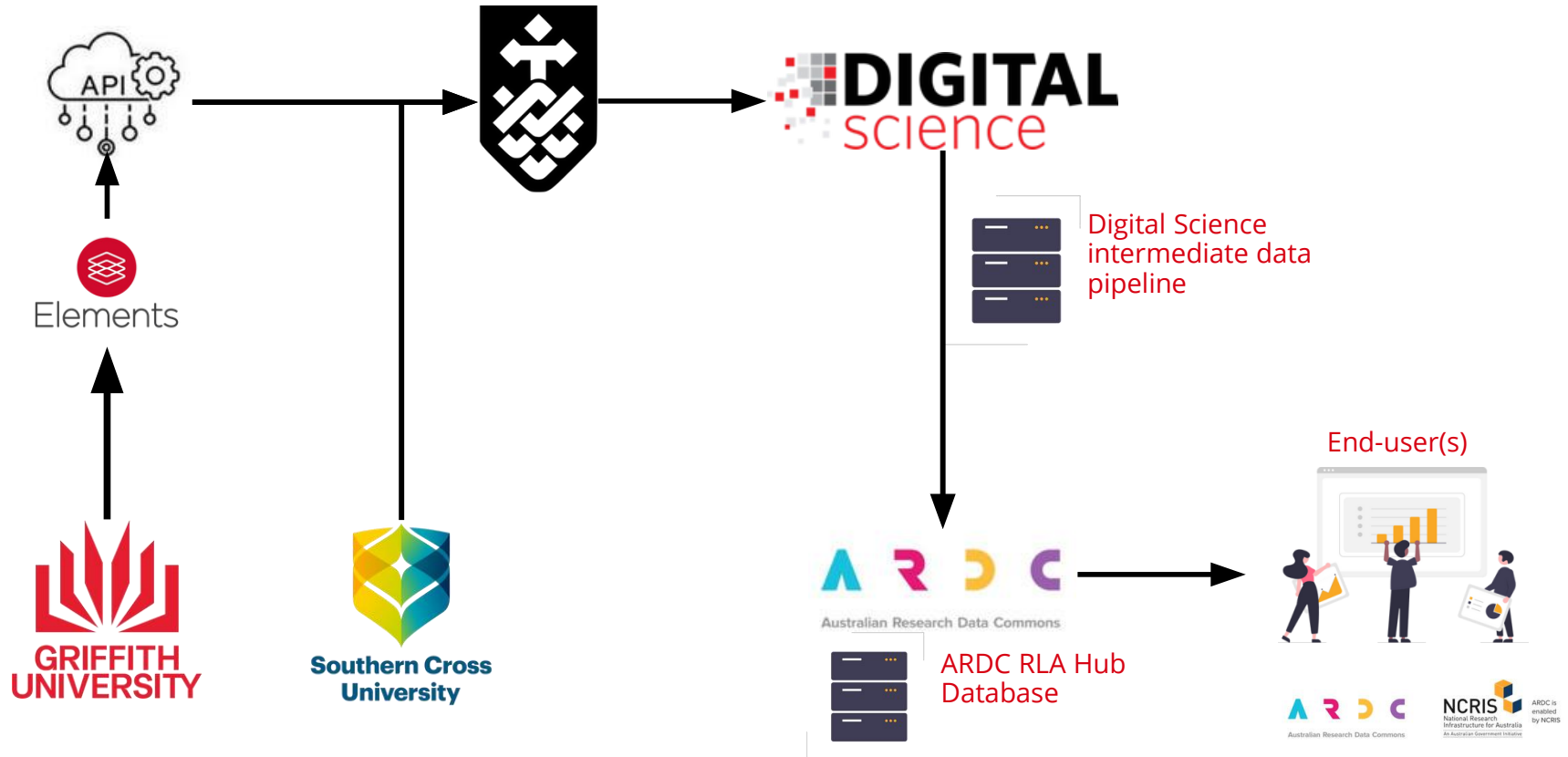


RLA: National Aggregator of University Research Capability Data

Streamlining the collection and sharing of research expertise and capability data from Australian universities, as...

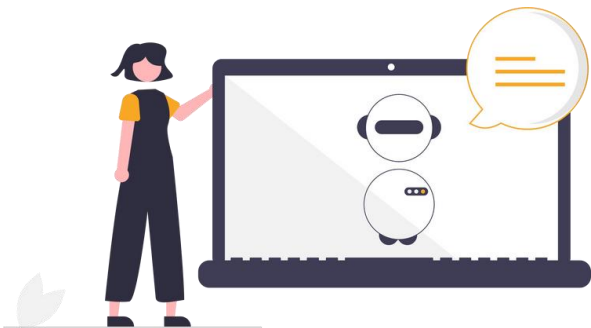
[Explore >](#)

RLA Project



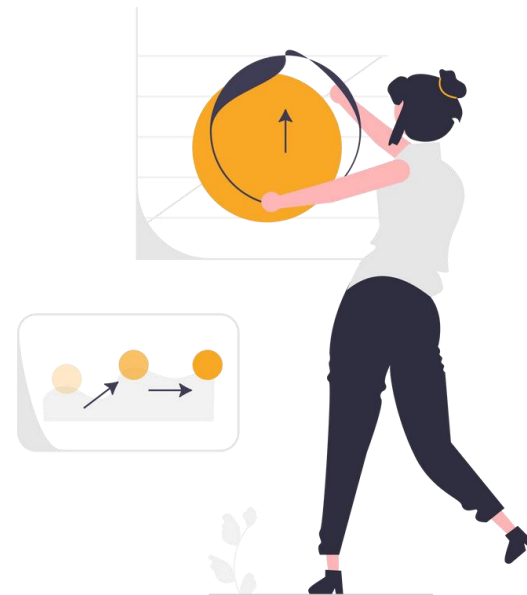
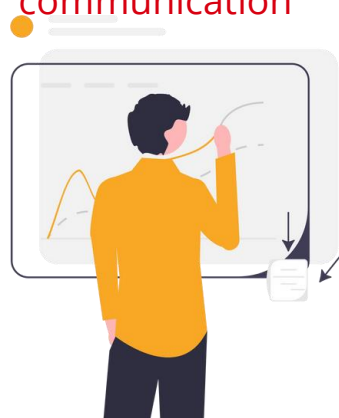
RLA Phase One

Stream Two



Automation technologies

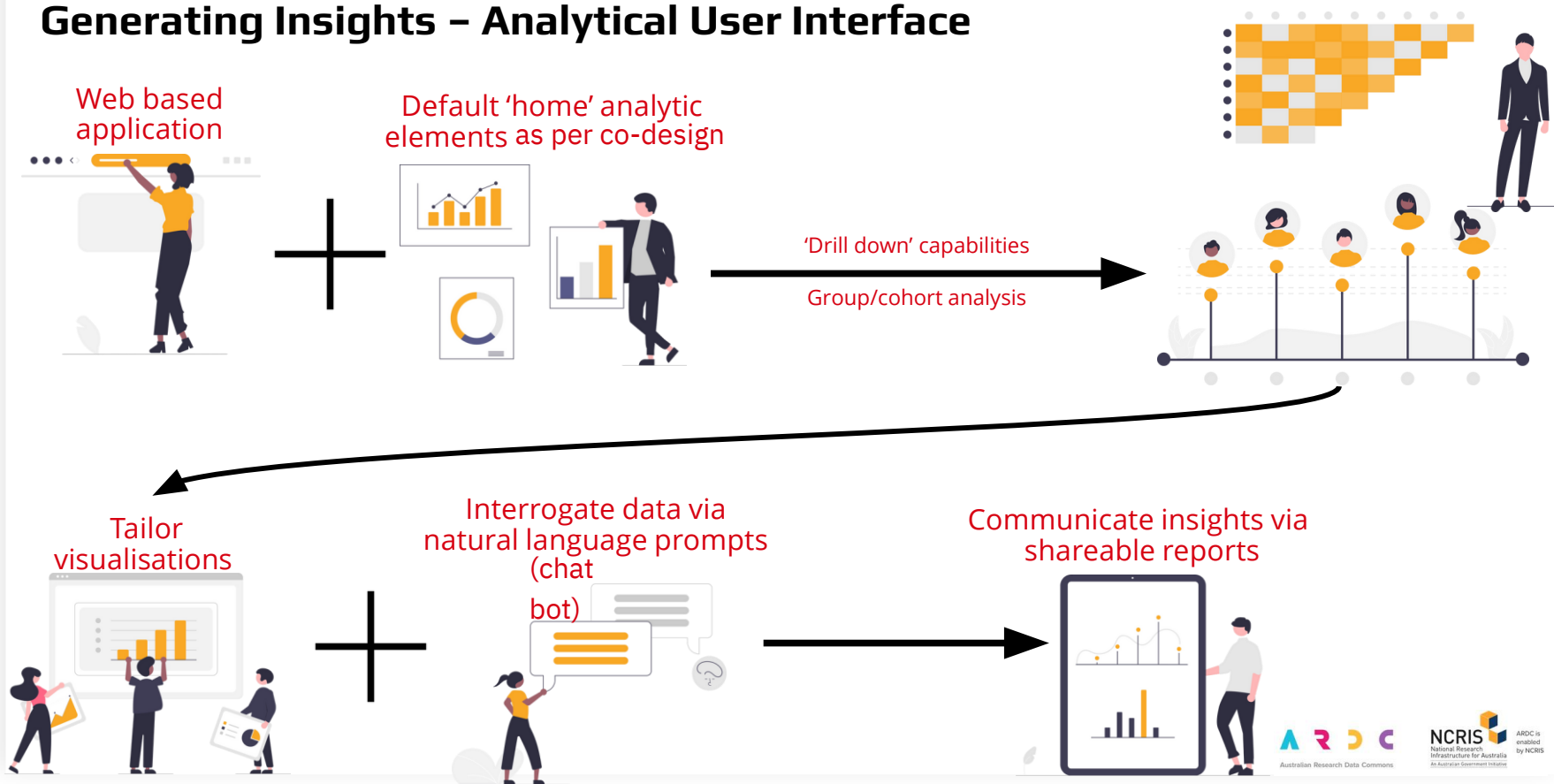
Visualisation for insight communication



Interface co-design

RLA Phase One

Generating Insights – Analytical User Interface



The Benefits of RLA to Data Providers

Increased Visibility and Networking Opportunities.

- Current staff lists ensures enquiries are directed to the appropriate institution.
- Richer and fuller data ensures appropriate representation of an organisation's contribution to achieving national priorities.
- Improved Research Impact visibility.
- Improved Skills and Knowledge Exchange.





Visit Research Link Australia





Subscribe to the
ARDC CONNECT
newsletter

THANK YOU

 ardc.edu.au contact@ardc.edu.au

 [@ARDC_AU](#) Australian-Research-

 Data-Commons [ARDC_AU](#)

