

# Cementing Cultures: Establishing a Framework for the Governance of Indigenous Data in the HASS and Indigenous Research Data Commons

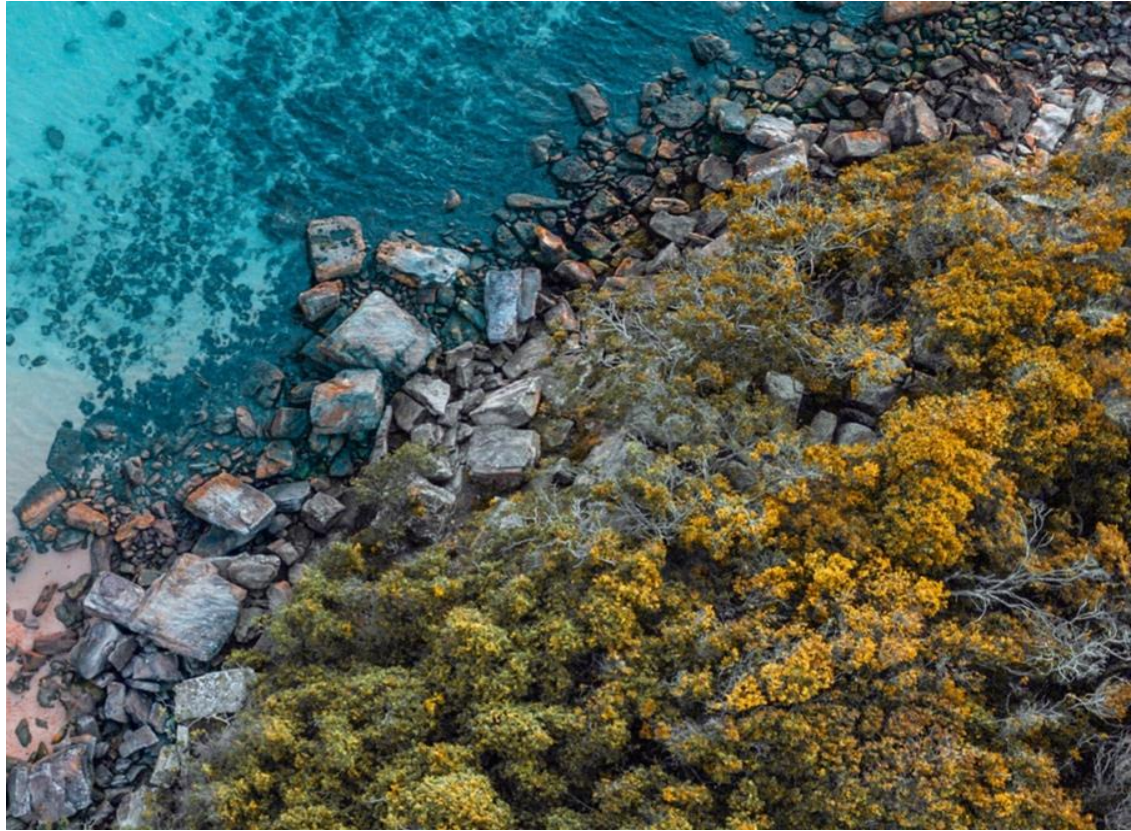
29 October 24

**PRESENTED BY**

Jenny Fewster, Levi Murray, Robert McLellan

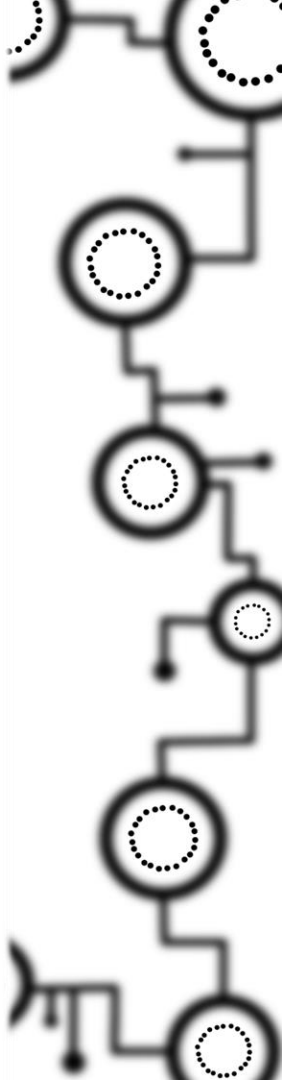
# ACKNOWLEDGEMENT OF COUNTRY

We acknowledge and celebrate the First Australians on whose traditional lands we meet, and we pay our respect to their elders past, present and emerging.



# Overview

- Background to the Framework development
- Purpose
- Aligning the Framework
- Governance of Indigenous Data Framework (model and practices)
- Analysis tool for Implementation



# HUMANITIES, ARTS, SOCIAL SCIENCES (HASS) AND INDIGENOUS RESEARCH DATA COMMONS



Improving Indigenous  
Research Capabilities



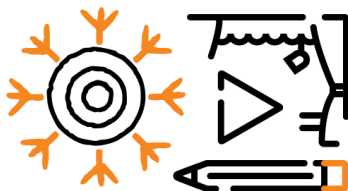
ARDC Community  
Data Lab



Language Data  
Commons of Australia



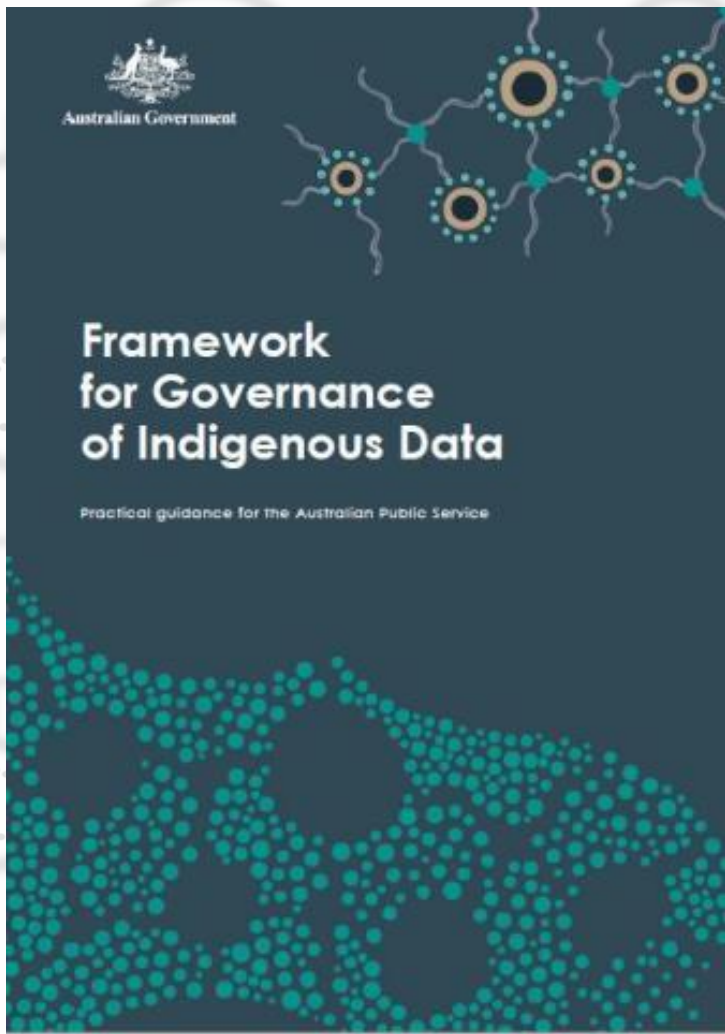
Social Sciences



Australian Creative  
Histories and Futures



Australian Internet  
Observatory



# Aligning the Framework

**Guideline 1:** *Partner with Aboriginal and Torres Strait Islander people.*

**Guideline 2:** *Build data-related capabilities.*

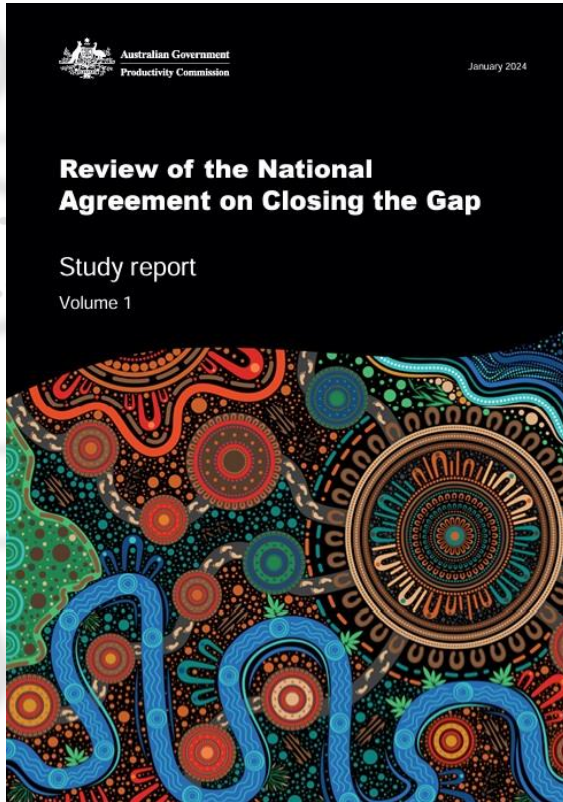
**Guideline 3:** *Provide knowledge of data assets.*

**Guideline 4:** *Build an inclusive data system.*

**Guidelines:** National Indigenous Australians Agency. (n.d.). *Framework for governance of Indigenous data*. Commonwealth of Australia.  
<https://www.niaa.gov.au/resource-centre/framework-governance-indigenous-data>



# ...Continued

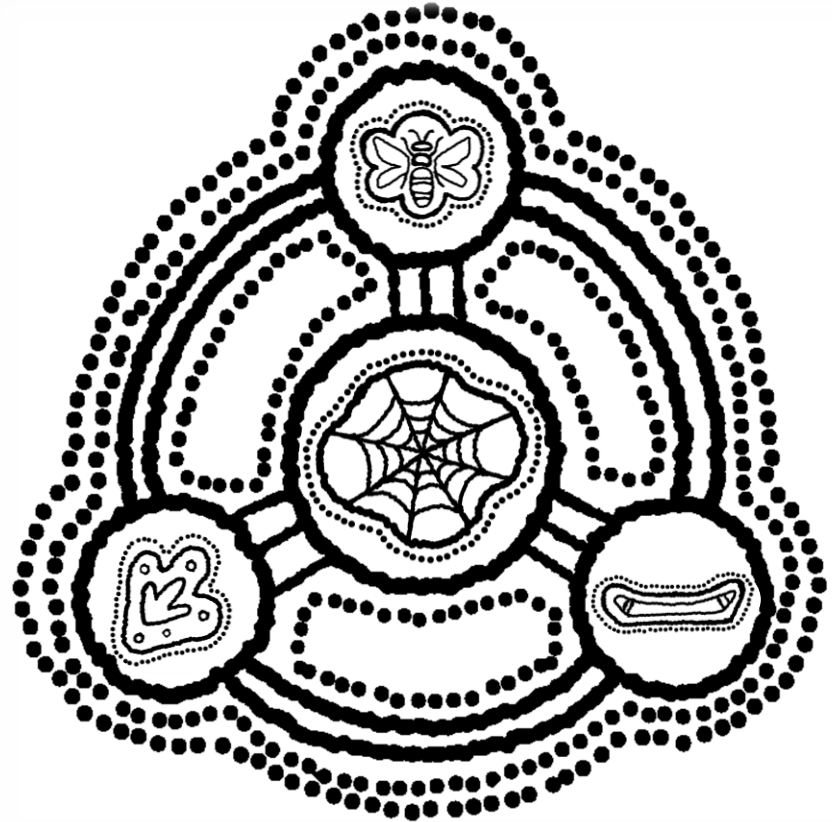


## Recommendation 3

*‘Mainstream government systems and culture need to be fundamentally rethought. Governments have not fully grasped the scale of change required to their systems, culture, operations and ways of working to deliver the unprecedented shift they have committed to in the Agreement. Without this shift, the objective of the Agreement – to overcome the entrenched inequality faced by too many Aboriginal and Torres Strait Islander people so that their life outcomes are equal to all Australians – is unlikely to be achieved.’*

# The Governance Model

1. **Representation:** Partnering with First Nations peoples
2. **Capabilities:** Building and enabling data-related capabilities
3. **Self-Determination:** Providing knowledge, accessibility and usability of data assets
4. **Indigenous Data Ecosystem:** Building an inclusive data ecosystem



# Guideline 1: Partnering with First Nations peoples

## Governance Practice 'examples'

- ✓ **Data Sharing Agreements:** Negotiating clear and transparent data sharing agreements with Indigenous communities that outline how data will be collected, stored, attributed, analysed, and shared, ensuring that Indigenous priorities and concerns are appropriately addressed.
- ✓ **Policy Advocacy:** Advocating for policies and legislation that recognise and respect Indigenous data rights and sovereignty and promote meaningful and empowered Indigenous participation in data governance processes.
- ✓ **Recognition of diversity of community:** Recognising that appropriate community consultation will differ according to data and community involved and may require discussions with diverse groups at an individual, local or wider level.

## Guideline 2: Building and enabling data-related capabilities

### Governance Practice 'examples'

- ✓ **Recognition of Traditional and Indigenous Knowledge:** Recognising and valuing traditional and Indigenous knowledge, knowledge systems and practices related to data collection, management, and interpretation, and integrating this knowledge into data-related training and capacity-building efforts.
- ✓ **Tailored Resources:** Developing and disseminating educational resources, guides, and toolkits specifically designed for Indigenous Australians, taking into account cultural sensitivities and diverse learning styles.
- ✓ **Access to Technology:** Providing and advocating for access to technology and software tools necessary for creating and working with data, such as computers, internet access, data analysis software, and geographic information systems (GIS) software, and data capture devices.



# Guideline 3: Providing knowledge, accessibility and usability of data assets

## Governance Practice 'examples'

- ✓ **Metadata enrichment:** Creating opportunities for community to enrich and enhance metadata. Community-involved enrichment is critical in better describing data. This provides for Indigenous voices, perspectives and worldviews to be embedded in data for, about and by community and to increase findability.
- ✓ **Data activism and access:** Harnessing data and technology to drive social and political change begins with appropriate access to data. Access and responsible dissemination throughout Indigenous communities can strengthen topical awareness and, with the appropriate data, opportunities to overcome self-determined social, political and health challenges.
- ✓ **Data Access Guides:** Producing plain-language guides, finding aids, or brochures that explain how Indigenous Australians can 1) identify and 2) access data relevant to their interests, outlining the steps involved to access and any requirements or restrictions.



# Guideline 4: Building an inclusive data ecosystem

## Governance Practice 'examples'

- ✓ **Policy Development:** Developing policies and guidelines that explicitly recognise the rights of Indigenous Australians to participate in data governance processes and bodies and promote their inclusion and representation.
- ✓ **Transparent Processes:** Implementing transparent and inclusive processes for data governance and decision-making, where information is openly shared, and decisions are made collaboratively with input from Indigenous communities.
- ✓ **Systems and Services:** Consideration for preservation and persistence of data and services, acknowledging this is crucial in building a sustainable and competent ecosystem in the long-term.

# Analysis tool for Implementation

	Immediate Implementation Goals	People oriented challenges	Purpose oriented challenges	Data oriented challenges	Solutions
	Strategy	Risk			Mitigation
<b>Representation:</b> Partner with First Nations peoples	Internal Factors	Internal Factors	Internal Factors	Internal Factors	Internal Factors
	External Factors	External Factors	External Factors	External Factors	External Factors
<b>Capabilities:</b> Build and enable data-related capabilities	Internal	Internal	Internal	Internal	Internal
	External	External	External	External	External
<b>Self-Determination:</b> Provide knowledge, accessibility and usability of data assets	Internal	Internal	Internal	Internal	Internal
	External	External	External	External	External
<b>Indigenous Data Ecosystem:</b> Building an inclusive data ecosystem	Internal	Internal	Internal	Internal	Internal
	External	External	External	External	External

\*What does implementation of the governance practices look like within your organisational context?

\*How will you manage risk and overcome challenges in the interests of executing strategy?



# INTERNATIONAL DATA WEEK

**13-16 October 2025**  
**Brisbane, Australia**



**HOSTED BY**



ARDC is  
enabled  
by NCRIS



**OUR PARTNERS**



[internationaldataweek.org/idw-2025/](https://internationaldataweek.org/idw-2025/)



Subscribe to the  
**ARDC CONNECT**  
newsletter

## THANK YOU



[ardc.edu.au](http://ardc.edu.au)



[contact@ardc.edu.au](mailto:contact@ardc.edu.au)



+61 3 9902 0585



[@ARDC\\_AU](https://twitter.com/ARDC_AU)



[Australian-Research-Data-Commons](https://www.linkedin.com/company/Australian-Research-Data-Commons)