



RISE up for RDM

Natalie Mudd

Research Data Management Coordinator

UniSC



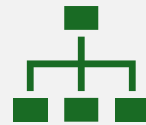
The University of the Sunshine Coast acknowledges the Traditional Custodians of the land on which we live, work and study. We pay our respects to local Indigenous Elders past, present and emerging and recognises the strength, resilience and capacity of all Aboriginal and Torres Strait Islander people.



What is RISE?



Research Infrastructure Self
Evaluation



Structured activity to assess RDM
maturity based on the Digital Curation
Centre's framework



Facilitates internal collaboration and
planning for RDM improvements

Key Outcomes



Assessment of RDM service levels



Identification of gaps and improvement areas

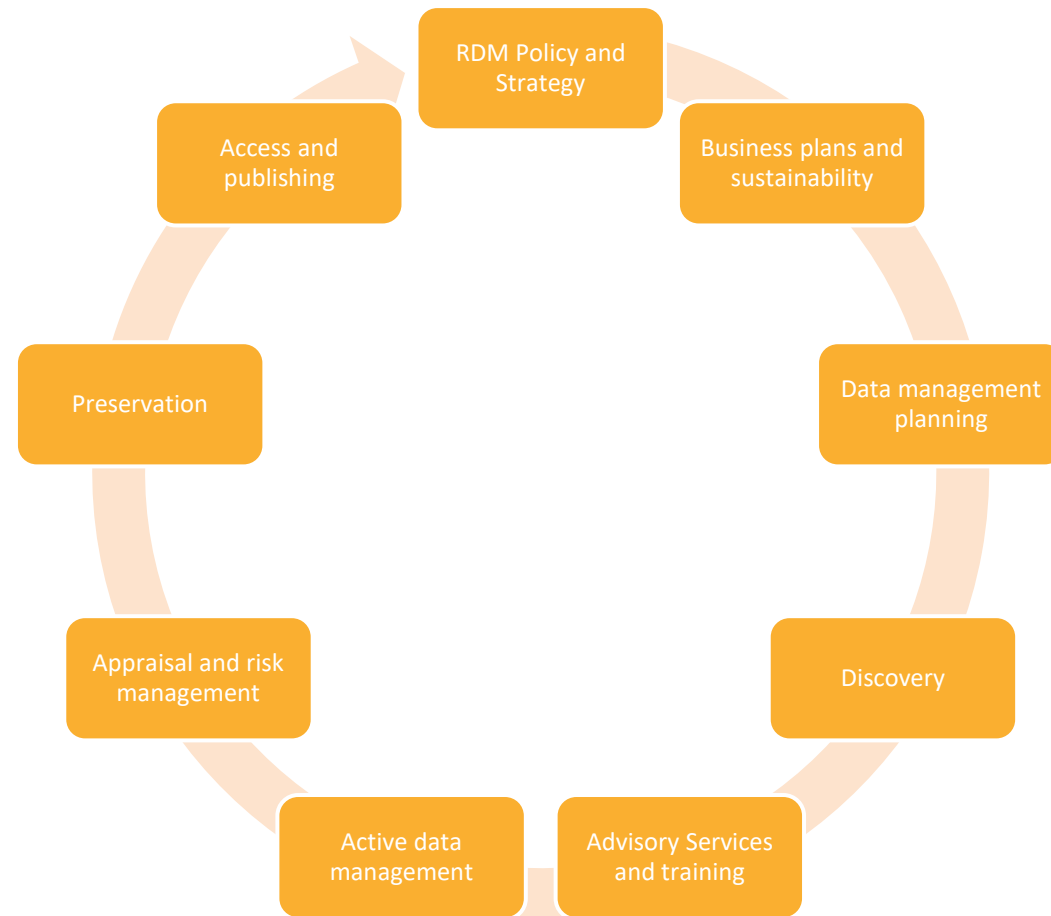


Prioritisation of service development needs



RDM roadmap

Elements



Strategic Motivation and Institutional Needs

Need to Reassess RDM Maturity

A major project introduced changes requiring a reassessment of research data management maturity at UniSC.

Implementation Challenges and Priorities

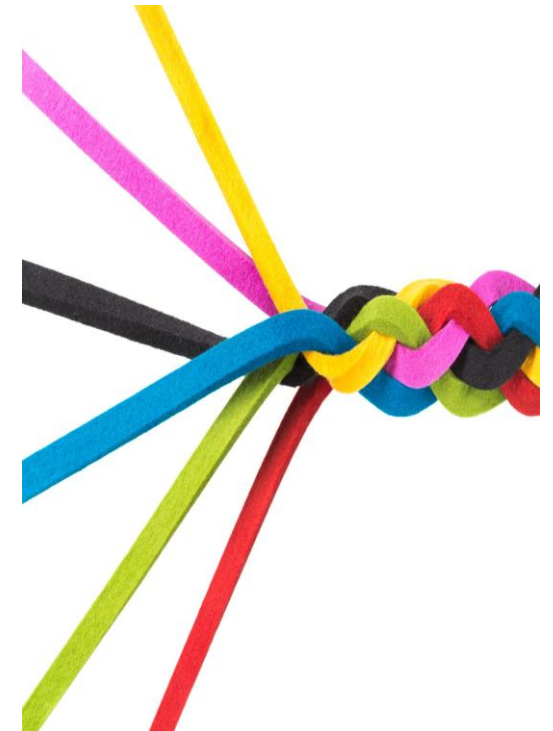
Changes to storage options and RDM Plans posed challenges needing solutions and stakeholder engagement.

RISE Workshops as Solution

RISE workshops provided toolkits to unite stakeholders, evaluate practices, and set goals for RDM improvement.

Commitment to Enhancing Services

RISE workshops helped restart RDM conversations and showed UniSC's dedication to improving research data services.



Lessons Learned and Suggestions

Challenges in Grouping by Expertise

Grouping attendees by expertise created knowledge gaps and limited comprehensive understanding.

Need for Comprehensive Workshop

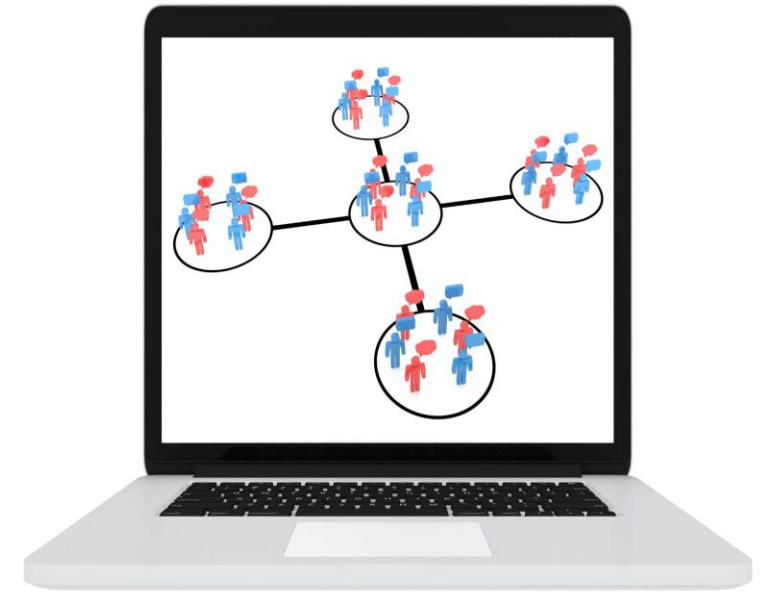
A single, inclusive workshop could promote broader understanding and better collaboration among participants.

FAIR and CARE Principles

Inclusion of FAIR and CARE principles should be implemented as part of the assessment.

Future Workshop Enhancements

Future workshops create networking opportunities to strengthen connections.



nmudd@usc.edu.au

