

# Streamlining Climate Model Documentation

For The Australian Research Community


Jasmeen Kaur, Paige Martin, Davide Marchegiani, Felicity Chun,  
Heidi Nettelbeck



# Motivation

**1** **Technical documentation** is essential for computational researchers. It serves as the **bridge between tools and people** using those tools.



**2**  To streamline information that is often **scattered** across multiple resources and websites.

**3** In climate modelling, it is common to have **huge codebases** with **lots of software dependencies**.



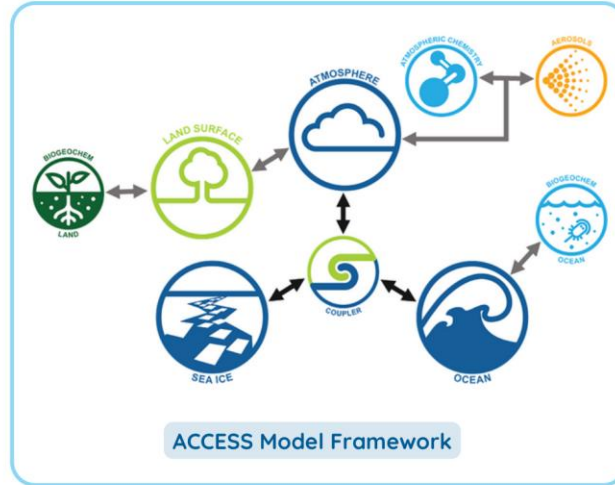
# What is ACCESS-NRI?

National Research  
Infrastructure

ACCESS-NRI

The Australian Community Climate  
and Earth System Simulator

ACCESS is a model framework made up  
of different model codebases, each  
representing part of the Earth.



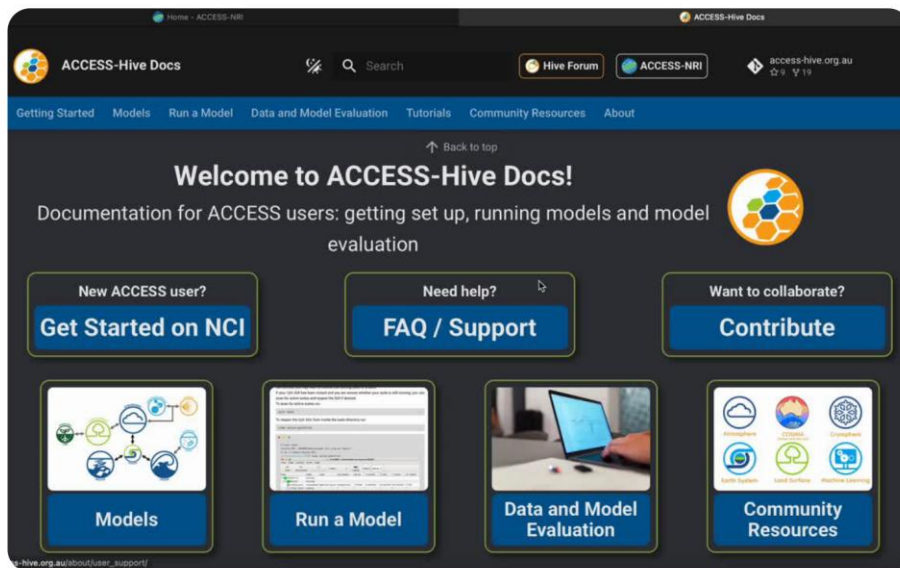


# What is ACCESS-Hive Docs?

**ACCESS-Hive Docs** is a unified documentation platform tailored to the ACCESS research community.

It brings together information on:

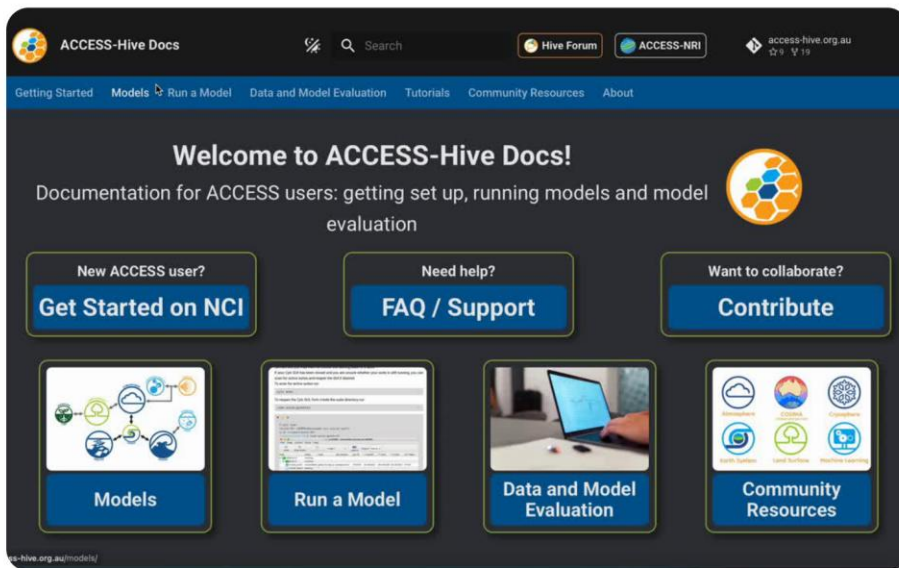
1. **Model Components**
2. **Model Configurations**
3. **How to Run a Model on NCI**
4. **Data and Model Evaluation**
5. And more!



1. Motivation -> 2. ACCESS-NRI -> 3. **ACCESS-Hive Docs** -> 4. Organisation of Hive Docs -> 5. Improvements -> 6. Wrap-up



# Why do we need Hive Docs?

With several different models under the ACCESS framework, **documentation** for each model either **hardly existed** at all, often in their **own locations** and wasn't always up to date.

Hence, ACCESS-Hive Docs provides a **single location** with information about all **ACCESS models**.



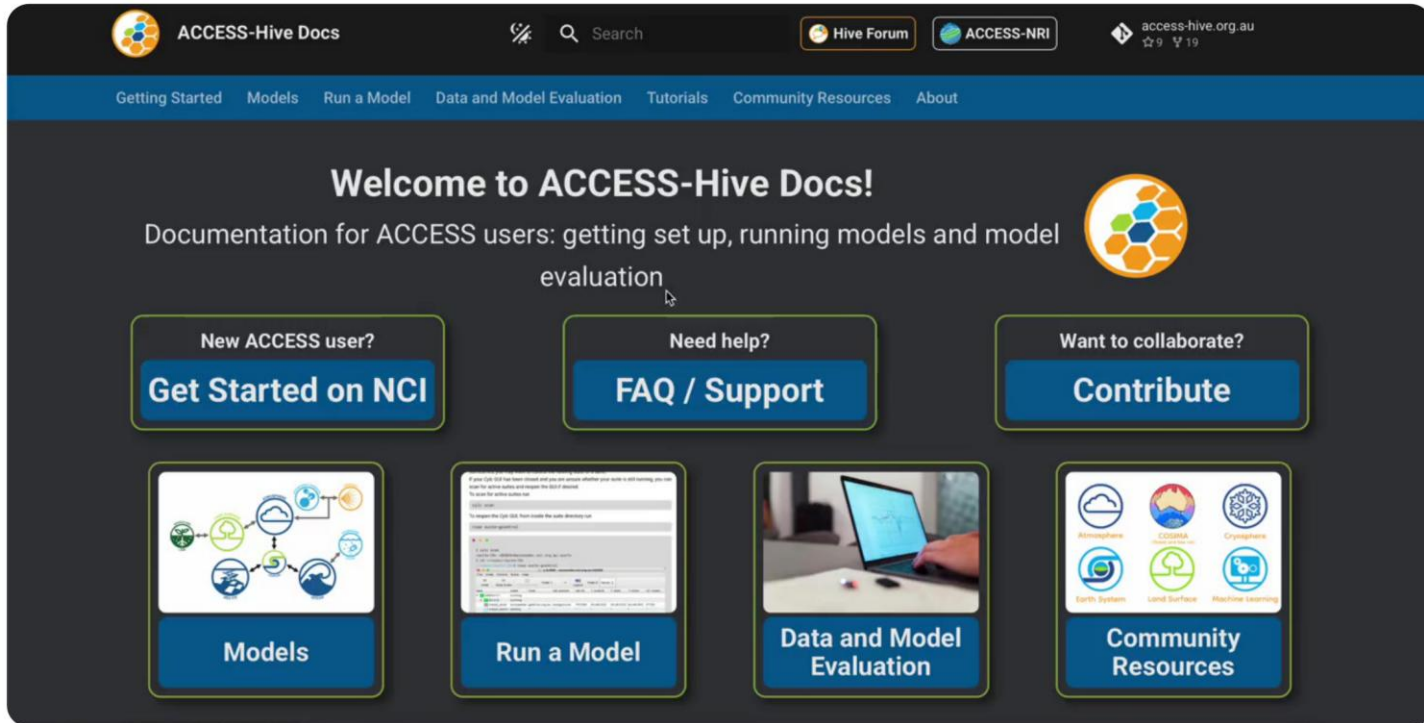
1. Motivation -> 2. ACCESS-NRI -> 3. ACCESS-Hive Docs -> 4. Organisation of Hive Docs -> 5. Improvements -> 6. Wrap-up

ACCESS-Hive Docs





# How is it organised?



The screenshot shows the ACCESS-Hive Docs website interface. At the top, there is a navigation bar with the ACCESS-Hive Docs logo, a search bar, and links to the Hive Forum, ACCESS-NRI, and the website URL (access-hive.org.au). Below the navigation bar is a main header with the text "Welcome to ACCESS-Hive Docs!" and "Documentation for ACCESS users: getting set up, running models and model evaluation". The main content area features several interactive buttons and cards: "New ACCESS user? Get Started on NCI", "Need help? FAQ / Support", "Want to collaborate? Contribute", "Models" (with a diagram of interconnected nodes), "Run a Model" (with a code editor screenshot), "Data and Model Evaluation" (with a laptop image), and "Community Resources" (with icons for Atmosphere, COSMA, Cryosphere, Earth System, Land Surface, and Machine Learning).

ACCESS-Hive Docs



# Improvements

- 1 Keeping the documentation up-to-date with latest releases.
- 2 Catering for both new and advanced users.
- 3 Trade off between providing polished content vs quick community contributions.



ACCESS-Hive Docs



[docs.access-hive.org.au](https://docs.access-hive.org.au)

1. Motivation -> 2. ACCESS-NRI -> 3. ACCESS-Hive Docs -> 4. Organisation of Hive Docs -> **5. Improvements** -> 6. Wrap-up



# Wrap up!

ACCESS-Hive Forum



[forum.access-hive.org.au](https://forum.access-hive.org.au)

Join discussions & ask questions  
on  
**ACCESS-Hive Community Forum!**



1. Motivation -> 2. ACCESS-NRI -> 3. ACCESS-Hive Docs -> 4. Organisation of Hive Docs -> 5. Improvements -> 6. **Wrap-up**

Video Credit: Owen Kaluza (ACCESS-NRI)

ACCESS-Hive Docs



[docs.access-hive.org.au](https://docs.access-hive.org.au)